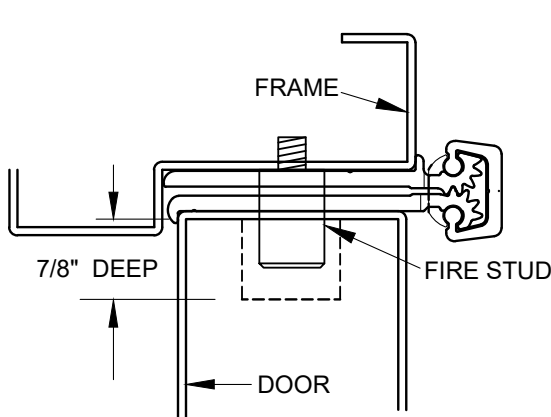


# UL FIRE RATED STUDS FOR INSTALLATION FULL CONCEALED ALUMINUM GEARED HINGES

MODELS A120HD

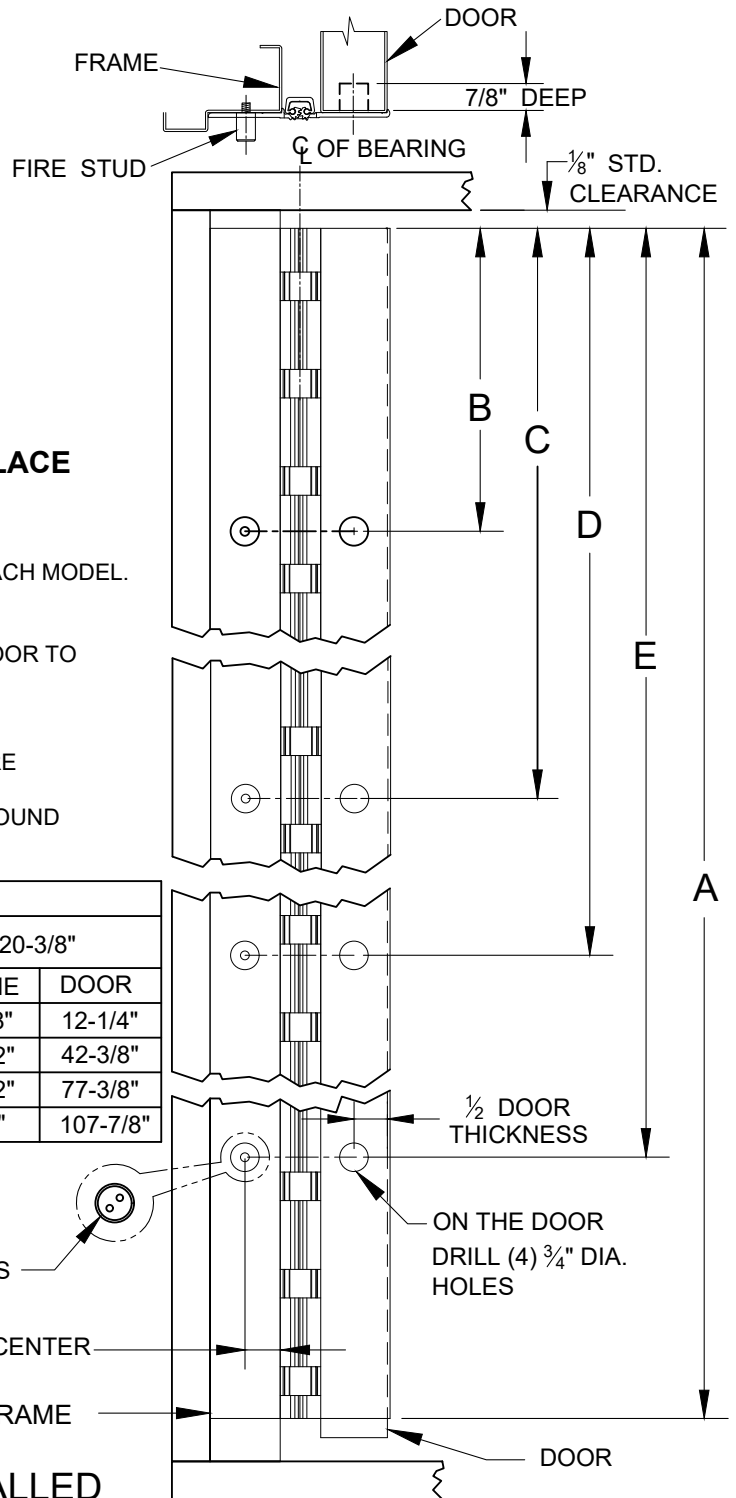


**DOOR SHOWN CLOSED WITH FIRE STUD IN PLACE**

**NOTES:**

1. INSTALL HINGE PER INSTALLATION INSTRUCTIONS FOR EACH MODEL.
2. FOR THE FRAME SIDE - DRILL AND TAP (4) 12-24 HOLES FOR FIRE STUDS.
3. FOR THE DOOR SIDE - DRILL (4) 3/4" DIA. HOLES IN THE DOOR TO CORRESPOND TO THE STUD HOLES IN THE FRAME SIDE.
4. INSERT STUDS IN THE FOUR (4) TAPPED FRAME HOLES, TIGHTEN SECURELY.
5. SLOWLY CLOSE DOOR MAKING SURE THAT THE STUDS ARE PROPERLY ALIGNED.
6. MINOR INTERFERENCE CAN BE TAKEN CARE OF WITH A ROUND METAL FILE.

DIMENSION						
"A" HINGE LENGTH	83-3/8"		95-3/8"		120-3/8"	
	FRAME	DOOR	FRAME	DOOR	FRAME	DOOR
"B"	12-3/8"	12-1/4"	12-3/8"	12-1/4"	12-3/8"	12-1/4"
"C"	32"	31-7/8"	32-1/4"	32-3/8"	42-1/2"	42-3/8"
"D"	51-3/8"	51-1/4"	63"	62-7/8"	77-1/2"	77-3/8"
"E"	71"	70-7/8"	83"	82-7/8"	108"	107-7/8"



**DOOR SHOWN OPEN 180°**

ON THE FRAME, DRILL AND TAP (4) 12-24 HOLES

1/2 THE DOOR THICKNESS + 1/32" FROM CENTER OF HOLE TO EDGE OF FRAME

1/2 DOOR THICKNESS

ON THE DOOR DRILL (4) 3/4" DIA. HOLES

**ALL FOUR (4) STUDS MUST BE INSTALLED TO COMPLY WITH U.L. RATING**



www.abhmfg.com  
E-mail: abhinfo@abhmfg.com  
Architectural Builders Hardware Mfg., Inc.  
1222 Ardmore Ave., Itasca, IL 60143  
630.875.9900; FAX 800.9FAXABH (932.9224)

© 2022 ABH Mfg., Inc.  
printed in USA

FIRE STUD - A120HD-00.DWG

**FIRE STUD - A120HD**

PAGE 1 OF 1  
REVISED 09-14-22