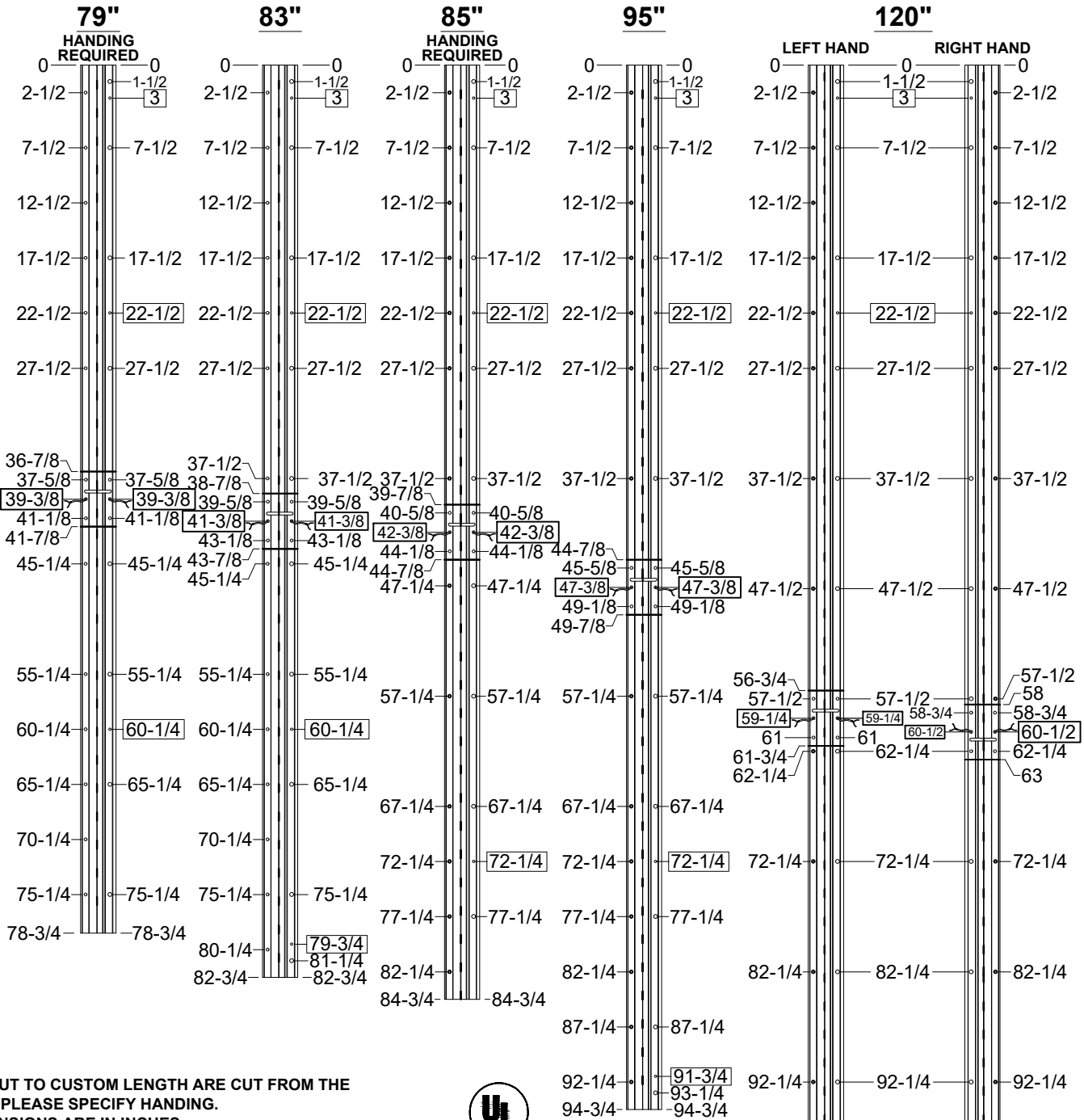


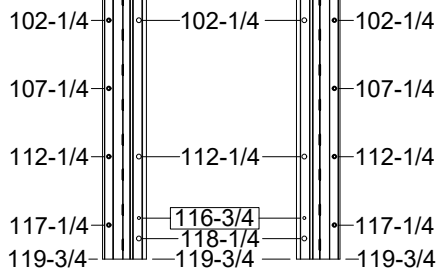
**A570HD - "R" REMOVABLE OPTION, FOR ELECTRICAL MODIFICATION  
NARROW FRAME LEAF, 1/16 INSET, FULL SURFACE**



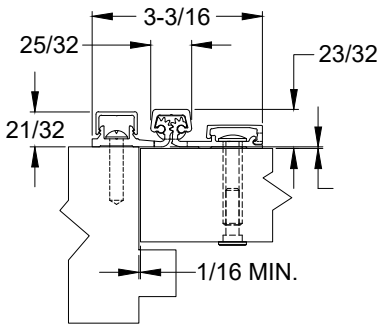
- NOTES:**  
 1. HINGES CUT TO CUSTOM LENGTH ARE CUT FROM THE BOTTOM. PLEASE SPECIFY HANDING.  
 2. ALL DIMENSIONS ARE IN INCHES.  
 3. ALL DIMENSIONS ARE TO CENTERLINE OF HOLES.  
 4. "XX" DENOTES LOCATOR HOLE.



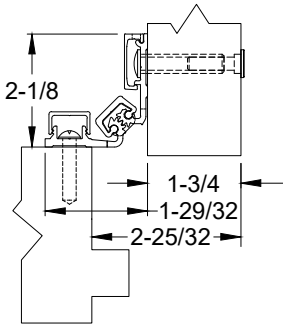
STANDARD HINGE SIZES & SCREW DETAIL					
NOMINAL DOOR HEIGHT	6'8"	7'0"	7'2"	8'0"	10'0"
ACTUAL HINGE LENGTH	79"	83"	85"	95"	120"
FRAME	12-24 x 1" PHILLIPS PAN HEAD, SELF DRILLING, THREAD FORMING TEK MACHINE SCREW				
	14	16	15	16	19
DOOR	12-24 x 1" PHILLIPS PAN HEAD, SELF DRILLING, THREAD FORMING TEK MACHINE SCREW				
	1/4-20 x 1-1/4" x 3/8 DIA. SEX BOLT & 1/4-20 x 1-1/4" PH. HEAD SHOULDER SCREW				
	8	10	9	10	13
	12-24 x 1" PH. PN. HD. SELF DRILLING TEK SCREW (LOCATOR HOLE)				
	3	4	3	4	4



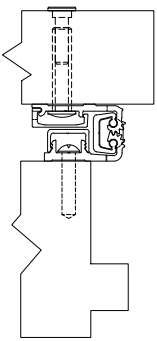
**A570HD - "R" REMOVABLE OPTION, FOR ELECTRICAL MODIFICATION  
NARROW FRAME LEAF, 1/16 INSET, FULL SURFACE**



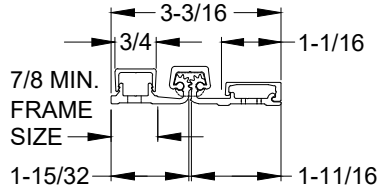
**CLOSED POSITION**



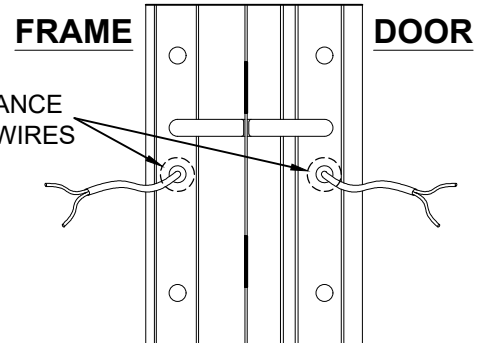
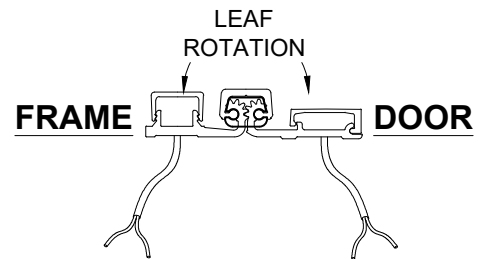
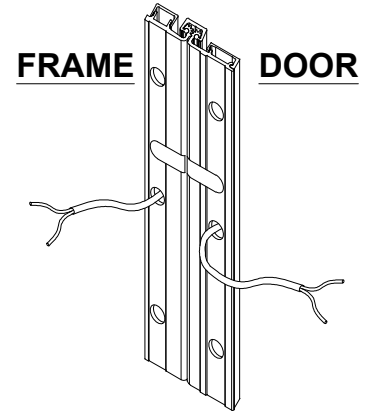
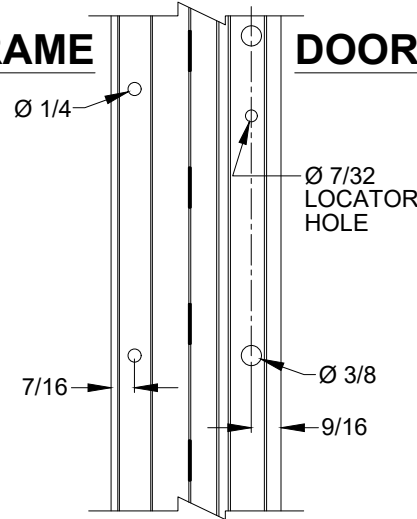
**90° OPENING**



**180° OPENING**



**FRAME DOOR**



**WIRE TRANSFER VIEW**

**SPECIFICATION:**

**DESCRIPTION:** SINGLE CONDUCTOR #22 AWG MINIATURE HOOK-UP WIRE FOR APPLICATIONS REQUIRING EXTREME FLEXIBILITY.

**CONDUCTOR:** #22 AWG 168/44 (0.002") SOFT BARE COPPER LHL.

**INSULATION:** PROPRIETARY FORMULATION PVC 0.010" NOM. WALL MEETS VW-1 FLAME REQUIREMENT.

**DIAMETER:** 0.053" ± 0.003".

**RESISTANCE:** 16.7 OHMS MAX. @ 20°C, PER 1000 FT.

**VOLTAGE RATING:** 600 VOLTS RMS, DEPENDING ON SPECIFICATION.

**AVAILABLE AS RoHS COMPLIANT.**

A570-R OPTION, FOR ELECTRICAL MODIFICATION-2-00.DWG