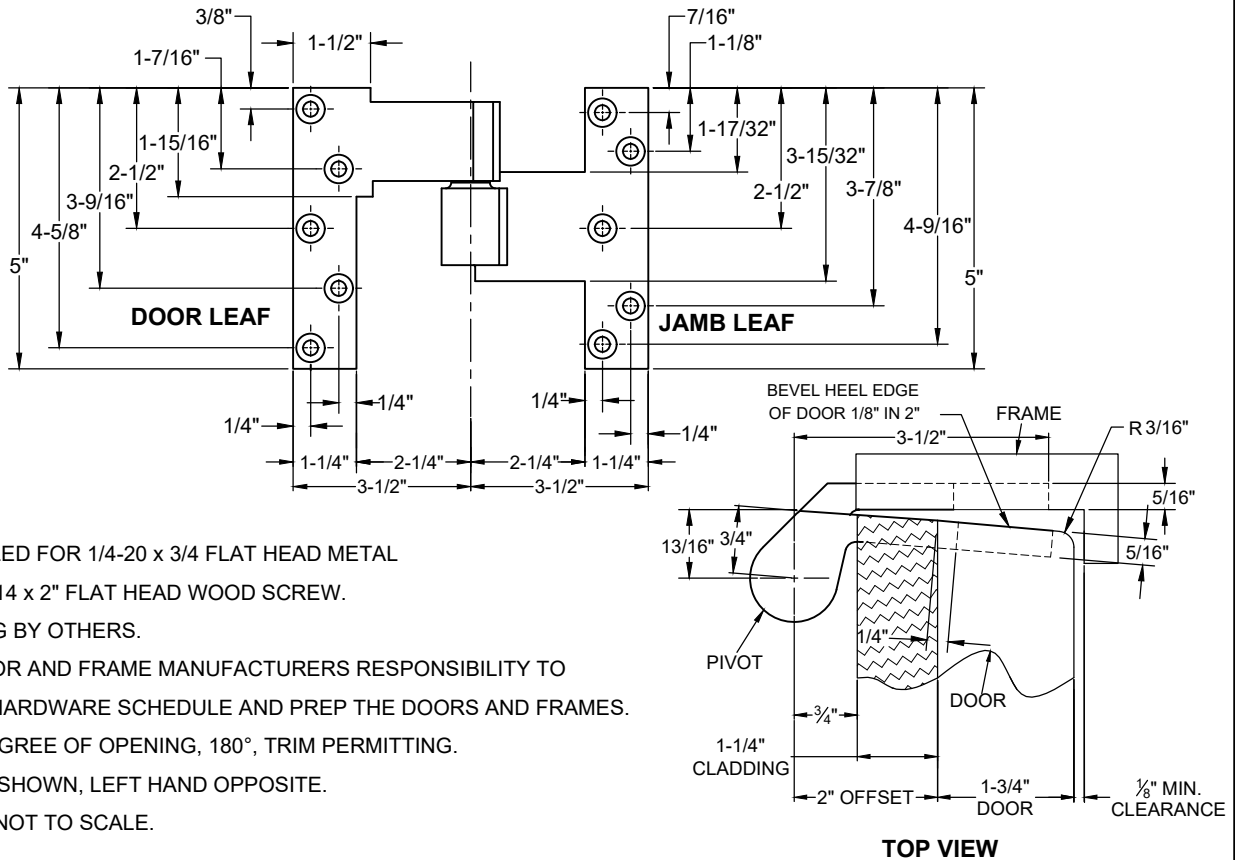


# CUSTOM L019 INTERMEDIATE PIVOT, HANDED

(1-3/4" THICK DOOR & 1-1/4" CLADDING)  
THIS TEMPLATE TO BE USED WITH SP-6461



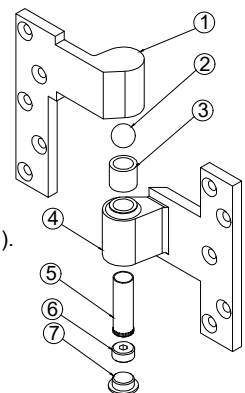
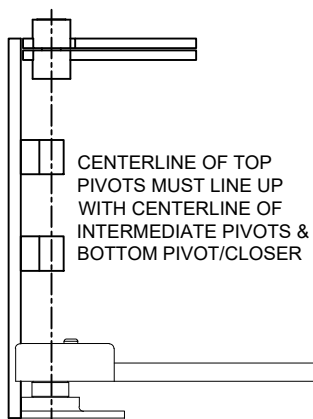
**NOTES:**

1. PIVOTS DRILLED FOR 1/4-20 x 3/4 FLAT HEAD METAL SCREW OR #14 x 2" FLAT HEAD WOOD SCREW.
2. REINFORCING BY OTHERS.
3. IT IS THE DOOR AND FRAME MANUFACTURERS RESPONSIBILITY TO CHECK THE HARDWARE SCHEDULE AND PREP THE DOORS AND FRAMES.
4. MAXIMUM DEGREE OF OPENING, 180°, TRIM PERMITTING.
5. RIGHT HAND SHOWN, LEFT HAND OPPOSITE.
6. DRAWING IS NOT TO SCALE.

## INSTALLATION INSTRUCTIONS

NOTE: DOOR SHOULD ALREADY BE HUNG WITH TOP PIVOT AND BOTTOM PIVOT (OR FLOOR CLOSER).

1. MORTISE DOOR & FRAME PER TEMPLATE ABOVE.
2. INSTALL L019 DOOR & FRAME PIVOT LEAVES.
3. ALIGN PIVOT POINT FROM TOP PIVOT TO BOTTOM ARM (SEE DRAWING).
4. REMOVE 019 END CAP.
5. TURN 019 RETAINER SCREW CLOCKWISE TO RAISE THE DOOR OR COUNTERCLOCKWISE TO LOWER DOOR UNTIL YOU REACH THE DESIRED HEIGHT.
6. TURN 019 RETAINER SCREW .
7. TIGHTEN 019 RETAINER SCREW UNTIL YOU FEEL RESISTENCE.
8. REPLACE 019 END CAP.



ITEM NO.	QTY.	PART NO.
1	1	L019 Door Leaf
2	1	019 Alignment Ball
3	1	019 Needle Bearing
4	1	L019 Jamb Leaf
5	1	019 Pivot Pin
6	1	019 Retainer Screw
7	1	019 End Cap



www.abhmfg.com  
E-mail: abhinfo@abhmfg.com  
Architectural Builders Hardware Mfg., Inc.  
1222 Ardmore Ave., Itasca, IL 60143  
630.875.9900; FAX 800.9FAXABH (932.9224)

© 2021 ABH Mfg., Inc.  
printed in USA

SP-6461-1

ISSUED 06-22-21

SP-6461.DWG