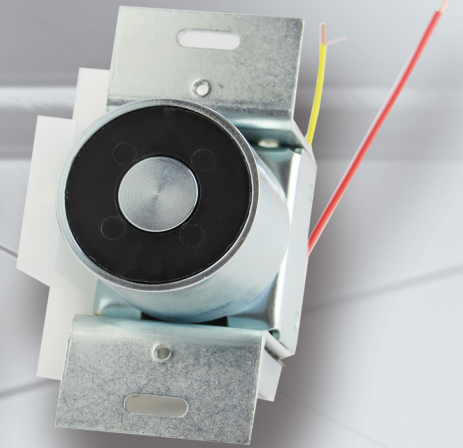
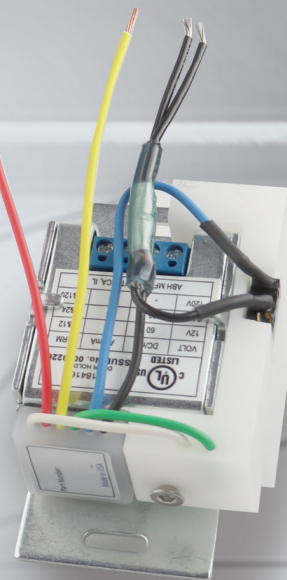


Electromagnetic Door Holder with Timer

2100T/2300T/2600T

Designed to temporarily hold doors open for storage rooms, areas with heavy cart traffic or to facilitate the movement of wheelchairs or beds.

Activation Button



Standard Features

- Built in timer, preset to hold doors open for 3 minutes from the time of activation.
- Activation is achieved by depressing the built-in activation push button
- Tri-Voltage Units for easy installation 12V DC, 24 AC/DC or 120V AC
- Provided with one complimentary 1" extension-**No Charge**
- 35 lbs. - 40 lbs. holding force
- Armature features two pivot points which each have 360° mobility to help door alignment and reduce residual magnetism
- Available for the 2100 Recess Wall Mounted, 2300 Surface Wall Mounted and 2600 Floor Mounted Series Electro-Magnetic Door Holders.
- Finishes: US28 (Standard), S1, S2, S3, S4, S5, US32D, US32