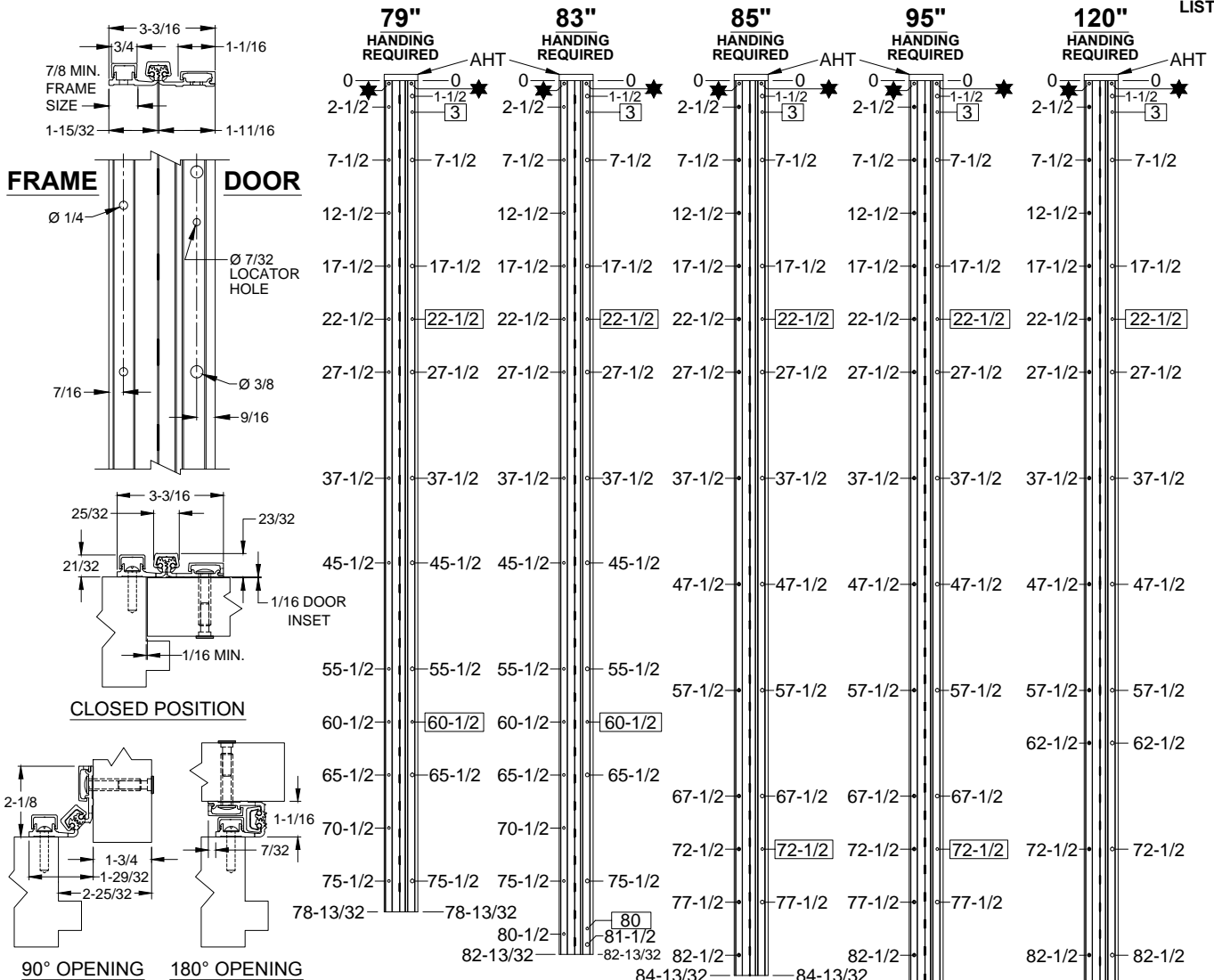


A570 - "AHT" OPTION, ADVANCED HOSPITAL TIP, ALUMINUM GEARED HINGE, NARROW FRAME LEAF, 1/16 INSET, FULL SURFACE

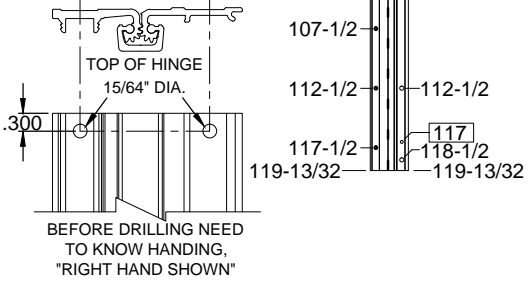


- NOTES:**
- HINGES CUT TO CUSTOM LENGTH ARE CUT FROM THE BOTTOM. PLEASE SPECIFY HANDING.
 - ALL DIMENSIONS ARE IN INCHES.
 - ALL DIMENSIONS ARE TO CENTERLINE OF HOLES.
 - XX DENOTES LOCATOR HOLE.
- ★ = ADVANCED HOSPITAL TIP (AHT), AT THE TOP OF THE HINGE PER HANDING. MANUFACTURING TO ADD (2) .234 (15/64") DIA. THRU HOLES FOR #12 SCREWS CENTERED BETWEEN THE HINGE LEAF CAP SLOT. SEE INSTALLATION PAGE 2.

"AHT" OPTION SEE PAGE 2 FOR COMPLETE DETAILS

STANDARD HINGE SIZES & SCREW DETAIL

NOMINAL DOOR HEIGHT	6'8"	7'0"	7'2"	8'0"	10'0"	
ACTUAL HINGE LENGTH	79"	83"	85"	95"	120"	
FRAME	12-24 x 7/8" PHILLIPS PAN HEAD, SELF DRILLING, THREAD FORMING TEK MACHINE SCREW	13	14	13	15	18
	12-24 x 7/8" TORX FLAT HEAD UNDERCUT, SELF DRILLING, THREAD FORMING TEK MACHINE SCREW (AHT OPTION MOUNTING)	2	2	2	2	2
DOOR	1/4-20 x 1-11/16" x 3/8 DIA. SEX BOLT & 1/4-20 x 1-1/8" PH. HEAD SHOULDER SCREW	9	10	9	11	14
	12-24 x 7/8" PH. PN. HD. SELF DRILLING TEK SCREW (LOCATOR HOLE)	3	4	3	4	4
	#12 x 1-1/2" TORX FLAT HEAD UNDERCUT SHEET METAL SCREW (AHT OPTION MOUNTING)	2	2	2	2	2



www.abhmf.com
 E-mail: abhinfo@abhmf.com
 Architectural Builders Hardware Mfg., Inc.
 1222 Ardmore Ave., Itasca, IL 60143
 630.875.9900; FAX 800.9FAXABH (932.9224)

A570-AHT OPTION, ADVANCED HOSPITAL TIP-01.DWG

A570 - "AHT" OPTION
 ADVANCED HOSPITAL TIP

© 2020 ABH Mfg., Inc.
 printed in USA

PAGE 1 OF 2
 ISSUED 01-31-20

A570 - "AHT" OPTION, ADVANCED HOSPITAL TIP, ALUMINUM GEARED HINGE,
NARROW FRAME LEAF, 1/16 INSET, FULL SURFACE

A570 AHT (ADVANCED HOSPITAL TIP) INSTALLATION INSTRUCTIONS

1. INSTALL TOP OF HINGE 19/32" FROM THE TOP OF THE DOOR
2. BEFORE INSTALLING DOOR AND FRAME LEAF COVERS, FASTEN DOOR AND FRAME SIDE HOSPITAL TIP SECTIONS
3. **INSTALL DOOR SIDE AHT SECTION**
 - a. SLIDE AHT SECTION INTO SLOT ON HINGE LEAF, THIS WILL LINE UP WITH THE PREDRILLED HINGE LEAF THRU-HOLE
 - b. FOR METAL DOORS, MARK HOLE LOCATION, THEN DRILL AND FASTEN THE AHT SECTION USING PROVIDED 12-24 X 7/8" TORX FLAT HEAD, UNDERCUT, SELF-DRILLING, THREAD FORMING TEK MACHINE SCREW
 - c. FOR WOOD DOORS, MARK HOLE LOCATION AND DRILL 3/16" PILOT HOLE, FASTEN AHT SECTION USING PROVIDED #12 X 1-1/2" TORX FLAT HEAD, UNDERCUT WOOD SCREW
4. **INSTALL FRAME SIDE AHT SECTION**
 - a. SLIDE AHT SECTION INTO SLOT ON HINGE LEAF, THIS WILL LINE UP WITH THE PREDRILLED HINGE LEAF THRU-HOLE
 - b. FOR METAL FRAMES, MARK HOLE LOCATION, THEN DRILL AND FASTEN THE AHT SECTION USING PROVIDED 12-24 X 7/8" TORX FLAT HEAD, UNDERCUT, SELF-DRILLING, THREAD FORMING TEK MACHINE SCREW
 - c. FOR WOOD FRAMES, MARK HOLE LOCATION AND DRILL 3/16" PILOT HOLE, FASTEN AHT SECTION USING PROVIDED #12 X 1-1/2" TORX FLAT HEAD, UNDERCUT WOOD SCREW
5. BEFORE TIGHTENING THE SCREWS DOWN COMPLETELY, DOOR AND FRAME AHT SECTIONS SHOULD BE FLUSH WITH THE TOP OF THE DOOR.
6. INSTALL DOOR AND FRAME LEAF COVERS

