

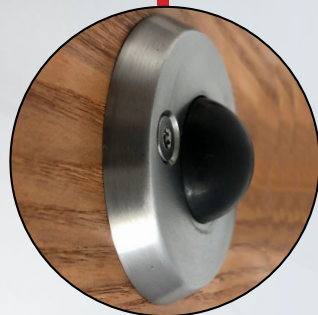
# 1841, 1842, 1843

Heavy Duty Ligature Resistant wall stop, to be used in behavioral health areas and facilities, designed to protect walls from excessive force and prevent patients from causing self harm.

**1841**



Front View



Side View

**Standard Features**

- Wall Plate supplied with chamfered edges to prevent ligature attachment
- Material - High Density Rubber Stop; 304 Stainless Steel Plate
- Stainless Steel - Other finishes by request
- "SEC" Security fasteners provided standard
- Sloped to eliminate ligature points

**Specifications**

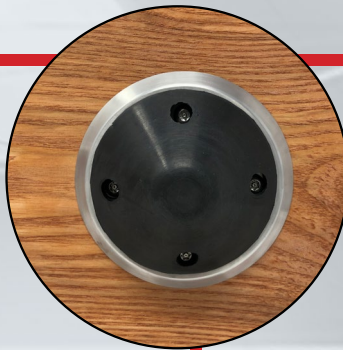
- Low Projection - 1" projection from face of wall
- 2-1/2" Diameter Plate

**Standard Finishes**

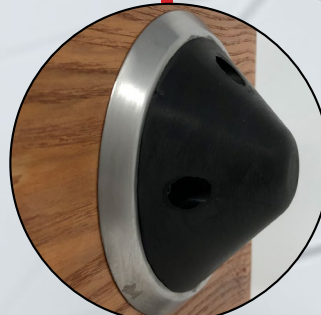
- US3 - Bright Brass
- US4 - Satin Brass
- US10 - Satin Bronze
- US10B - Satin Dark Bronze
- US32 - Bright Stainless
- US32D - Satin Stainless Steel



**1842**



Front View



Side View

**Standard Features**

- Wall Plate supplied with chamfered edges to prevent ligature attachment
- Material - High Density Rubber Stop; 304 Stainless Steel Plate
- "SEC" Security fasteners provided standard
- Solid Rubber for durability
- Sloped to eliminate ligature points

**Specifications**

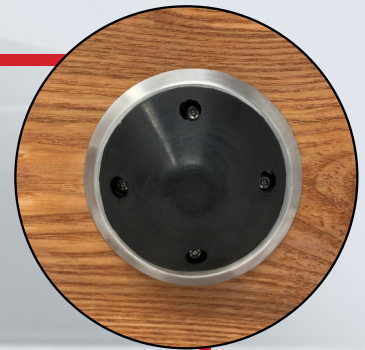
- Projection - 1 3/4" projection from face of wall
- 3-5/8" Diameter Plate

**Standard Finishes**

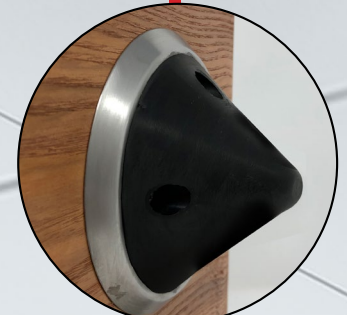
- US3 - Bright Brass
- US4 - Satin Brass
- US10 - Satin Bronze
- US10B - Satin Dark Bronze
- US32 - Bright Stainless
- US32D - Satin Stainless Steel



**1843**



Front View



Side View

**Standard Features**

- Wall Plate supplied with chamfered edges to prevent ligature attachment
- Material - High Density Rubber Stop; 304 Stainless Steel Plate
- "SEC" Security fasteners provided standard
- Solid Rubber for durability
- Sloped to eliminate ligature points

**Specifications**

- Projection - 3" projection from face of wall
- 4-1/2" Diameter Plate

**Standard Finishes**

- US3 - Bright Brass
- US4 - Satin Brass
- US10 - Satin Bronze
- US10B - Satin Dark Bronze
- US32 - Bright Stainless
- US32D - Satin Stainless Steel