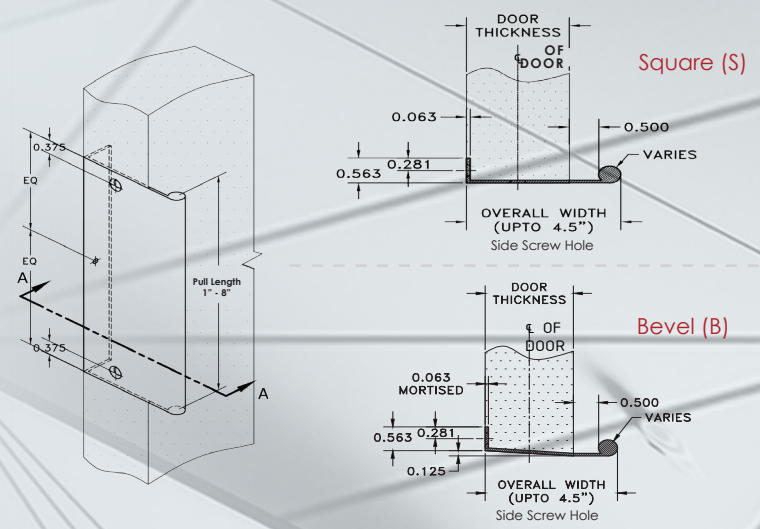
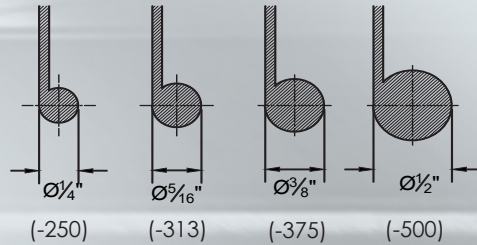
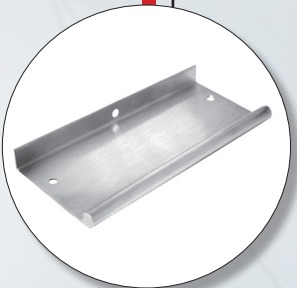
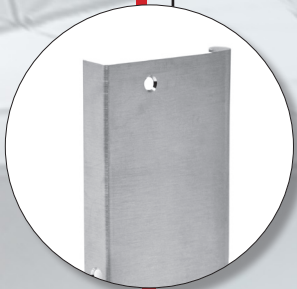
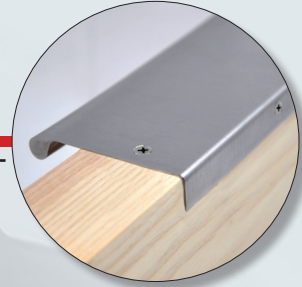


# 18200

*Custom*  
**Stainless Steel**  
**Round Edge Pull**



**Note:**

1. All Dimensions are in inches
2. Material: S.S. 0.0625 Thick
3. Screw: #6 x 5/8"
4. Finishes:  
US3, US4, US9, US10, US10B, US32, US32D
5. Square (S) or Bevel (B) option

Contact Factory for custom finishes

Order Form Below (see example)

| Series #        | Dia. | Door Thick | Lenght | S/B | Qty. |
|-----------------|------|------------|--------|-----|------|
| (example) 18200 | -250 | 1.75       | 6"     | S   | 25   |
| 1.              |      |            |        |     |      |
| 2.              |      |            |        |     |      |
| 3.              |      |            |        |     |      |