

AB4700

Decorative Vertical Straight Solid Door Pull

Standard Features:

- Comes standard with thru-bolt screws and decorative washers
- 1-1/2" to 1-3/4"
- Accessory package available for 2" and 2-1/4" thick doors
- Optional mounting hardware available

* Mounting hardware for custom door thicknesses available

Finishes:

- US3, US32, US32D, US4, US5, US9, US10, US10B
- Black Powder
- White Powder

* Custom Finishes and Powder Coating Available

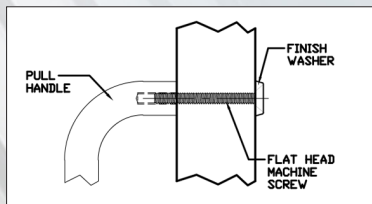
Additional Information

- Specify back to back machined pull or single
- Wood or Glass

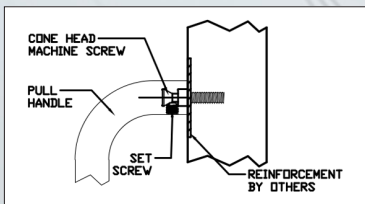
Mounting Options: Go to www.abhmfg.com

for more mounting information.

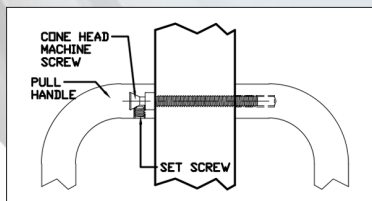
Thru Bolt - Type 1HD



Concealed - Type 6HD



Back-to-Back - Type 5HD



Glass Door Back-to-Back Type 13HD

