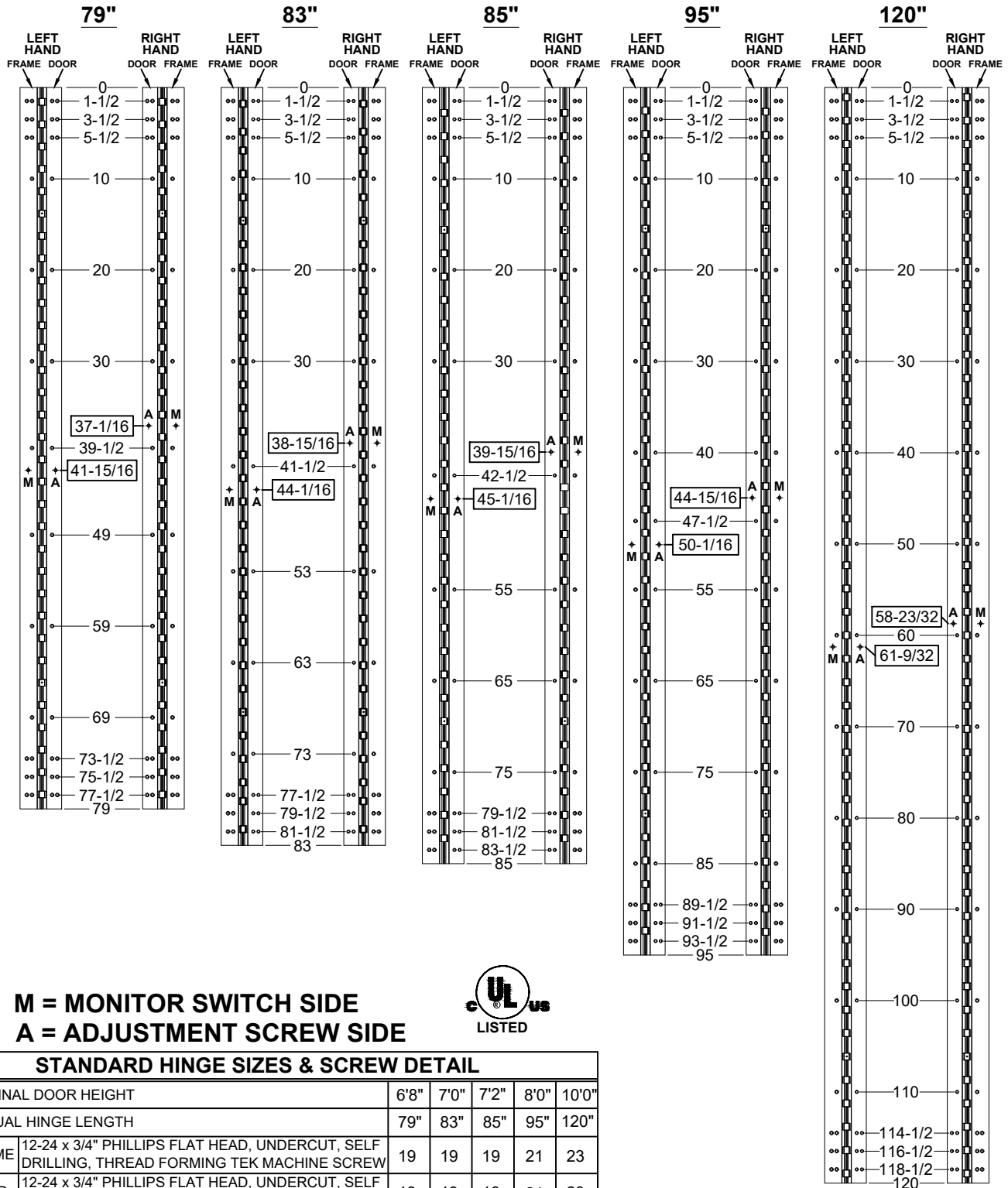


**A111HD - "ES" OPTION, CONCEALED ELECTRIFICATION, FULL CONCEALED,
ALUMINUM GEARED HINGE**



**M = MONITOR SWITCH SIDE
A = ADJUSTMENT SCREW SIDE**



STANDARD HINGE SIZES & SCREW DETAIL

| NOMINAL DOOR HEIGHT | 6'8" | 7'0" | 7'2" | 8'0" | 10'0" | |
|---------------------|--|------|------|------|-------|----|
| ACTUAL HINGE LENGTH | 79" | 83" | 85" | 95" | 120" | |
| FRAME | 12-24 x 3/4" PHILLIPS FLAT HEAD, UNDERCUT, SELF DRILLING, THREAD FORMING TEK MACHINE SCREW | 19 | 19 | 19 | 21 | 23 |
| DOOR | 12-24 x 3/4" PHILLIPS FLAT HEAD, UNDERCUT, SELF DRILLING, THREAD FORMING TEK MACHINE SCREW | 19 | 19 | 19 | 21 | 23 |

A111HD-ES OPTION, CONCEALED ELECTRIFICATION-1-02.DWG



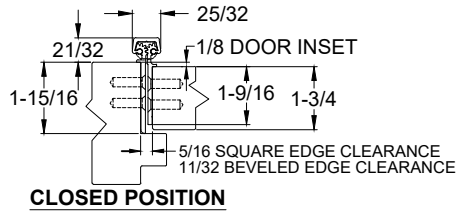
www.abhmf.com
E-mail: abhinfo@abhmf.com
Architectural Builders Hardware Mfg., Inc.
1222 Ardmore Ave., Itasca, IL 60143
630.875.9900; FAX 800.9FAXABH (932.9224)

**A111HD - "ES" OPTION
CONCEALED ELECTRIFICATION**

© 2020 ABH Mfg., Inc.
printed in USA

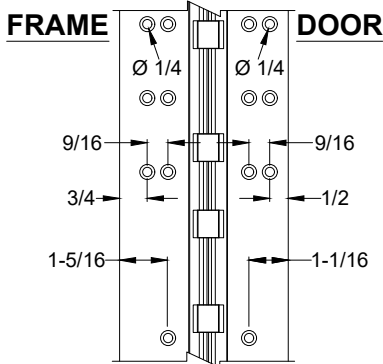
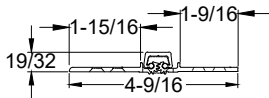
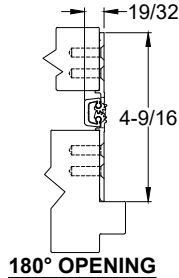
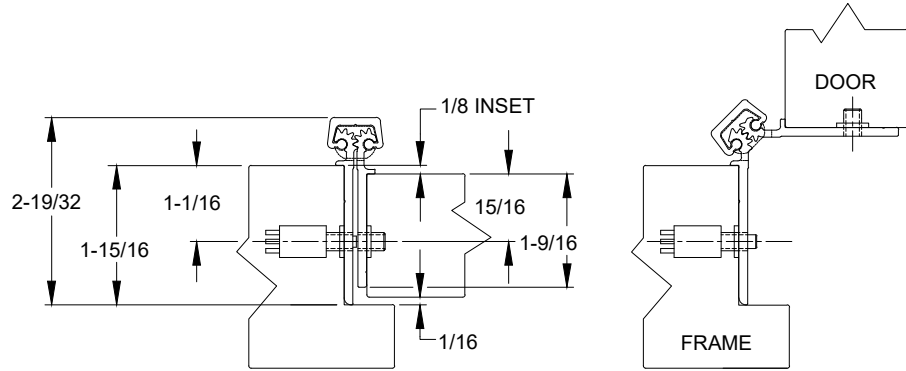
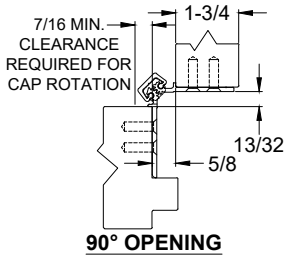
PAGE 1 OF 2
REVISED 10-28-20

**A111HD - "ES" OPTION, CONCEALED ELECTRIFICATION, FULL CONCEALED,
ALUMINUM GEARED HINGE**



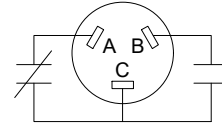
NOTES:

1. HINGES CUT TO CUSTOM LENGTH ARE CUT FROM BOTTOM OF HINGE.
2. SPECIFY HANDING WHEN ORDERING.
3. IF "M" OPTION (MOVEABLE PANEL) OR "R" OPTION (REMOVABLE PANEL) IS CHOSEN, TEMPLATE REMAINS THE SAME.



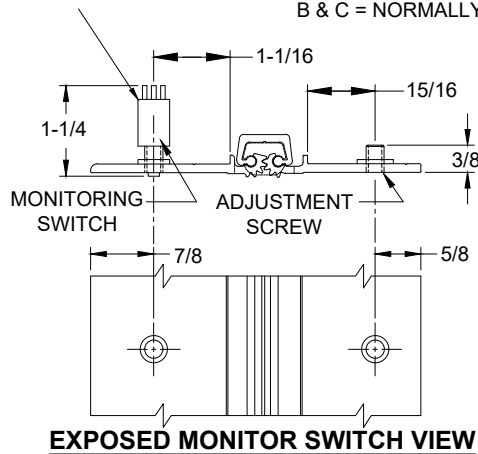
EXPOSED MONITOR SWITCH VIEW, LEFT HAND SHOWN

SWITCH SCHEMATIC



A & C = NORMALLY CLOSED
B & C = NORMALLY OPEN

NOTE: 5/8" DIA. HOLE REQUIRED IN JAMB FOR MONITORING SWITCH AND A 7/16" DIA. HOLE FOR CLEARANCE OF ADJUSTMENT SCREW



A111HD-ES OPTION, CONCEALED ELECTRIFICATION-2-02.DWG