

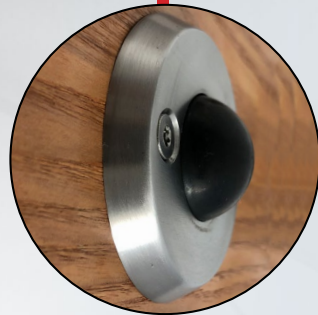
1841, 1842, 1843

Heavy Duty Ligature Resistant wall stop, to be used in behavioral health areas and facilities, designed to protect walls from excessive force and prevent patients from causing self harm.

1841



Front View



Side View

Standard Features

- Wall Plate supplied with chamfered edges to prevent ligature attachment
- Material - High Density Rubber Stop; 304 Stainless Steel Plate
- Stainless Steel - Other finishes by request
- "SEC" Security fasteners provided standard
- Sloped to eliminate ligature points

Specifications

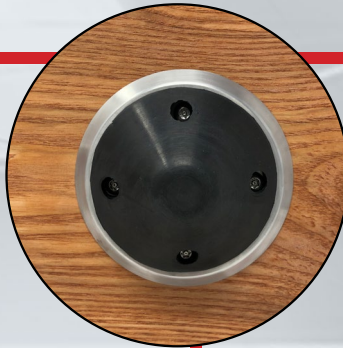
- Low Projection - 1" projection from face of wall
- 2-1/2" Diameter Plate

Standard Finishes

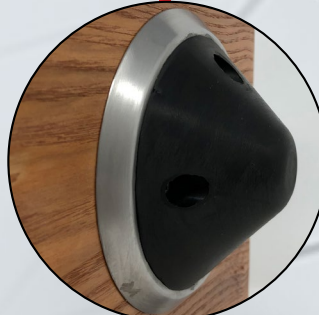
- US3 - Bright Brass
- US4 - Satin Brass
- US10 - Satin Bronze
- US10B - Satin Dark Bronze
- US32 - Bright Stainless
- US32D - Satin Stainless Steel



1842



Front View



Side View

Standard Features

- Wall Plate supplied with chamfered edges to prevent ligature attachment
- Material - High Density Rubber Stop; 304 Stainless Steel Plate
- "SEC" Security fasteners provided standard
- Solid Rubber for durability
- Sloped to eliminate ligature points

Specifications

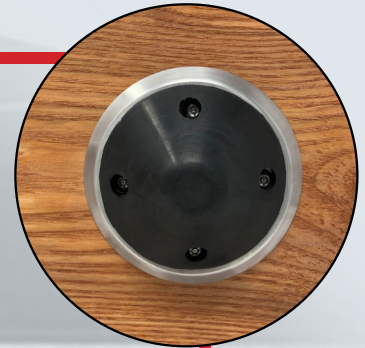
- Projection - 1 3/4" projection from face of wall
- 3-5/8" Diameter Plate

Standard Finishes

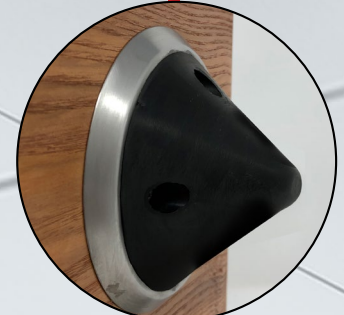
- US3 - Bright Brass
- US4 - Satin Brass
- US10 - Satin Bronze
- US10B - Satin Dark Bronze
- US32 - Bright Stainless
- US32D - Satin Stainless Steel



1843



Front View



Side View

Standard Features

- Wall Plate supplied with chamfered edges to prevent ligature attachment
- Material - High Density Rubber Stop; 304 Stainless Steel Plate
- "SEC" Security fasteners provided standard
- Solid Rubber for durability
- Sloped to eliminate ligature points

Specifications

- Projection - 3" projection from face of wall
- 4-1/2" Diameter Plate

Standard Finishes

- US3 - Bright Brass
- US4 - Satin Brass
- US10 - Satin Bronze
- US10B - Satin Dark Bronze
- US32 - Bright Stainless
- US32D - Satin Stainless Steel