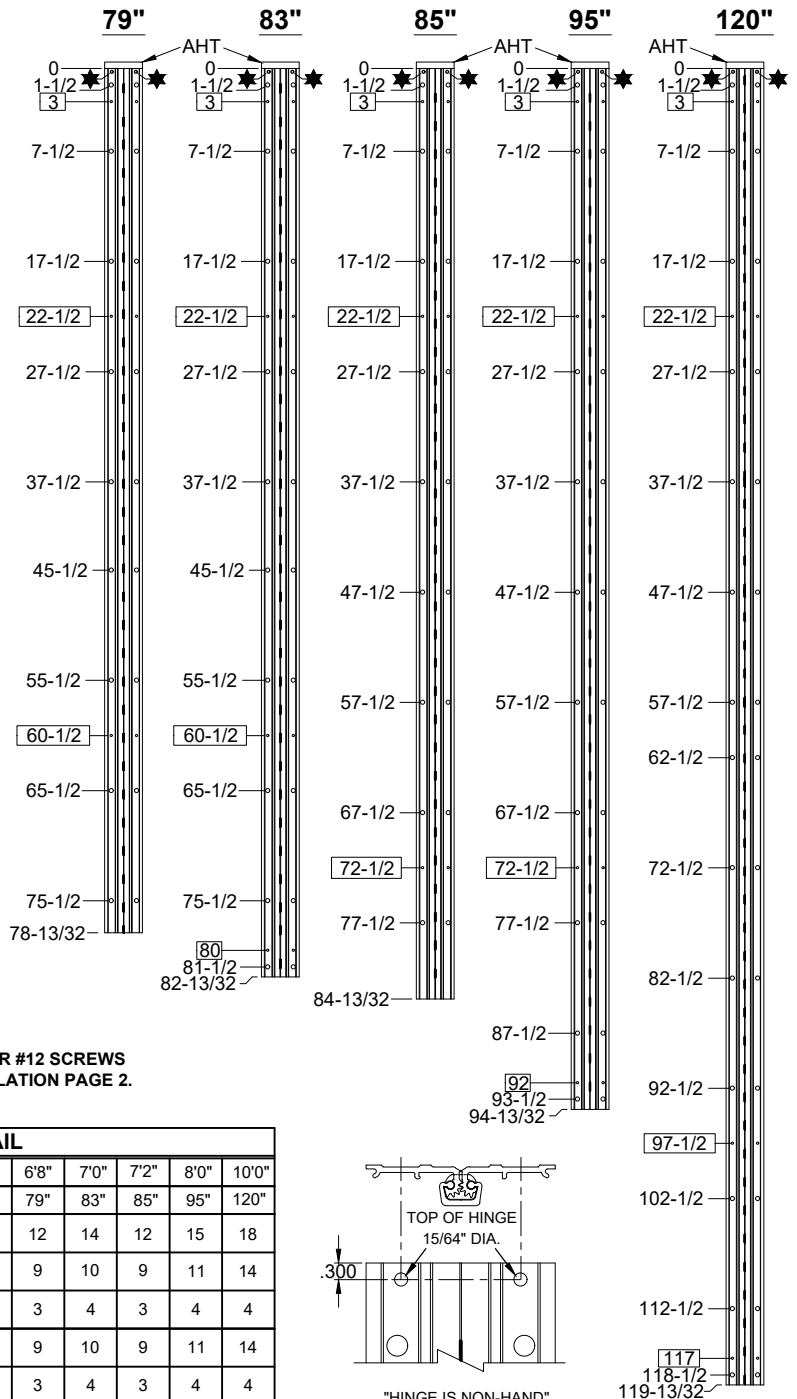
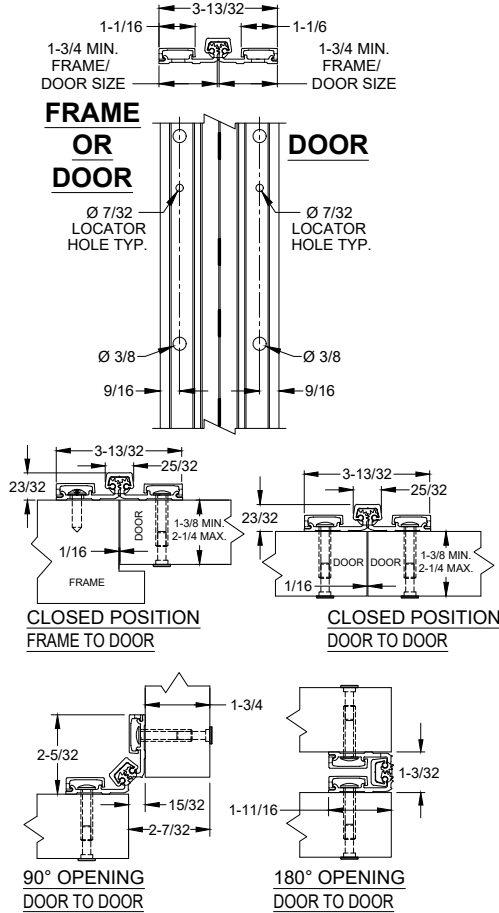


A571 - "AHT" OPTION, ADVANCED HOSPITAL TIP, ALUMINUM GEARED HINGE, BI FOLD APPLICATION, NO INSET, FULL SURFACE



- NOTES:**
- HINGES CUT TO CUSTOM LENGTH ARE CUT FROM THE BOTTOM. PLEASE SPECIFY HANDING.
 - ALL DIMENSIONS ARE IN INCHES.
 - ALL DIMENSIONS ARE TO CENTERLINE OF HOLES.
 - XX" DENOTES LOCATOR HOLE.
- ★ = ADVANCED HOSPITAL TIP (AHT), AT THE TOP OF THE HINGE.
 MANUFACTURING TO ADD (2) .234 (15/64") DIA. THRU HOLES FOR #12 SCREWS CENTERED BETWEEN THE HINGE LEAF CAP SLOT. SEE INSTALLATION PAGE 2.

STANDARD HINGE SIZES & SCREW DETAIL

NOMINAL DOOR HEIGHT		6'8"	7'0"	7'2"	8'0"	10'0"	
ACTUAL HINGE LENGTH		79"	83"	85"	95"	120"	
FRAME TO DOOR	FRAME	12-24 x 1" PHILLIPS PAN HEAD, SELF DRILLING, THREAD FORMING TEK SCREW	12	14	12	15	18
	DOOR	1/4-20 x 1-1/4" x 3/8 DIA. SEX BOLT & 1/4-20 x 1-1/4" PH. HEAD SHOULDER SCREW	9	10	9	11	14
DOOR TO DOOR	DOOR #1	1/4-20 x 1-1/4" x 3/8 DIA. SEX BOLT & 1/4-20 x 1-1/4" PH. HEAD SHOULDER SCREW	9	10	9	11	14
		12-24 x 1" PH. PN. HD. SELF DRILLING TEK SCREW (LOCATOR HOLE)	3	4	3	4	4
	DOOR #2	1/4-20 x 1-1/4" x 3/8 DIA. SEX BOLT & 1/4-20 x 1-1/4" PH. HEAD SHOULDER SCREW	9	10	9	11	14
		12-24 x 1" PH. PN. HD. SELF DRILLING TEK SCREW (LOCATOR HOLE)	3	4	3	4	4
AHT	12-24 x 3/4" TORX FLAT HEAD UNDERCUT, SELF DRILLING, THREAD FORMING TEK MACHINE SCREW	2	2	2	2	2	
	#12 x 1-1/2" TORX FLAT HEAD UNDERCUT SHEET METAL SCREW	2	2	2	2	2	

"AHT" OPTION
 SEE PAGE 2 FOR COMPLETE DETAILS

A571-AHT OPTION, ADVANCED HOSPITAL TIP-1-01.DWG



www.abhmfg.com
 E-mail: abhinfo@abhmfg.com
 Architectural Builders Hardware Mfg., Inc.
 1222 Ardmore Ave., Itasca, IL 60143
 630.875.9900; FAX 800.9FAXABH (932.9224)

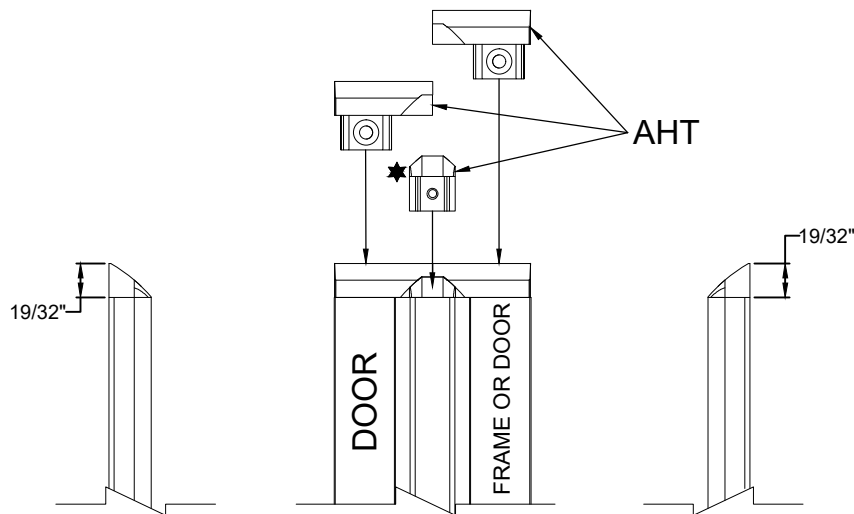
©2020 ABH Mfg., Inc.
 printed in USA

A571 - "AHT" OPTION
 ADVANCED HOSPITAL TIP
 PAGE 1 OF 2
 REVISED 8-12-21

A571 - "AHT" OPTION, ADVANCED HOSPITAL TIP, ALUMINUM GEARED HINGE,
BI FOLD APPLICATION, NO INSET, FULL SURFACE

A571 AHT (ADVANCED HOSPITAL TIP) INSTALLATION INSTRUCTIONS

1. INSTALL TOP OF HINGE 19/32" FROM THE TOP OF THE DOOR
2. BEFORE INSTALLING DOOR AND FRAME LEAF COVERS, FASTEN DOOR AND FRAME SIDE HOSPITAL TIP SECTIONS
3. **INSTALL DOOR SIDE AHT SECTION**
 - a. SLIDE AHT SECTION INTO SLOT ON HINGE LEAF, THIS WILL LINE UP WITH THE PREDRILLED HINGE LEAF THRU-HOLE
 - b. FOR METAL DOORS, MARK HOLE LOCATION, THEN DRILL AND FASTEN THE AHT SECTION USING PROVIDED 12-24 X 7/8" TORX FLAT HEAD, UNDERCUT, SELF-DRILLING, THREAD FORMING TEK MACHINE SCREW
 - c. FOR WOOD DOORS, MARK HOLE LOCATION AND DRILL 3/16" PILOT HOLE, FASTEN AHT SECTION USING PROVIDED #12 X 1-1/2" TORX FLAT HEAD, UNDERCUT WOOD SCREW
4. **INSTALL FRAME SIDE AHT SECTION**
 - a. SLIDE AHT SECTION INTO SLOT ON HINGE LEAF, THIS WILL LINE UP WITH THE PREDRILLED HINGE LEAF THRU-HOLE
 - b. FOR METAL FRAMES, MARK HOLE LOCATION, THEN DRILL AND FASTEN THE AHT SECTION USING PROVIDED 12-24 X 7/8" TORX FLAT HEAD, UNDERCUT, SELF-DRILLING, THREAD FORMING TEK MACHINE SCREW
 - c. FOR WOOD FRAMES, MARK HOLE LOCATION AND DRILL 3/16" PILOT HOLE, FASTEN AHT SECTION USING PROVIDED #12 X 1-1/2" TORX FLAT HEAD, UNDERCUT WOOD SCREW
5. BEFORE TIGHTENING THE SCREWS DOWN COMPLETELY, DOOR AND FRAME AHT SECTIONS SHOULD BE FLUSH WITH THE TOP OF THE DOOR.
6. INSTALL DOOR AND FRAME LEAF COVERS



A571-AHT OPTION, ADVANCED HOSPITAL TIP-2-01.DWG