

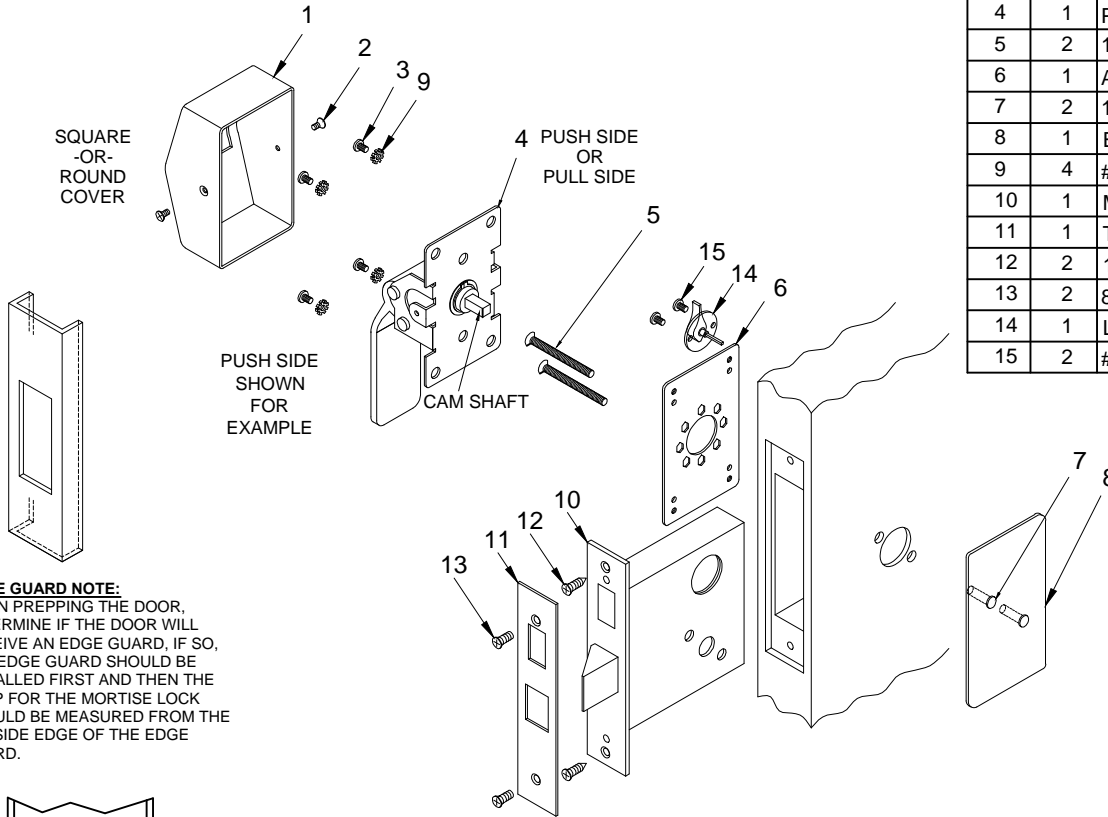
6600EO SERIES EXIT ONLY PUSH/PULL HANDLE INSTALLATION FOR MORTISE LOCK



NOTES

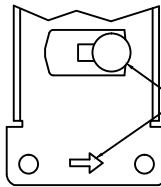
1. TRIM CAN BE MOUNTED UP, DOWN, HORIZONTALLY OR VERTICALLY. **
2. VISION LITE MUST BE AT LEAST 6" FROM CENTERLINE OF TRIM.
3. USES 6600EO SERIES MORTISE LOCK DOOR PREP.
4. 6600EO MORTISE LOCK CYLINDER & LOCK CAM NOT PROVIDED.

ITEM	QTY	PART DESCRIPTION
1	1	COVER
2	2	8-32 x 3/8" FHMS
3	4	10-32 x 1/4" PAN HD. M.S.
4	1	PUSH OR PULL HANDLE ASSY
5	2	10-32 x 1-3/4" FHMS
6	1	ADAPTER PLATE
7	2	12-24 x 1/2" SEX BOLT
8	1	EXIT ONLY PLATE
9	4	#10 STAR WASHER
10	1	MORTISE LOCK
11	1	TRIM PLATE
12	2	12-24 x 3/4" FH COMBO
13	2	8-32 x 1/4" FHMS
14	1	LOCKING THUMB TURN (If used)
15	2	#8 x 1/2" FHSMS



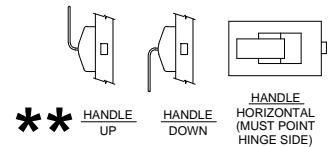
EDGE GUARD NOTE:

WHEN PREPPING THE DOOR, DETERMINE IF THE DOOR WILL RECEIVE AN EDGE GUARD. IF SO, THE EDGE GUARD SHOULD BE INSTALLED FIRST AND THEN THE PREP FOR THE MORTISE LOCK SHOULD BE MEASURED FROM THE OUTSIDE EDGE OF THE EDGE GUARD.



NOTE:
BEFORE MOUNTING BASE ASSEMBLIES CAM PIN MUST BE ROTATED TOWARDS SIDE INDICATED BY ARROW STAMPED ON THE BASE.

DETAIL "A"



INSTALLATION INSTRUCTIONS:

1. Install mortise lock (item 10) using (2) 12-24 screws (item 12). Then mount the trim plate (item 11) using (2) 8-32 screws (item 13).
2. Before mounting adapter plate (item 6) & exit only plate (item 8), determine which side of the door will receive the push or pull handle assembly (item 4) and the direction the handle will mount. Handle can be mounted up, down or horizontally.
3. Mount adapter plate (item 6) & exit only plate (item 8) to door with (2) 10-32 screws (item 5) thru door and mortise lock to (2) 10-32 sex bolts (item 7). tighten securely.
4. Before mounting handle assembly (item 4), cam pin must be rotated towards the correct side of the handle (see detail A).
5. Mount handle assembly (item 4) to adapter plate (item 6) with (4) 10-32 screws (item 3) with (4) star washers (item 9).
6. Test lock for proper operation. If latch bolt does not extend or retract freely because of any type of binding, loosen mounting screws to adjust alignment of trim handle assembly (item 4) and re-tighten screws one at a time while checking latch bolt movement.
7. Place cover (item 1) over handle assembly (item 4) and secure with (2) 8-32 screws (item 2) on each side.
8. If provided, install locking thumb turn (item 14) using (2) #8 screws (item 15).

PATENT No. 6,196,599 & 5,730,478



www.abhmfg.com
E-mail: abhinfo@abhmfg.com
Architectural Builders Hardware Mfg., Inc.
1222 Ardmore Ave., Itasca, IL 60143
630.875.9900; FAX 800.9FAXABH (932.9224)

© 2019 ABH Mfg., Inc.
printed in USA

6600EO-1-03.DWG

6600EO
PAGE 1 OF 3
ISSUED 03-28-19

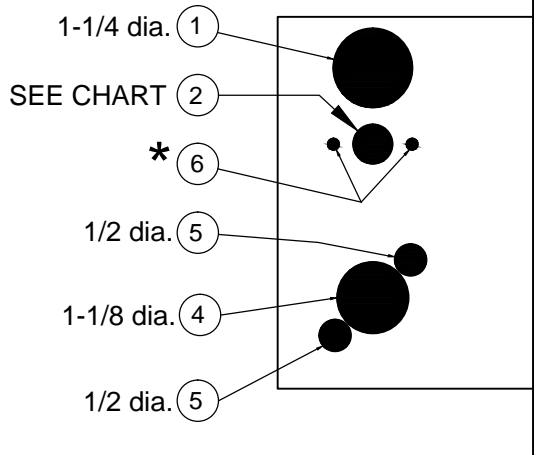
6600EO SERIES HOLE PATTERN CHART

Lockset function	Inside holes					Outside holes				
	1	2	4	5	6	1	2	4	5	6
	Cylinder 1-1/4" dia.	Turn knob 5/8" dia.	Trim 1-1/8" dia.	Thru-bolt 1/2" dia. (2)	Trim turn knob *(2)	Cylinder 1-1/4" dia.	Emergency Key 1/2" dia.	Trim 1-1/8" dia.	Thru-bolt 1/2" dia. (2)	Trim turn knob *(2)
6610EO (Passage/Closet Latchset)			■	■				■	■	
6632EO (Privacy)		■	■	■			■	■	■	
6637EO (Store Door Lock)	■		■	■		■		■	■	
6638EO (Entry/Restroom Lock)	■		■	■		■		■	■	
6641EO (Asylum Lock)	■		■	■		■		■	■	
6645EO (Hotel/Motel Lock)		■	■	■	■	■		■	■	
6652EO (Office Lock)		■	■	■	■	■		■	■	
6653EO (Entry/Office Lock)		■	■	■		■		■	■	
6654EO (Dormitory/Bedroom Lock)		■	■	■	■	■		■	■	
6656EO (Classroom Lock)			■	■		■		■	■	
6657EO (Dormitory Lock)		■	■	■		■		■	■	
6658EO (Storeroom/Exit Lock)			■	■		■		■	■	

* Determine trim holes based on trim type.

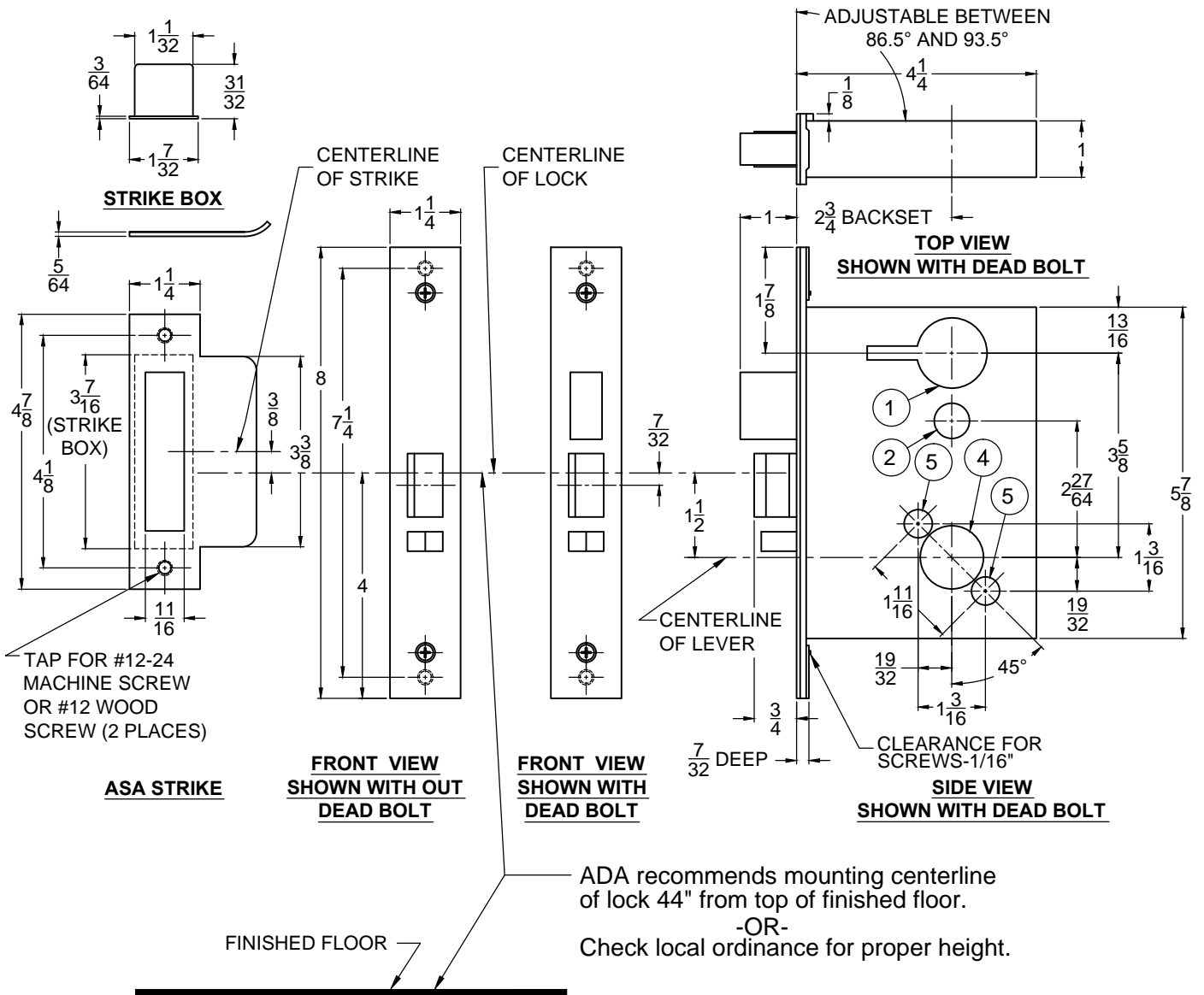
ADA recommends mounting centerline of lock 44" from top of finished floor.

-OR- Check local ordinance for proper height.



Caution: Not all holes shown above need to be drilled. Use the diagram AND the chart to determine the holes that you need to drill for your trim and function combination.

6600EO SERIES PUSH/PULL LATCH - DOOR & FRAME PREP



Lock case holes:

- ① Cylinder hole- $1\frac{1}{4}$ " dia.
- ② Turn knob- $5/8$ " dia. / Emergency key- $1/2$ " dia.
- ④ Trim hole- $1\frac{1}{8}$ " dia.
- ⑤ Thru-bolt holes- (two required) $1/2$ " dia.

Notes:

1. Before drilling check the hole pattern chart.
2. The maximum door-to-frame gap is $3/16$ ".
3. Allow $3/64$ " clearance for the strike box thickness.
4. For metal door, lock case support is required from the door manufacturer.
5. Tap for a #12-24 machine screw or drill for a #12 wood screw (a combination screw is supplied).