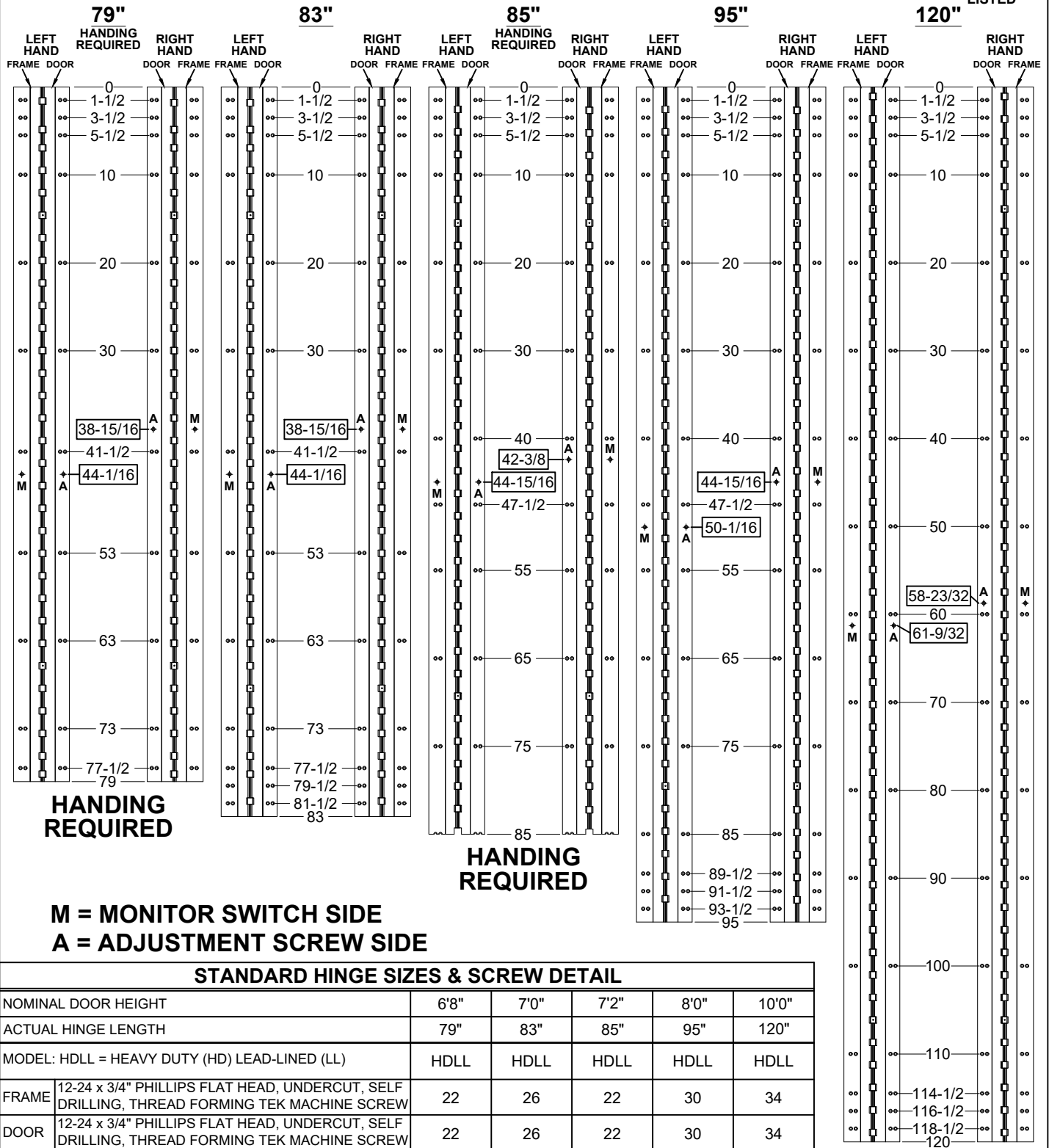


**A111WT\_HDLL - ALUMINUM GEARED HINGE, WIDE THROW, FLUSH MOUNT, FULL CONCEALED**

- HINGES ARE SUPPLIED WITH LEAD-LINED MOUNTING HOLES FOR ADDITIONAL SUPPORT AS STANDARD
- "ES" OPTION, CONCEALED ELECTRIFICATION



**HANDING REQUIRED**

**HANDING REQUIRED**

**M = MONITOR SWITCH SIDE  
A = ADJUSTMENT SCREW SIDE**

A111WT-ES OPTION, CONCEALED ELECTRIFICATION-1-03.DWG



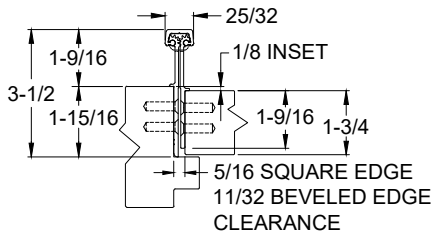
www.abhmfg.com  
E-mail: abhinfo@abhmfg.com  
Architectural Builders Hardware Mfg., Inc.  
1222 Ardmore Ave., Itasca, IL 60143  
630.875.9900; FAX 800.9FAXABH (932.9224)

© 2020 ABH Mfg., Inc.  
printed in USA

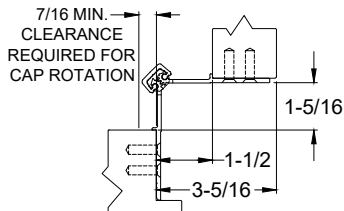
**A111WT - "ES" OPTION  
CONCEALED ELECTRIFICATION**

PAGE 1 OF 2  
REVISED 10-29-20

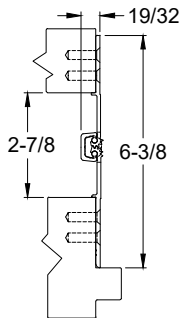
**A111WT - "ES" OPTION, CONCEALED ELECTRIFICATION, FULL CONCEALED,  
ALUMINUM GEARED HINGE**



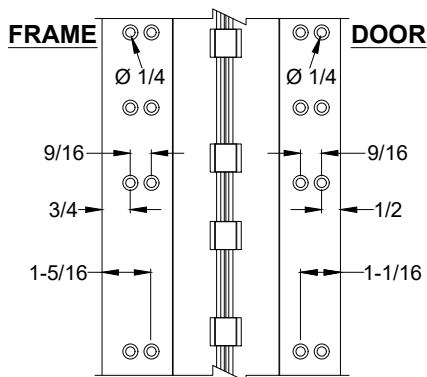
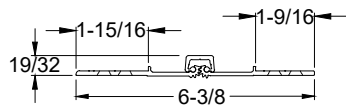
**CLOSED POSITION**



**90° OPENING**

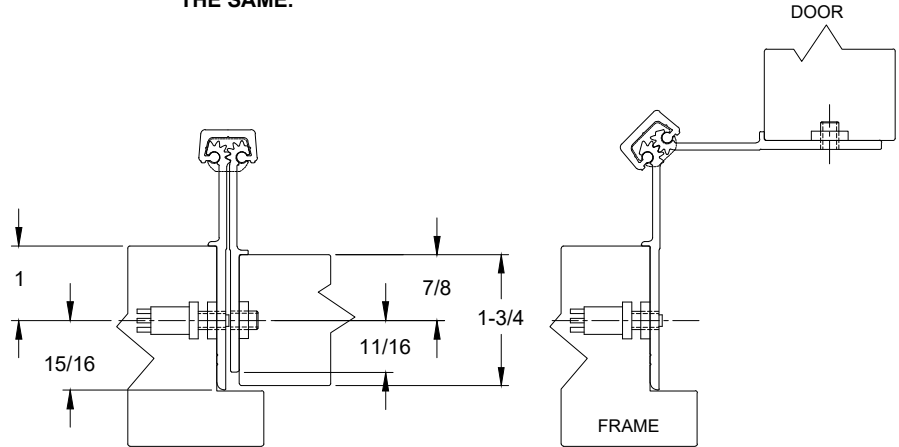


**180° OPENING**



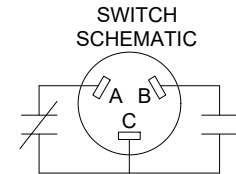
**NOTES:**

1. HINGES CUT TO CUSTOM LENGTH ARE CUT FROM BOTTOM OF HINGE.
2. SPECIFY HANDING WHEN ORDERING.
3. IF "M" OPTION (MOVEABLE PANEL) OR "R" OPTION (REMOVABLE PANEL) IS CHOSEN, TEMPLATE REMAINS THE SAME.

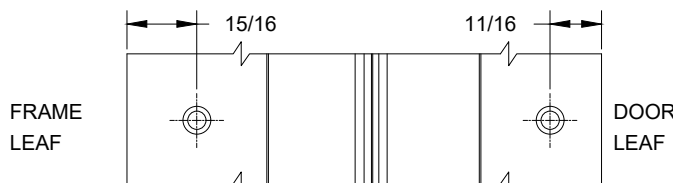
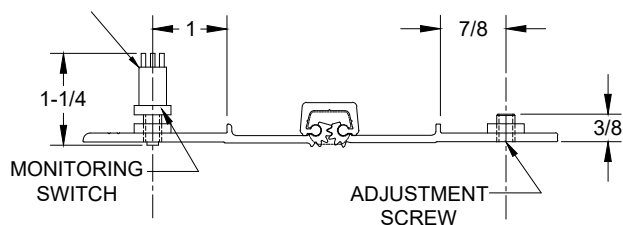


**EXPOSED MONITOR SWITCH VIEW, LEFT HAND SHOWN**

NOTE: 5/8" DIA. HOLE REQUIRED IN JAMB FOR MONITORING SWITCH AND A 7/16" DIA. HOLE FOR CLEARANCE OF ADJUSTMENT SCREW



A & C = NORMALLY CLOSED  
B & C = NORMALLY OPEN



**EXPOSED MONITOR SWITCH VIEW**

A111WT-ES OPTION, CONCEALED ELECTRIFICATION-2-03.DWG



www.abhmfg.com  
E-mail: abhinfo@abhmfg.com  
Architectural Builders Hardware Mfg., Inc.  
1222 Ardmore Ave., Itasca, IL 60143  
630.875.9900; FAX 800.9FAXABH (932.9224)

© 2020 ABH Mfg., Inc.  
printed in USA

**A111WT - "ES" OPTION  
CONCEALED ELECTRIFICATION**

PAGE 2 OF 2  
REVISED 10-29-20