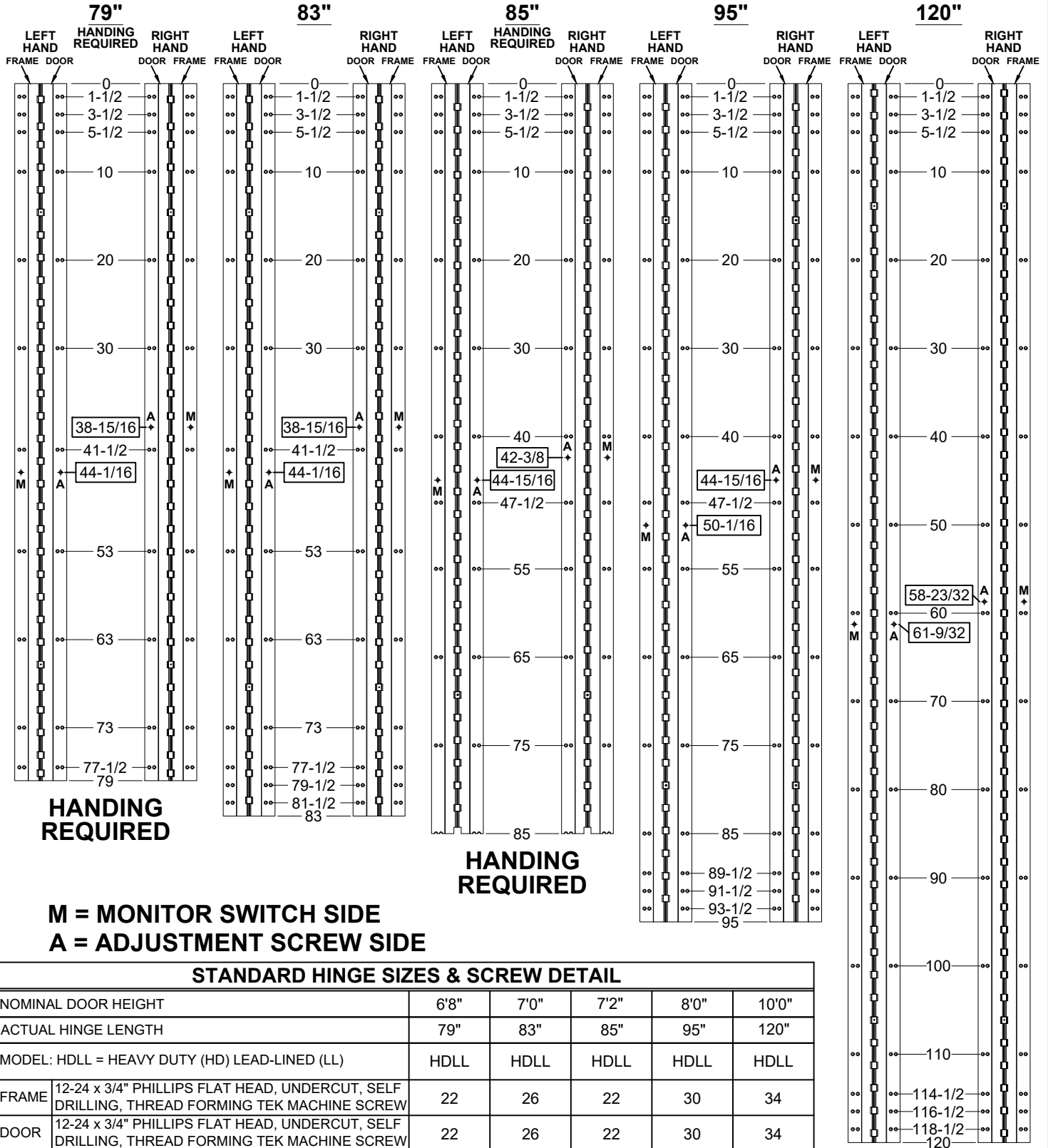


**A110WT HDLL - ALUMINUM GEARED HINGE, WIDE THROW, FLUSH MOUNT, FULL CONCEALED**

- HINGES ARE SUPPLIED WITH LEAD-LINED MOUNTING HOLES FOR ADDITIONAL SUPPORT AS STANDARD
- "ES" OPTION, CONCEALED ELECTRIFICATION



A110WT-ES OPTION, CONCEALED ELECTRIFICATION-1-03



www.abhmfg.com  
E-mail: abhinfo@abhmfg.com  
Architectural Builders Hardware Mfg., Inc.  
1222 Ardmore Ave., Itasca, IL 60143  
630.875.9900; FAX 800.9FAXABH (932.9224)

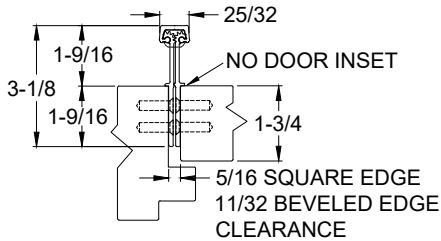
**A110WT - "ES" OPTION**  
**CONCEALED ELECTRIFICATION**

© 2018 ABH Mfg., Inc.  
printed in USA

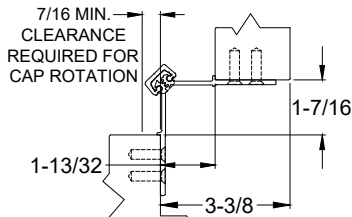
PAGE 1 OF 2  
REVISED 9-23-20

**A110WT HDLL - ALUMINUM GEARED HINGE, WIDE THROW, FLUSH MOUNT, FULL CONCEALED**

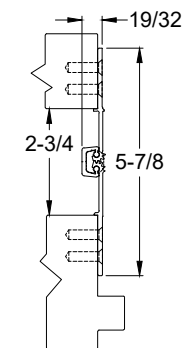
- HINGES ARE SUPPLIED WITH LEAD-LINED MOUNTING HOLES FOR ADDITIONAL SUPPORT AS STANDARD
- "ES" OPTION, CONCEALED ELECTRIFICATION



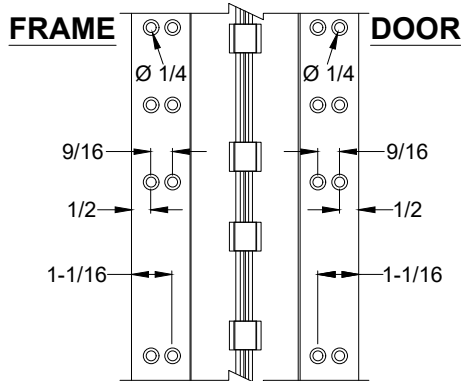
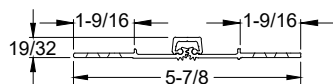
**CLOSED POSITION**



**90° OPENING**

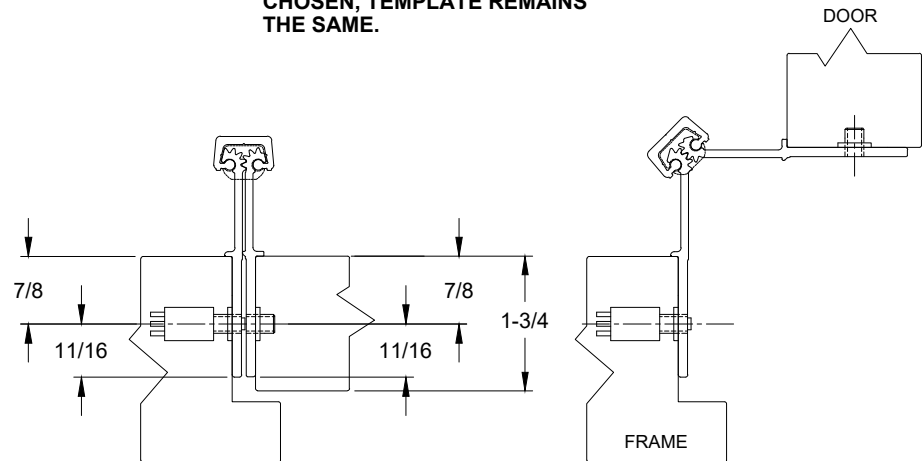


**180° OPENING**



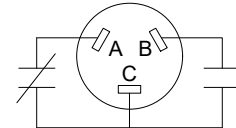
**NOTES:**

1. HINGES CUT TO CUSTOM LENGTH ARE CUT FROM BOTTOM OF HINGE.
2. SPECIFY HANDING WHEN ORDERING.
3. IF "M" OPTION (MOVEABLE PANEL) OR "R" OPTION (REMOVABLE PANEL) IS CHOSEN, TEMPLATE REMAINS THE SAME.



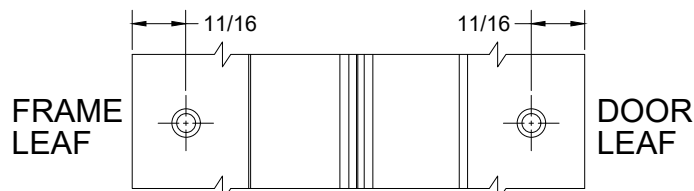
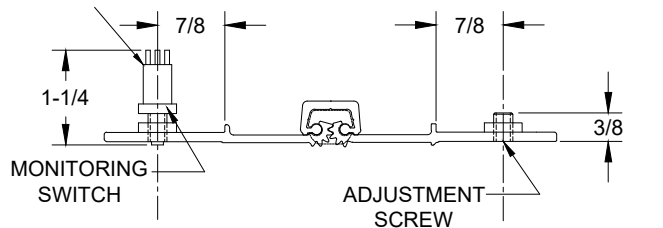
**EXPOSED MONITOR SWITCH VIEW, LEFT HAND SHOWN**

**SWITCH SCHEMATIC**



A & C = NORMALLY CLOSED  
B & C = NORMALLY OPEN

NOTE: 5/8" DIA. HOLE REQUIRED IN JAMB FOR MONITORING SWITCH AND A 7/16" DIA. HOLE FOR CLEARANCE OF ADJUSTMENT SCREW



**EXPOSED MONITOR SWITCH VIEW**

A110WT-ES OPTION, CONCEALED ELECTRIFICATION-2-03



www.abhmfg.com  
E-mail: abhinfo@abhmfg.com  
Architectural Builders Hardware Mfg., Inc.  
1222 Ardmore Ave., Itasca, IL 60143  
630.875.9900; FAX 800.9FAXABH (932.9224)

© 2018 ABH Mfg., Inc.  
printed in USA

**A110WT - "ES" OPTION**  
CONCEALED ELECTRIFICATION

PAGE 2 OF 2  
REVISED 9-23-20