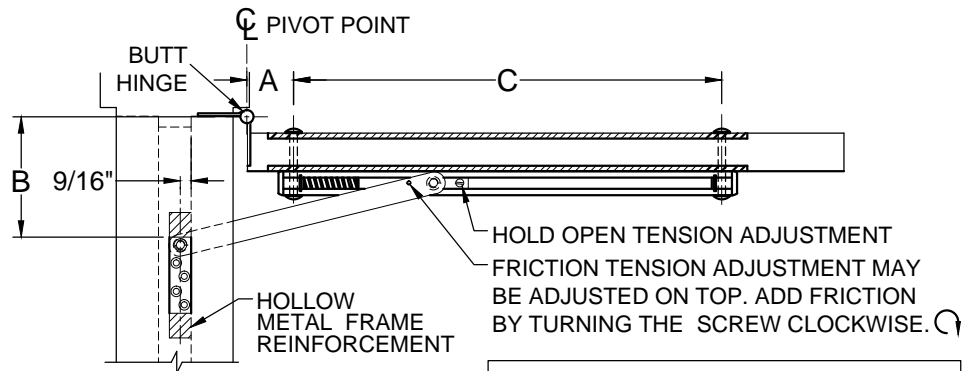
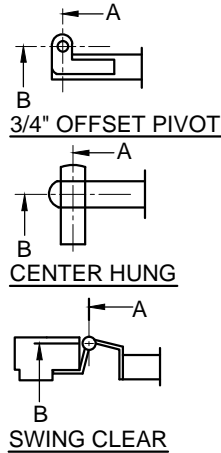
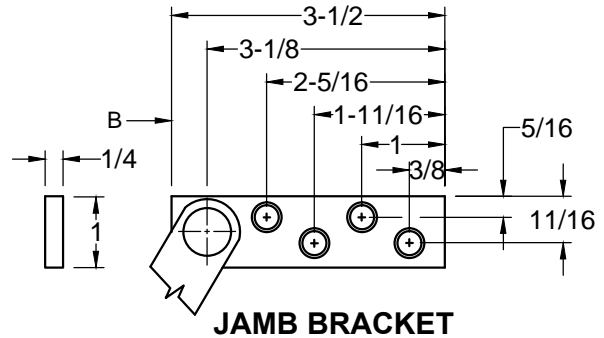


9000 SERIES HOLDERS & STOPS

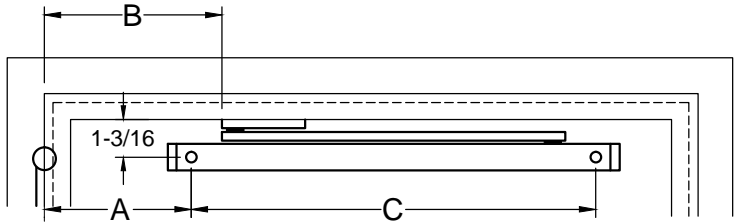
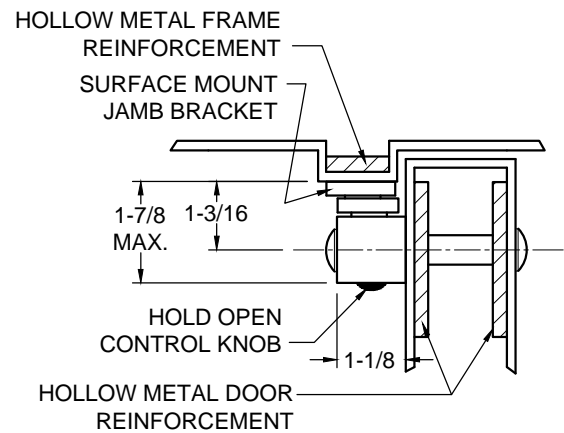
SURFACE MOUNT



A = ϵ OF PIVOT POINT TO ϵ OF FIRST SEX BOLT.
B = ϵ OF PIVOT POINT TO START OF JAMB BRACKET
C = ϵ OF FIRST SEX BOLT TO ϵ OF SECOND SEX BOLT.



ALIGN FRICTION TENSION ADJUSTMENT SCREW TO THIS HOLE. ADD FRICTION BY TURNING THE SCREW COUNTERCLOCKWISE.



SPECIFY ANGLE JAMB BRACKET 90541 FOR HINGE SIDE OR FLUSH TRANSOM MOUNTING

SINGLE ACTING DOOR

SCREW DETAIL			
	QTY	WOOD	METAL
JAMB	4	● #14 x 1-1/2" FLAT HEAD WOOD SCREW	● 1/4-20 x 3/4" FLAT HEAD MACHINE SCREW
DOOR	2	● 5/16-18 x 2" TRUSS HEAD MACHINE SCREW ● 1/2" DIA. SEX BOLT	

NOTES:

1. REVERSIBLE/ NON - HANDED
2. FOR SINGLE ACTING DOORS ONLY
3. ALL DRILLING & TAPPING TO BE DONE IN FIELD.
4. ALWAYS REQUEST LATEST TEMPLATE/ DRAWING FOR NEW INSTALLATIONS.
5. ALL DIMENSIONS ARE IN INCHES, UNLESS NOTED OTHERWISE.
6. DRAWING IS NOT TO SCALE



www.abhmfg.com
 E-mail: abhinfo@abhmfg.com
 Architectural Builders Hardware Mfg., Inc.
 1222 Ardmore Ave., Itasca, IL 60143
 630.875.9900; FAX 800.9FAXABH (932.9224)

©2017 ABH Mfg., Inc.
 printed in USA

9000-1-09.DWG

9000

9000 SERIES SURFACE HOLDERS & STOPS

SURFACE MOUNT

- 9010 HOLD-OPEN ● 9020 STOP ● 9030 FRICTION

1. FOR DEAD STOP ADD 5/8" TO "A" DIMENSION
 2. ALL DIMENSIONS ARE IN INCHES.

* BUTT HINGES ONLY
 ** BUTT HINGES & OFFSET PIVOTS ONLY

DOOR THICKNESS	DEGREE		85° H.O.		90° H.O.		95° H.O.		100° H.O.		105° H.O.		110° H.O.		C
	MODEL NO.	DOOR OPENING	A	B	A	B	A	B	A	B	A	B	A	B	
1-3/4" TO 2-1/4"	●9018 ●9028 ●9038	24 TO 27-15/16	** 3-3/8	** 5-1/2	** 3	** 5-7/16	** 2-3/4	** 4-13/16	** 2-1/2	** 4-5/16	* 2-1/4	* 4-5/16	—	—	17-1/2
	●9011 ●9021 ●9031	28 TO 29-15/16	** 3-1/16	** 7-9/16	** 2-9/16	** 7-1/16	** 2-1/4	** 6-3/4	** 1-15/16	** 6-7/16	** 1-5/8	** 6-1/8	** 1-3/8	** 5-7/8	20-1/2
	●9012 ●9022 ●9032	30 TO 31-15/16	5-3/16	8	4-11/16	7-1/2	4-5/16	7-1/8	4	6-13/16	3-11/16	6-1/2	3-7/16	6-1/4	20-15/16
BUTT HINGE, SWING CLEAR HINGE OR 3/4" OFFSET PIVOT	●9013 ●9023 ●9033	32 TO 35-15/16	5-15/16	8-5/8	5-3/8	8-1/16	5	7-11/16	4-5/8	7-5/16	4-5/16	7	4	6-11/16	21-5/8
	●9014 ●9024 ●9034	36 TO 39-15/16	8-7/8	9-11/16	8-1/4	9-1/16	7-13/16	8-5/8	7-3/8	8-3/16	7-1/16	7-7/8	6-11/16	7-1/2	22-13/16
	●9015 ●9025 ●9035	40 TO 41-15/16	11-3/4	10-3/4	11-1/16	10-1/16	10-5/8	10-5/8	10-1/16	9-1/16	9-11/16	8-11/16	9-5/16	8-5/16	24
	●9016 ●9026 ●9036	42 TO 43-15/16	13-3/16	11-1/4	12-1/2	10-9/16	12	10-1/16	11-1/2	9-9/16	11-1/16	9-1/8	10-5/8	8-11/16	24-9/16
	●9017 ●9027 ●9037	44 TO 56	14-11/16	11-13/16	13-15/16	11-1/16	13-3/8	10-1/2	12-7/8	10	12-3/8	9-1/2	11-15/16	9-1/16	25-1/8

CENTER HUNG	DEGREE		85° H.O.		90° H.O.		95° H.O.		100° H.O.		105° H.O.		110° H.O.		C
	MODEL NO.	DOOR OPENING	A	B	A	B	A	B	A	B	A	B	A	B	
	● 9018 ● 9028 ● 9038	26 TO 29-15/16	4	6-5/8	3-3/4	6	3-1/2	5-9/16	3-3/4	4	3-5/8	3-3/4	3-1/2	3-7/16	17-1/2
	● 9011 ● 9021 ● 9031	30 TO 33-15/16	3-5/8	8-1/8	3-3/16	7-11/16	2-13/16	7-5/16	2-1/2	7	2-1/4	6-3/4	2	6-1/2	20-1/2
	● 9012 ● 9022 ● 9032	34 TO 35-15/16	5-13/16	8-5/8	5-3/8	7-3/16	4-15/16	7-3/4	4-5/8	7-7/16	4-5/16	7-1/8	4-1/16	6-7/8	20-15/16
	● 9013 ● 9023 ● 9033	36 TO 38-15/16	6-9/16	9-1/4	6-1/16	9-3/4	5-5/8	8-5/16	5-1/4	7-15/16	4-15/16	7-5/8	4-5/8	7-5/16	21-5/8
	● 9014 ● 9024 ● 9034	39 TO 40-15/16	9-1/2	10-5/16	8-15/16	10-3/4	8-7/16	9-1/4	8	8-13/16	7-5/8	8-7/16	7-1/4	8-1/16	22-13/16
	● 9015 ● 9025 ● 9035	41 TO 44-15/16	12-7/16	11-7/16	11-13/16	10-13/16	11-1/4	10-1/4	10-3/4	9-3/4	10-5/16	9-5/16	9-15/16	9-3/16	24
	● 9016 ● 9026 ● 9036	45 TO 46-15/16	13-7/8	11-15/16	13-3/16	11-1/4	12-9/16	10-5/8	12-1/16	10-1/8	11-5/8	9-11/16	11-1/4	9-5/16	24-9/16
	● 9017 ● 9027 ● 9037	47 TO 56	15-3/8	12-1/2	14-11/16	11-13/16	14-1/16	10-5/8	13-1/2	10-5/8	13	10-1/8	12-5/8	9-3/4	25-1/8



www.abhmfg.com
 E-mail: abhinfo@abhmfg.com
 Architectural Builders Hardware Mfg., Inc.
 1222 Ardmore Ave., Itasca, IL 60143
 630.875.9900; FAX 800.9FAXABH (932.9224)

©2017 ABH Mfg., Inc.
 printed in USA