

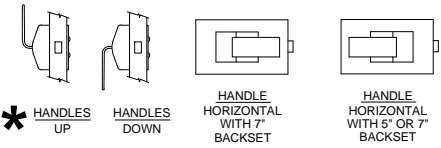
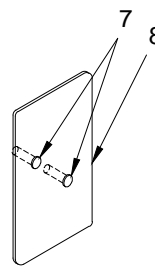
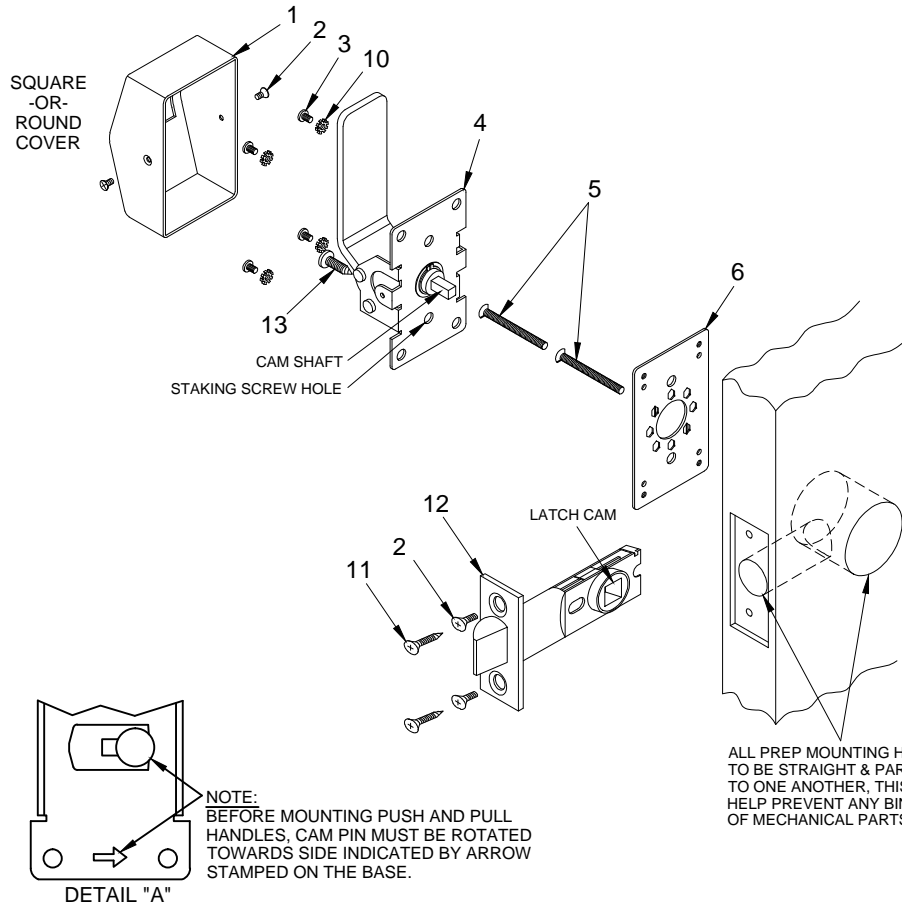
6100EO SERIES EXIT ONLY PUSH/PULL HANDLE INSTALLATION RETROFIT FOR 161 PREP (NO ADDITIONAL THRU BOLTS REQUIRED)



NOTES

1. TRIM CAN BE MOUNTED UP, DOWN, HORIZONTALLY OR VERTICALLY. **
2. USES STANDARD 161 DOOR PREP.
3. VISION LITE MUST BE AT LEAST 6" FROM CENTERLINE OF TRIM.

ITEM	QTY	PART DESCRIPTION
1	1	COVER
2	4	8-32 x 3/8" FHMS
3	4	10-32 x 1/4" PAN HD. M.S.
4	1	PUSH OR PULL HANDLE ASSY
5	2	12-24 x 1-7/8" FHMS
6	1	ADAPTER PLATE
7	2	12-24 x 1/2" SEX BOLT
8	1	EXIT ONLY PLATE
9	.	.
10	4	#10 STAR WASHER
11	2	#8 x 3/4" FHWS
12	1	LATCH
13	1	#12 x 1/2" PHSMS STAKING SCREWS



INSTALLATION INSTRUCTIONS:

1. Door to be machined for standard 161 .
2. Install latch (item 12) using either #8 FHWS (item 11) or 8-32 FHMS (item 2) depending on door material type.
3. Before mounting adapter plate (item 6) & exit only plate (item 8), determine which side of the door will receive the push or pull handle assembly (item 4) and the direction the handle will mount. Handle can be mounted up, down or horizontally.
4. Mount adapter plate (item 6) & exit only plate (item 8) to door with (2) 12-24 screws (item 5) thru door and latch to (2) 12-24 sex bolts (item 7). tighten securely.
5. Before mounting handle assembly (item 4), cam pin must be rotated towards the correct side of the handle (see detail A).
6. Mount handle assembly (item 4) to adapter plate (item 6) with (4) 10-32 screws (item 3) with (4) star washers (item 10).
7. Test lock for proper operation. If latch bolt does not extend or retract freely because of any type of binding, loosen mounting screws to adjust alignment of trim handle assembly (item 4) and re-tighten screws one at a time while checking latch bolt movement.
8. To prevent the handle assembly from possible twisting, which in turn can cause binding, determine which staking screw hole will be used for the handle assembly (the staking screw installs on the staking screw hole location opposite the direction the handle is mounted). Install staking screw using #12 PHSMS (item 13).
9. Place cover (item 1) over handle assembly (item 4) and secure with (2) 8-32 screws (item 2) on each side.

PATENT No. 6,196,599 & 5,730,478



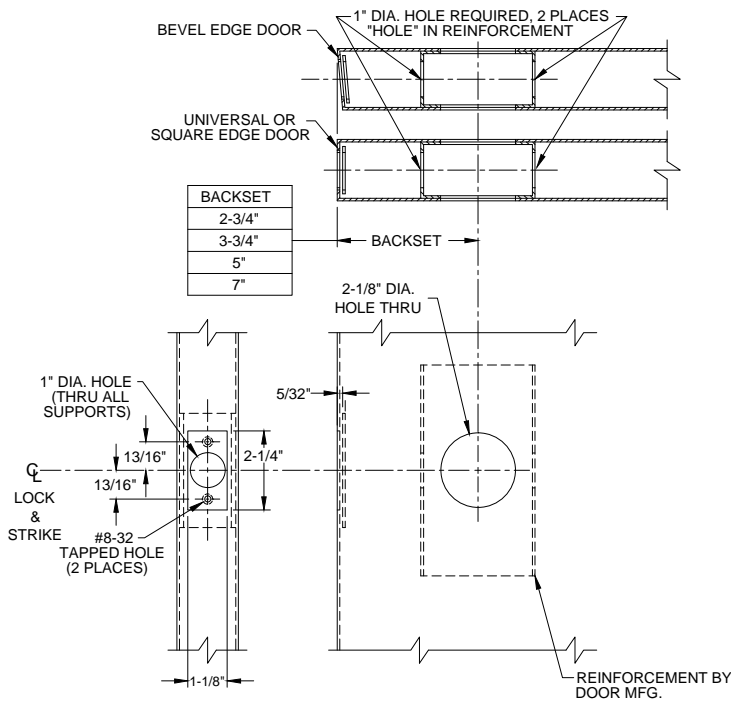
® www.abhmfg.com
E-mail: abhinfo@abhmfg.com
Architectural Builders Hardware Mfg., Inc.
1222 Ardmore Ave., Itasca, IL 60143
630.875.9900; FAX 800.9FAXABH (932.9224)

©2017 ABH Mfg., Inc.
printed in USA

6100EO-1-00.DWG

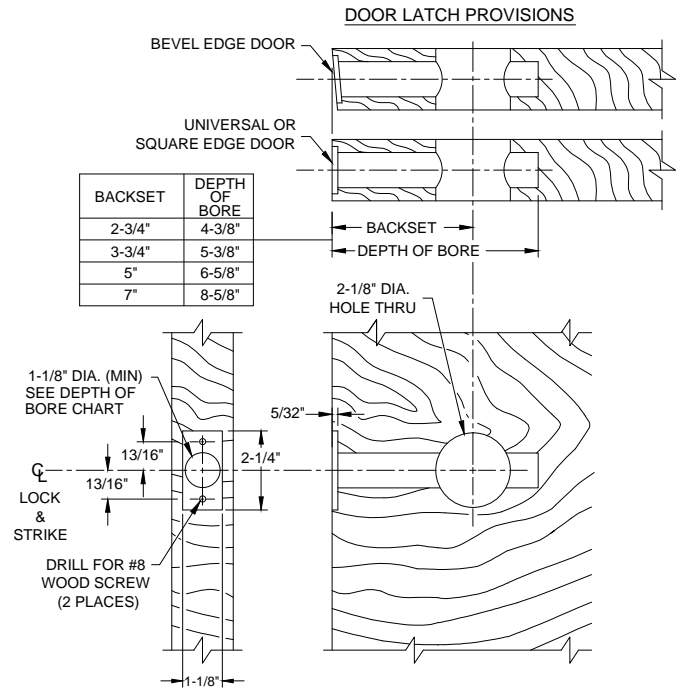
6100EO
PAGE 1 OF 3
ISSUED 06-08-17

6100EO SERIES PUSH/PULL LATCH - DOOR PREP



METAL DOOR

(VERTICAL OR HORIZONTAL MOUNTING SHOWN)

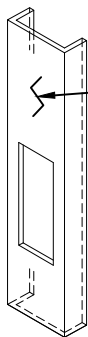


WOOD DOOR

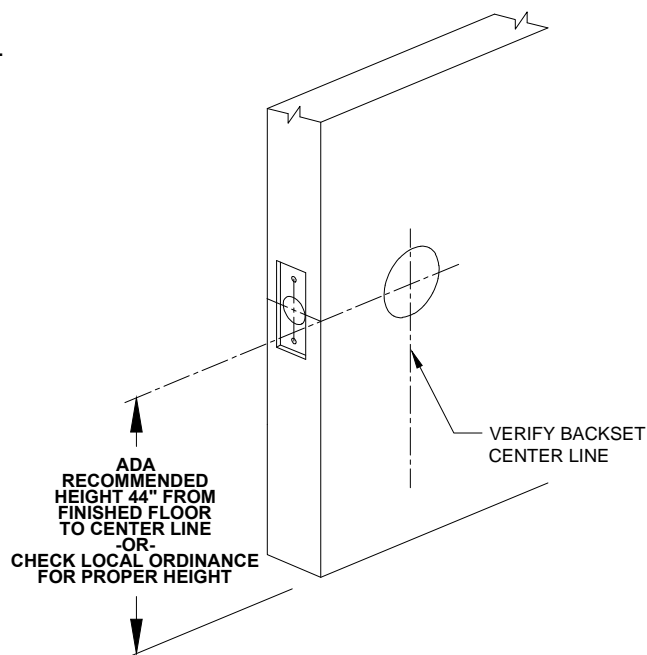
(VERTICAL OR HORIZONTAL MOUNTING SHOWN)

DOOR PREP INFORMATION:

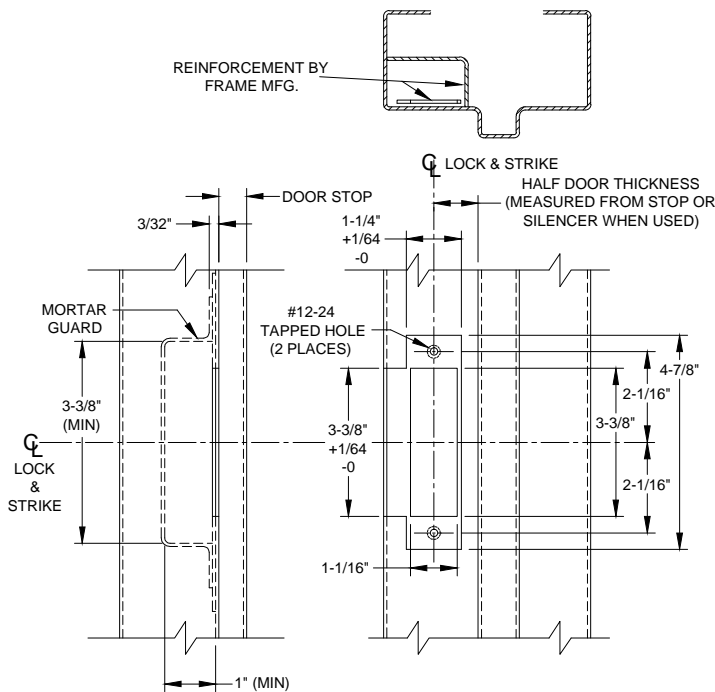
1. BACKSET DIMENSION FROM LOW EDGE OF BEVEL.
2. CENTER PUNCH ALL HOLES.
3. DRILL HOLES (FOR HOLLOW METAL DOORS, DO NOT DRILL THRU. CENTER PUNCH & DRILL HOLES FROM BOTH SIDES OF DOOR).
4. REINFORCEMENT MUST BE APPLIED ON METAL DOORS AT THE SCREW LOCATIONS.
5. REINFORCEMENT TO BE SUPPLIED BY DOOR MANUFACTURER. THE HANDLE ASSYS MUST BE SUPPORTED. THE LATCH BOLT UNIT MUST BE SUPPORTED AND CENTERED WITHIN 1/16" OF THE CENTERLINE AT THE BACK END.



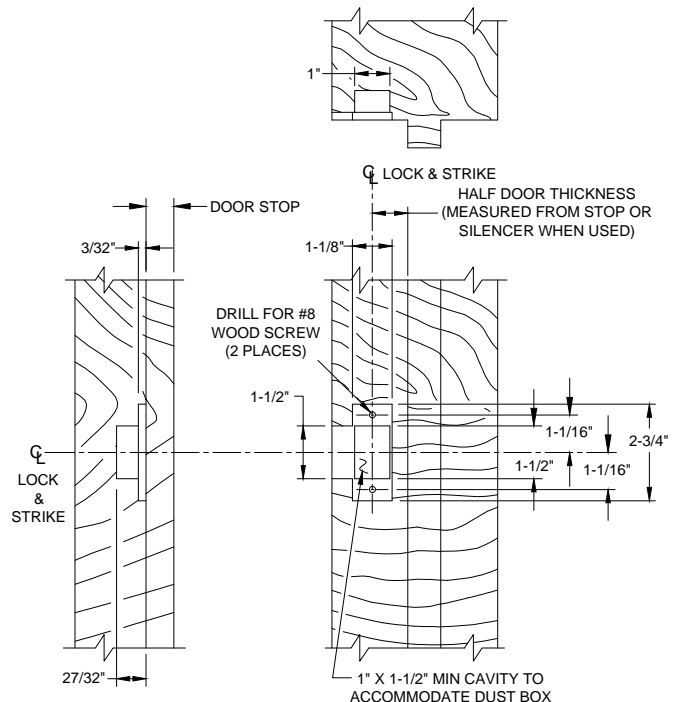
EDGE GUARD NOTE:
WHEN PREPPING THE DOOR FOR THE BACKSET, DETERMINE IF THE DOOR WILL RECEIVE AN EDGE GUARD. IF SO, THE EDGE GUARD SHOULD BE INSTALLED FIRST AND THEN THE PREP FOR THE LATCH BACKSET SHOULD BE MEASURED FROM THE OUTSIDE EDGE OF THE EDGE GUARD.



6100EO SERIES PUSH/PULL LATCH - FRAME PREP



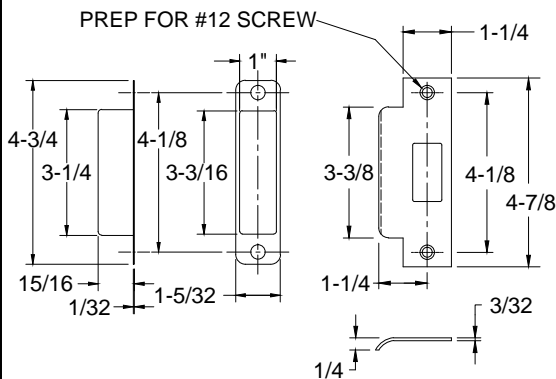
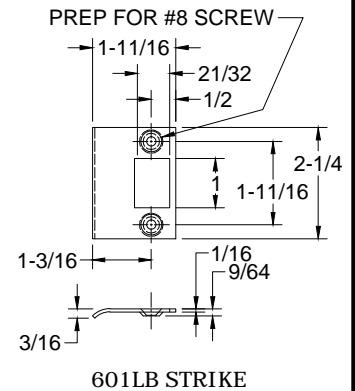
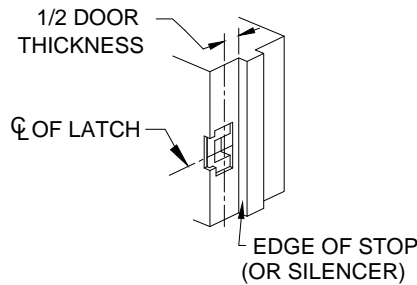
METAL FRAME
(ASA STRIKE SHOWN FOR EXAMPLE)



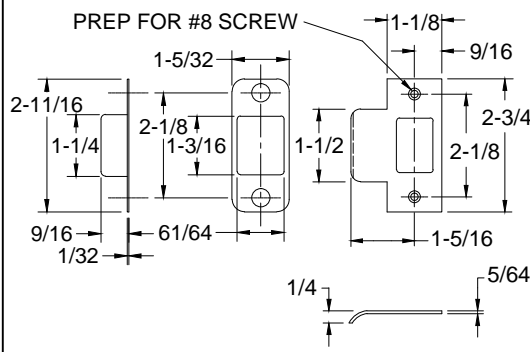
WOOD FRAME
(**"T"** STRIKE SHOWN FOR EXAMPLE)

FRAME PREP:

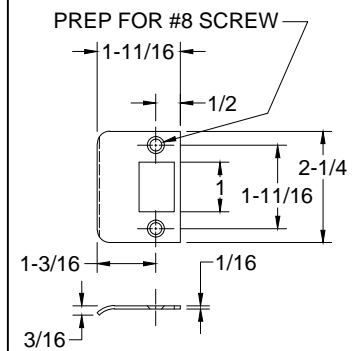
1. Mark centerline of latch bolt on frame.
2. Center strike and mark screw positions.
3. Mortise to required strike and box depth.
4. All dimensions in inches.



ASA STRIKE & DUST BOX



"T" STRIKE & DUST BOX



"D" STRIKE



® www.abhmfg.com
 E-mail: abhinfo@abhmfg.com
 Architectural Builders Hardware Mfg., Inc.
 1222 Ardmore Ave., Itasca, IL 60143
 630.875.9900; FAX 800.9FAXABH (932.9224)

©2017 ABH Mfg., Inc.
 printed in USA

6100EO-3-00.DWG

6100EO

PAGE 3 OF 3

ISSUED 06-08-17