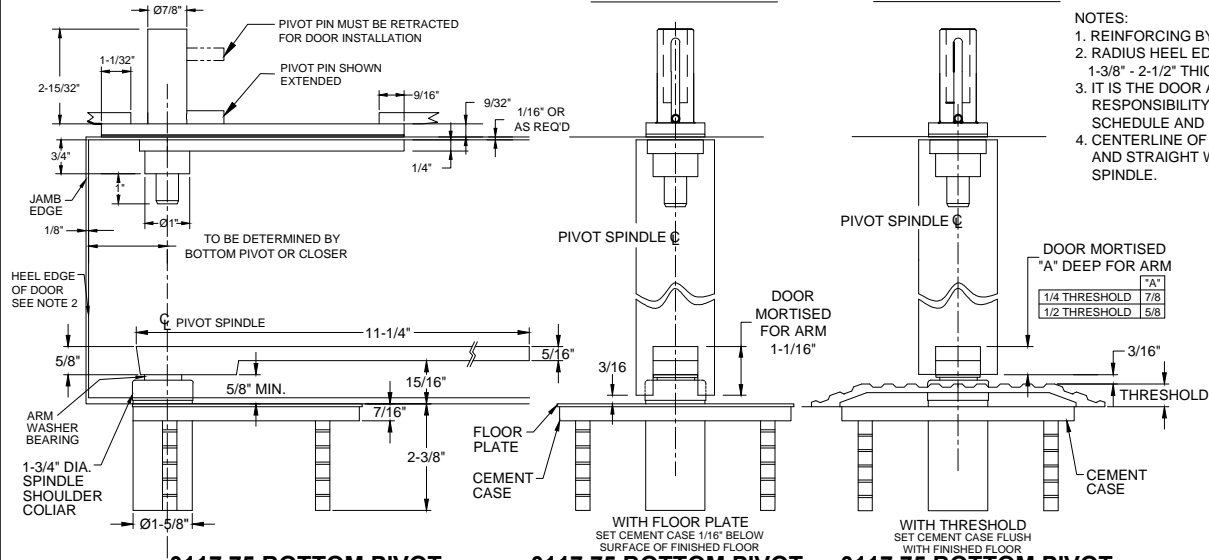


0117.75 PIVOT SET, CENTER HUNG, NON-HANDED

0345 TOP PIVOT (SHOWN WITH PIN ENGAGED)

0345 TOP PIVOT

0345 TOP PIVOT

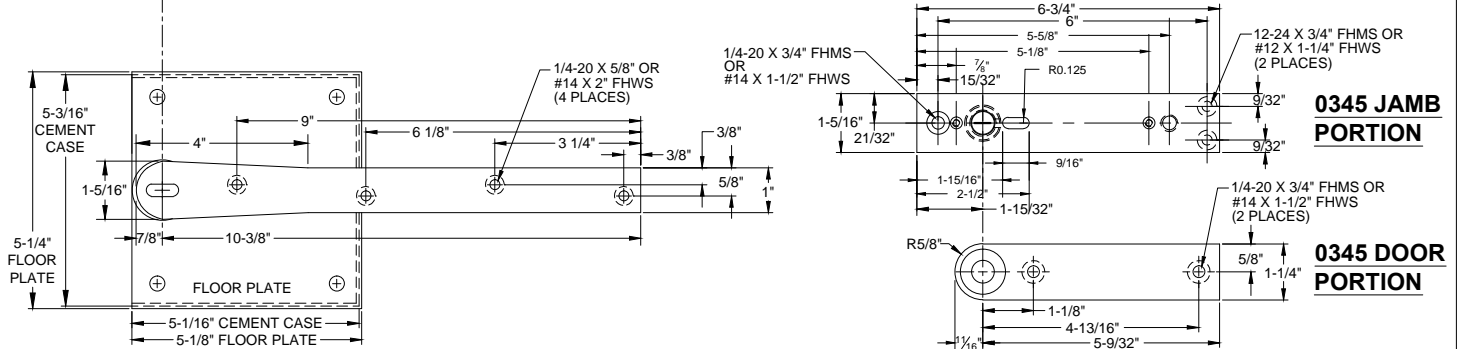


- NOTES:
1. REINFORCING BY OTHERS.
 2. RADIUS HEEL EDGE OF DOOR 1-1/4" MAX FOR 1-3/8" - 2-1/2" THICK DOORS
 3. IT IS THE DOOR AND FRAME MANUFACTURERS RESPONSIBILITY TO CHECK THE HARDWARE SCHEDULE AND PREP THE DOORS AND FRAMES.
 4. CENTERLINE OF TOP PIVOT PIN MUST BE PLUMB AND STRAIGHT WITH BOTTOM PIVOT OR CLOSER SPINDLE.

0117.75 BOTTOM PIVOT

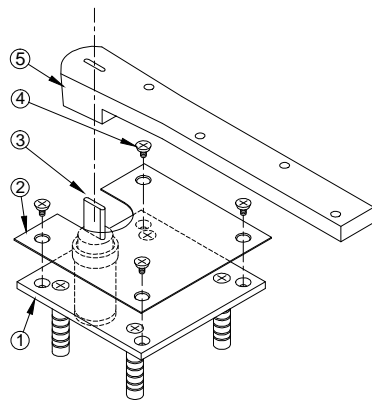
0117.75 BOTTOM PIVOT

0117.75 BOTTOM PIVOT

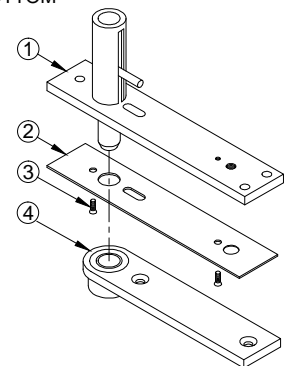
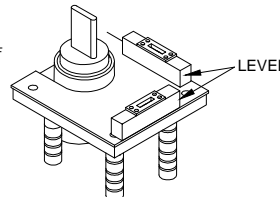
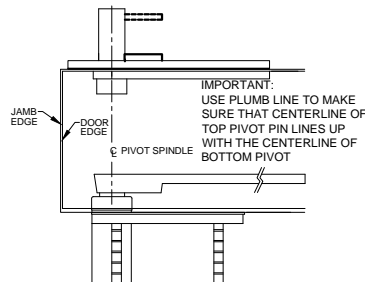


INSTALLATION INSTRUCTIONS

1. REINFORCING BY OTHERS.
2. RADIUS HEEL EDGE OF DOOR 1-1/4" MAX FOR 1-3/8" - 2-1/2" THICK DOORS
3. IT IS THE DOOR AND FRAME MANUFACTURERS RESPONSIBILITY TO CHECK THE HARDWARE SCHEDULE AND PREP THE DOORS AND FRAMES.
4. CENTERLINE OF TOP PIVOT PIN MUST BE PLUMB AND STRAIGHT WITH BOTTOM PIVOT OR CLOSER SPINDLE.
5. MEASURE 2" OUT FROM DOOR JAMB ON CENTERLINE OF DOOR. THIS IS THE LOCATION OF SPINDLE CENTER.
6. INSTALL THE 0345 JAMB PORTION PER TEMPLATE.
7. INSTALL THE 0345 DOOR PORTION PER TEMPLATE.
8. FASTEN 0345 DRESS PLATE TO 0345 JAMB PORTION.
9. INSTALL THE 0117.75 DOOR PORTION PER TEMPLATE.
10. INSTALL THE 0117.75 FLOOR PORTION PER TEMPLATE.
11. PLACE DOOR ON 0117.75 BOTTOM PIVOT AND LEAN THE TOP OF THE DOOR NEAR THE TOP JAMB.



ITEM NO.	QTY.	PART NO.
1	1	0117.50 CEMENT CASE
2	1	0117.50 CEMENT CASE MOUNTING PLATE
3	1	0117.75 PIVOT PIN
4	4	0117.50 CASE MOUNTING PLATE SCREWS
5	1	0117.75 ARM



ITEM NO.	QTY.	PART NO.
1	1	0345 JAMB PORTION
2	1	0345 DRESS PLATE
3	2	0345 DRESS PLATE SCREW
4	1	0345 DOOR PORTION



www.abhmf.com
 E-mail: abhinfo@abhmf.com
 Architectural Builders Hardware Mfg., Inc.
 1222 Ardmore Ave., Itasca, IL 60143
 630.875.9900; FAX 800.9FAXABH (932.9224)

©2017 ABH Mfg., Inc.
 printed in USA

0117.75-05.DWG

0117.75

PAGE 1 OF 1

REVISED 08-24-17