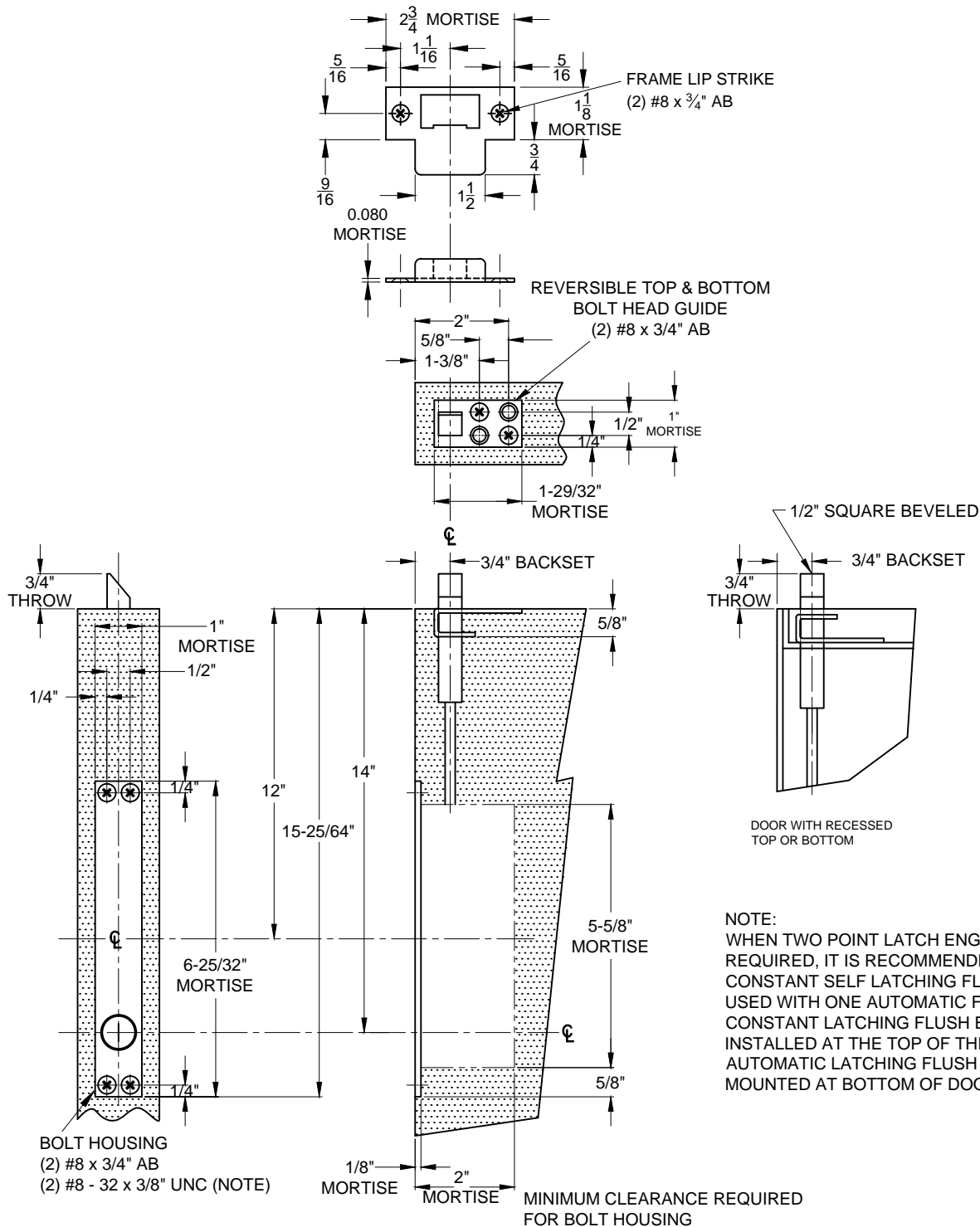


# 1863S CONSTANT LATCHING FLUSH BOLT TOP BOLT ONLY, METAL DOOR APPLICATION



SCREW DETAILS: #8 - 32 x 3/8" UNC - FLAT COUNTERSUNK HEAD MACHINE SCREW, TOTAL 2 PCS.  
#8 - 32 x 3/4" AB - UNDERCUT FLAT COUNTERSUNK HEAD, DUAL PURPOSE MACHINE/TAPPING SCREW, TOTAL 8 PCS.

1863S-00.DWG