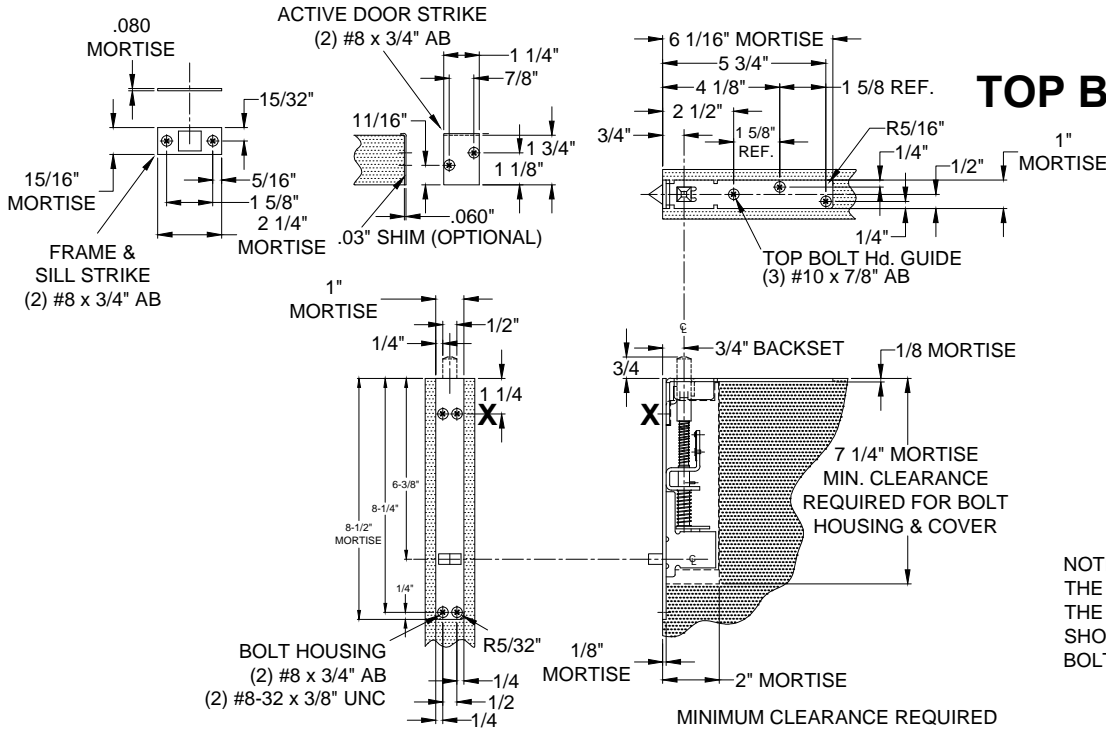
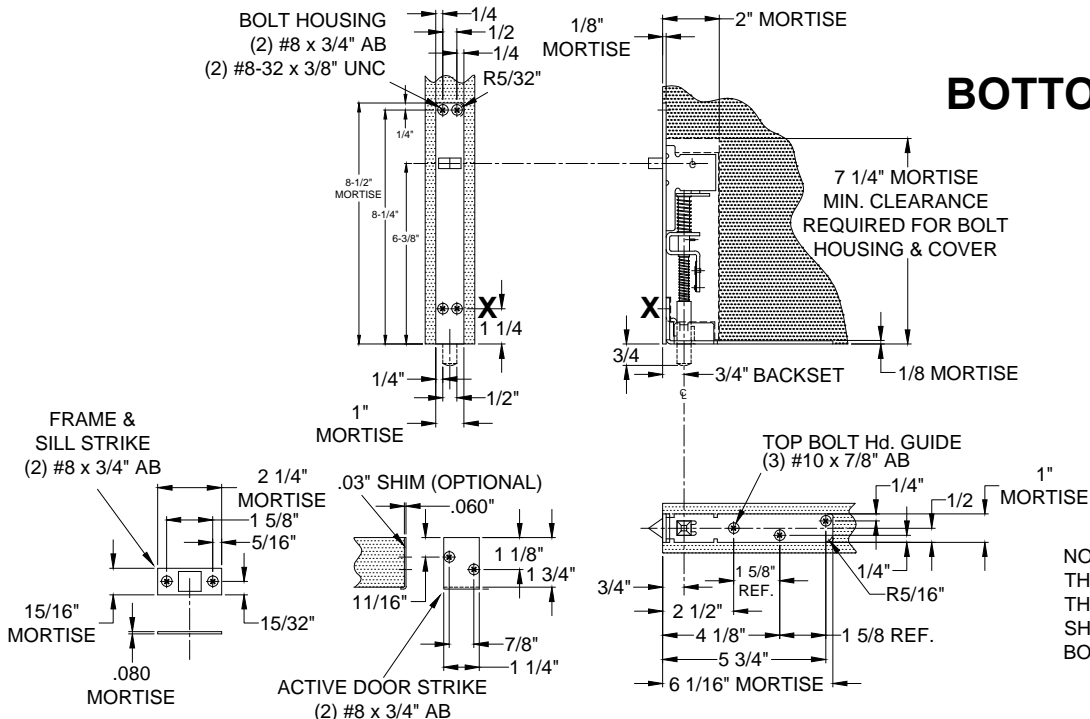


# 1862P AUTOMATIC FLUSH BOLT SET TOP & BOTTOM BOLTS, WOOD DOOR APPLICATION



**SCREW DETAILS:**

- #8 - 32 x 3/8" UNC - FLAT COUNTERSUNK HEAD MACHINE SCREW, TOTAL 2 PCS.
- #8 - 32 x 3/4" AB - UNDERCUT FLAT COUNTERSUNK HEAD, DUAL PURPOSE MACHINE/TAPPING SCREW, TOTAL 6 PCS.
- #10 - 32 x 3/4" AB - FLAT COUNTERSUNK HEAD TAPPING SCREW, TOTAL 3 PCS.



**SCREW DETAILS:**

- #8 - 32 x 3/8" UNC - FLAT COUNTERSUNK HEAD MACHINE SCREW, TOTAL 2 PCS.
- #8 - 32 x 3/4" AB - UNDERCUT FLAT COUNTERSUNK HEAD, DUAL PURPOSE MACHINE/TAPPING SCREW, TOTAL 6 PCS.
- #10 - 32 x 3/4" AB - FLAT COUNTERSUNK HEAD TAPPING SCREW, TOTAL 3 PCS.



www.abhmfg.com  
E-mail: abhinfo@abhmfg.com  
Architectural Builders Hardware Mfg., Inc.  
1222 Ardmore Ave., Itasca, IL 60143  
630.875.9900; FAX 800.9FAXABH (932.9224)

©2017 ABH Mfg., Inc.  
printed in USA

1862P

PAGE 1 OF 1  
ISSUED 01-20-17