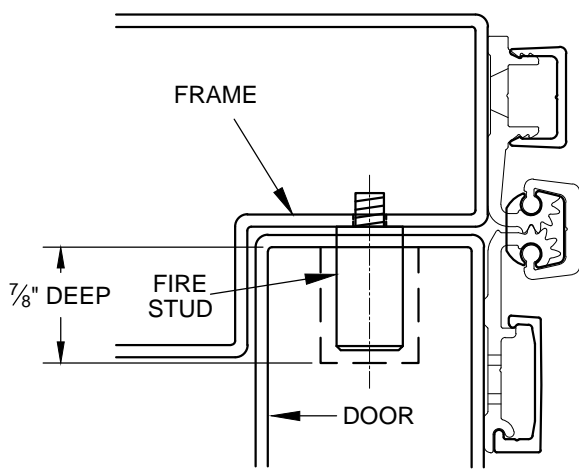


UL FIRE RATED STUDS FOR INSTALLATION FULL SURFACE ALUMINUM GEARED HINGES A210HD, A570HD & A571HD

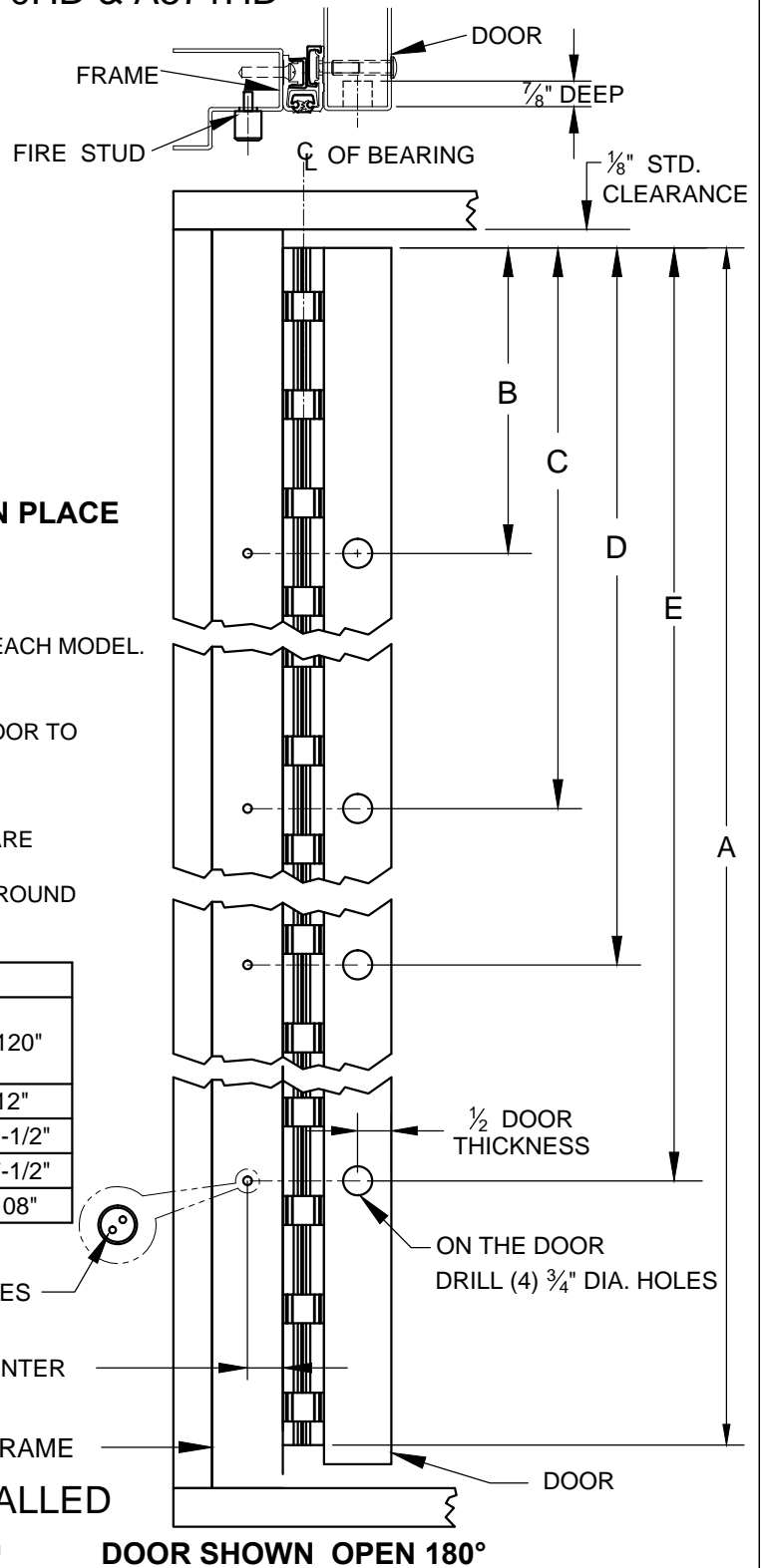


**DOOR SHOWN CLOSED WITH FIRE STUD IN PLACE
USING MODEL A570HD HINGE**

NOTES:

1. INSTALL HINGE PER INSTALLATION INSTRUCTIONS FOR EACH MODEL.
2. FOR THE FRAME SIDE - DRILL AND TAP (4) 12-24 HOLES FOR FIRE STUDS.
3. FOR THE DOOR SIDE - DRILL (4) 3/4" DIA. HOLES IN THE DOOR TO CORRESPOND TO THE STUD HOLES IN THE FRAME SIDE.
4. INSERT STUDS IN THE FOUR (4) TAPPED FRAME HOLES, TIGHTEN SECURELY.
5. SLOWLY CLOSE DOOR MAKING SURE THAT THE STUDS ARE PROPERLY ALIGNED.
6. MINOR INTERFERENCE CAN BE TAKEN CARE OF WITH A ROUND METAL FILE.

| DIMENSION | | | | | |
|------------------------|---------|---------|---------|---------|---------|
| "A" HINGE LENGTH | 79" | 83" | 85" | 95" | 120" |
| "B" | 12" | 12" | 12" | 12" | 12" |
| "C" | 25-3/8" | 27-3/8" | 28-3/8" | 32-3/8" | 42-1/2" |
| "D" | 53-5/8" | 55-5/8" | 56-5/8" | 62-5/8" | 77-1/2" |
| "E" | 67" | 71" | 73" | 83" | 108" |



ON THE FRAME, DRILL AND TAP (4)12-24 HOLES

1/2 DOOR THICKNESS + 1/32" FROM CENTER OF HOLE TO EDGE OF FRAME

1/2 DOOR THICKNESS

ON THE DOOR DRILL (4) 3/4" DIA. HOLES

**ALL FOUR (4) STUDS MUST BE INSTALLED
TO COMPLY WITH U.L. RATING**

DOOR SHOWN OPEN 180°

FIRE STUD - FULL SURFACE - 01.DWG



www.abhmfg.com
 E-mail: abhinfo@abhmfg.com
 Architectural Builders Hardware Mfg., Inc.
 1222 Ardmore Ave., Itasca, IL 60143
 630.875.9900; FAX 800.9FAXABH (932.9224)

©2016 ABH Mfg., Inc.
printed in USA

**FIRE STUD -
FULL SURFACE**

PAGE 1 OF 1
REVISED 10-05-16