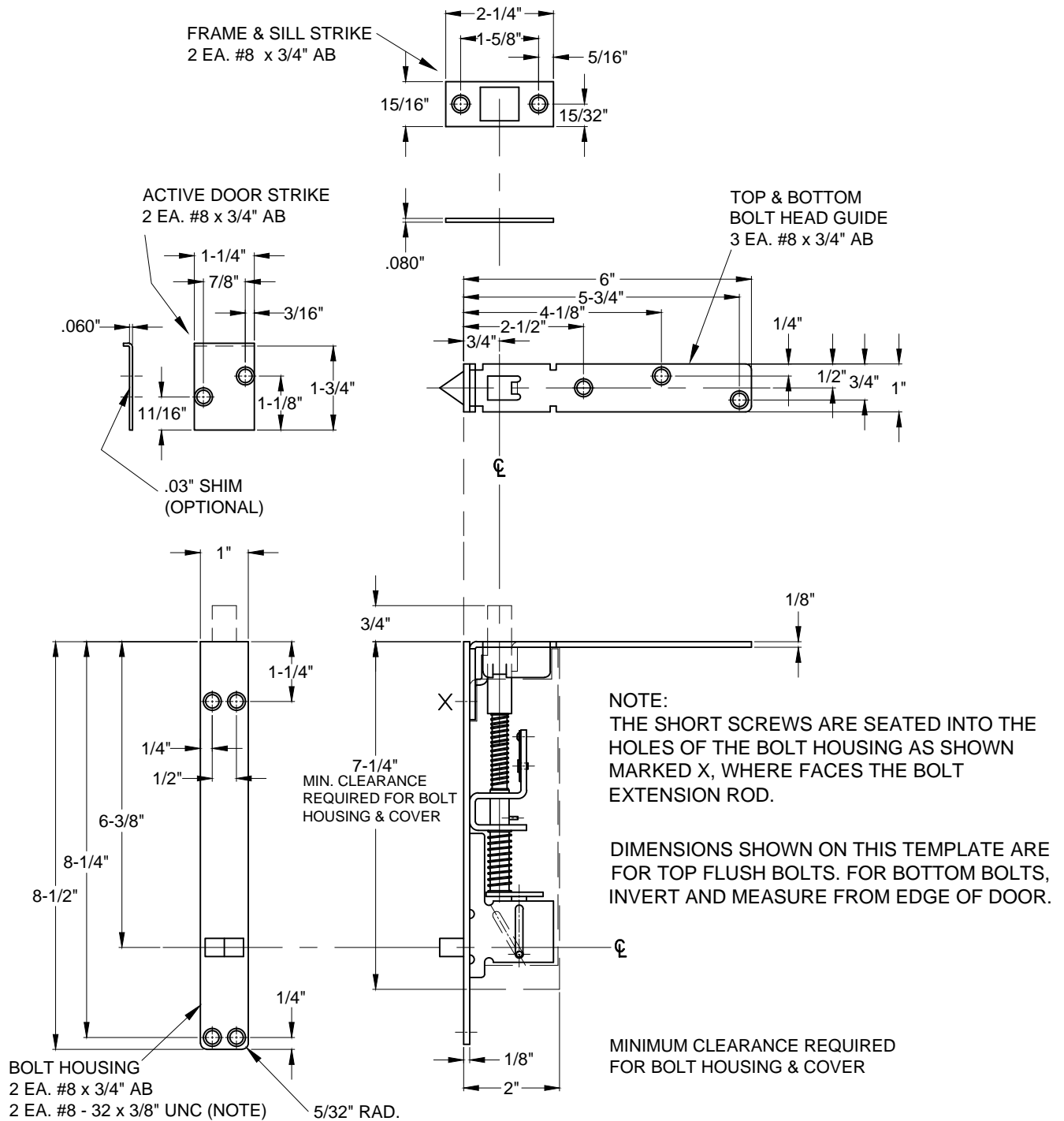


1862 AUTOMATIC FLUSH BOLTS WOOD DOOR APPLICATION



SCREW DETAILS: #8 - 32 x 3/8" UNC - FLAT COUNTERSUNK HEAD MACHINE SCREW, TOTAL 2 PCS.
 #8 - 32 x 3/4" AB - UNDERCUT FLAT COUNTERSUNK HEAD, DUAL PURPOSE MACHINE/TAPPING SCREW, TOTAL 6 PCS.
 #10 - 32 x 3/4" AB - FLAT COUNTERSUNK HEAD TAPPING SCREW, TOTAL 3 PCS.



® www.abhmfg.com
 E-mail: abhinfo@abhmfg.com
 Architectural Builders Hardware Mfg., Inc.
 1222 Ardmore Ave., Itasca, IL 60143
 630.875.9900; FAX 800.9FAXABH (932.9224)

©2011 ABH Mfg., Inc.
 printed in USA

1862-02.DWG

1862

PAGE 1 OF 1
 REVISED 01-10-11