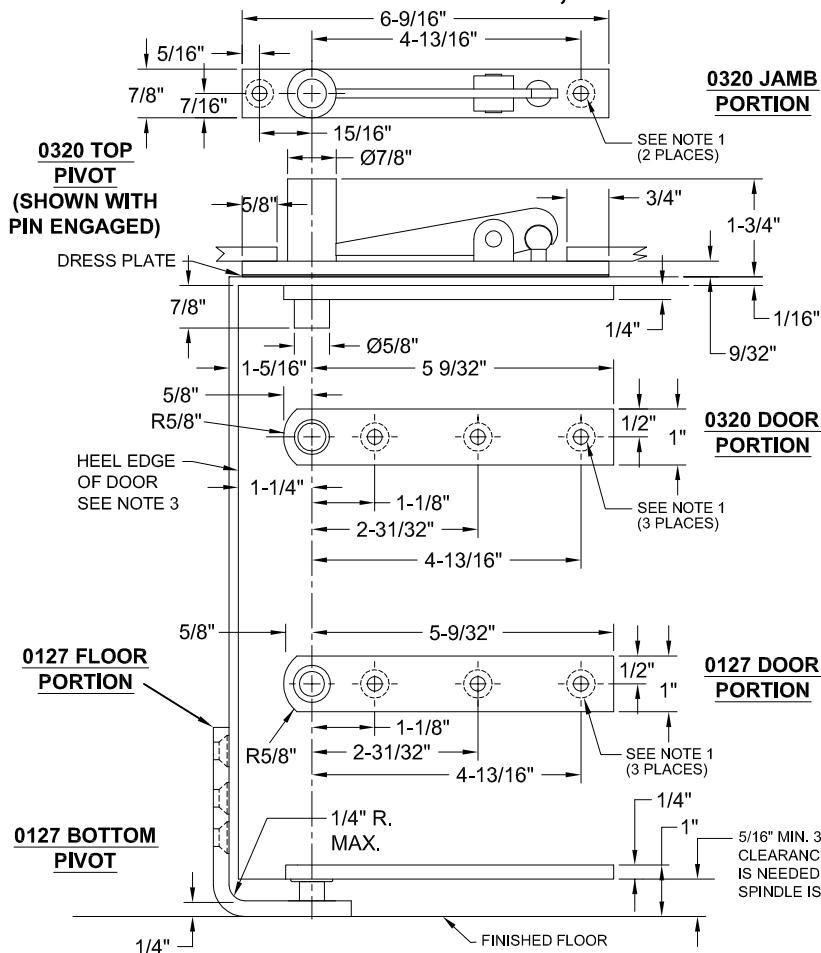
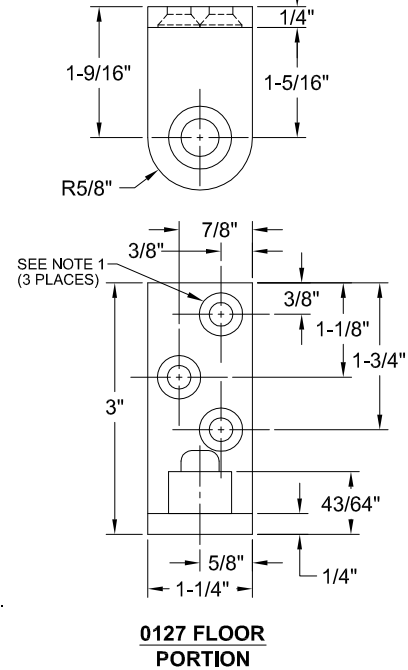


0127 PIVOT SET, CENTER HUNG, NON-HANDED



NOTES:

- PIVOTS DRILLED FOR 1/4-20 x 3/4" FHMS OR #14 x 1-1/2" FHWS
- REINFORCING BY OTHERS.
- RADIUS HEEL EDGE OF DOOR 1-1/4" MAX FOR 1-3/8" TO 2-1/2" THICK DOORS.
- IT IS THE DOOR AND FRAME MANUFACTURERS RESPONSIBILITY TO CHECK THE HARDWARE SCHEDULE AND PREP THE DOORS AND FRAMES.
- CENTERLINE OF TOP PIVOT PIN MUST BE PLUMB AND STRAIGHT WITH BOTTOM PIVOT.

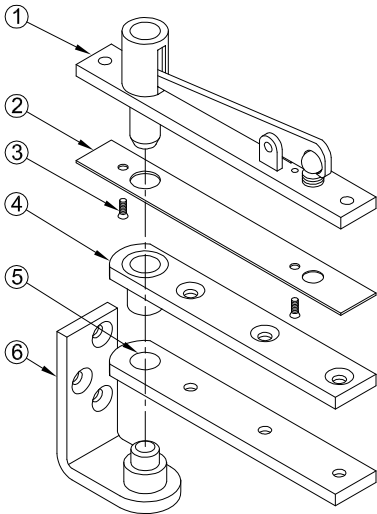
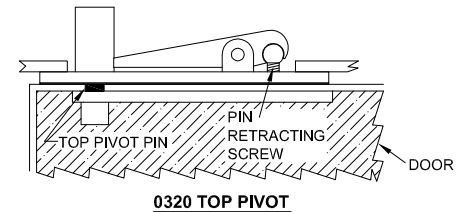
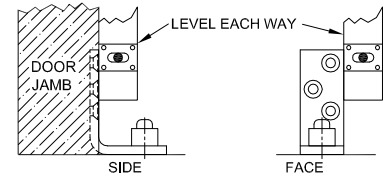
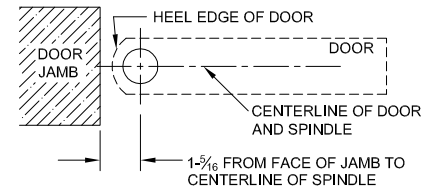


INSTALLATION INSTRUCTIONS

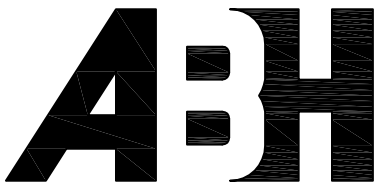
- MEASURE 1-5/16" OUT FROM DOOR JAMB ON CENTERLINE OF DOOR. THIS IS THE LOCATION OF SPINDLE CENTER.
- ROUND HEEL EDGE AND PREPARE DOOR FOR 1/16" MIN. CLEARANCE THRU ENTIRE OPENING.
- INSTALL 0127 DOOR PORTION PER TEMPLATE.
- MORTISE JAMB AND INSTALL 0127 FLOOR PORTION PER TEMPLATE.
- INSTALL 0320 DOOR PORTION PER TEMPLATE.
- INSTALL 0320 JAMB PORTION PER TEMPLATE.
- CENTERLINE OF PIVOT SHOULD ALIGN WITH CENTERLINE OF BOTTOM SPINDLE. USE A PLUMB LINE TO ASSURE ACCURACY.
- SET INSTALLED 0127 DOOR PORTION ON 0127 FLOOR PORTION SPINDLE.
- ENGAGE THE TOP PIVOT PIN BY TURNING PIN RETRACTING SCREW CLOCKWISE.
- FASTEN 0320 DRESS PLATE TO 0320 JAMB PORTION.

DISMOUNT DOOR (IF REQUIRED)

- OPEN THE DOOR ENOUGH TO DISENGAGE THE TOP PIVOT.
- ROTATE THE DOOR TO CLOSED POSITION.
- WITH THE TOP OF THE DOOR LEANING TOWARD YOU, LIFT THE DOOR CLEAR OF THE SPINDLE.



| ITEM NO. | QTY. | PART NO. |
|----------|------|------------------------|
| 1 | 1 | 0320 JAMB PORTION |
| 2 | 1 | 0320 DRESS PLATE |
| 3 | 2 | 0320 DRESS PLATE SCREW |
| 4 | 1 | 0320 DOOR PORTION |
| 5 | 1 | 0127 DOOR PORTION |
| 6 | 1 | 0127 JAMB PORTION |



www.abhmfg.com
 E-mail: abhinfo@abhmfg.com
 Architectural Builders Hardware Mfg., Inc.
 1222 Ardmore Ave., Itasca, IL 60143
 630.875.9900; FAX 800.9FAXABH (932.9224)

© 2015 ABH Mfg., Inc.
 printed in USA

0127-06.DWG

0127

PAGE 1 OF 1

REVISED 04-21-15