

GEAR HINGE CONCEALED THRU WIRE 4" REMOVABLE SECTION ONLY ORDER FORM

ORDER DATE: _____
 CUSTOMER NAME: _____
 CUSTOMER P.O. No.: _____
 ABH SALES ORDER No.: _____
 HINGE PART NO.: _____ QUANTITY _____
 CUSTOMER SIGNATURE: _____ DATE: _____

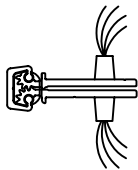
HINGE PART No. EXPLANATION: A*** R * *
 MODEL (110,111,240,260,270) _____
 REMOVABLE (4" HIGH) _____
 ALUMINUM FINISH: _____
 C = CLEAR ALUMINUM
 D = DARK BRONZE
 WIRE: _____
 4 = 4 THRU WIRES
 8 = 8 THRU WIRES

NOTE: WIRE COLORS ARE RED, GREEN, YELLOW & BLACK.
 WIRE SPECIFICATION: 30 AWG (0.05 SQ MM) SILVER COATED CU
 0.008" (.20MM) MIN AUG TEF INSULATION
 MIL-W-16878/4 200C 600V AWM STYLE 1213

4 THRU WIRE

MODEL A110RC4

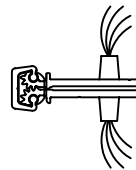
SHOWN FOR EXAMPLE
 WITH OUT MOUNTING HOLES



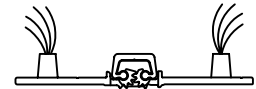
CLOSED
TOP VIEW



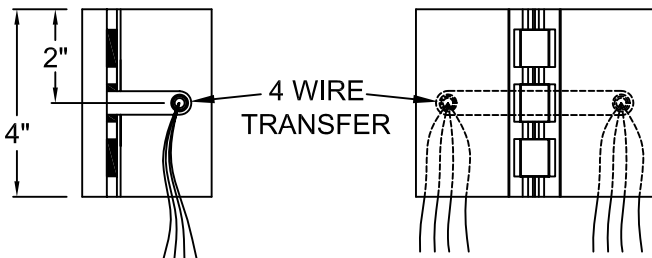
OPEN
TOP VIEW



CLOSED
TOP VIEW

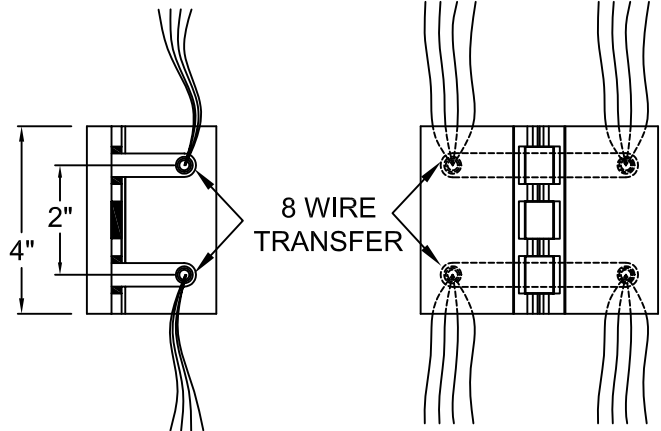


OPEN
TOP VIEW



CLOSED
SIDE VIEW

OPEN
FRONT VIEW



CLOSED
SIDE VIEW

OPEN
FRONT VIEW



www.abhmfg.com
 E-mail: abhinfo@abhmfg.com
 Architectural Builders Hardware Mfg., Inc.
 1222 Ardmore Ave., Itasca, IL 60143
 630.875.9900; FAX 800.9FAXABH (932.9224)

ABH is a minority
 owned and operated
 manufacturing company.

© 2004 ABH Mfg., Inc.
 printed in USA

GEAR HINGE CONCEALED THRU WIRE REMOVABLE
 SECTION ONLY ORDER FORM-01.DWG

4" REMOVABLE
 SECTION

ISSUED 08-17-04