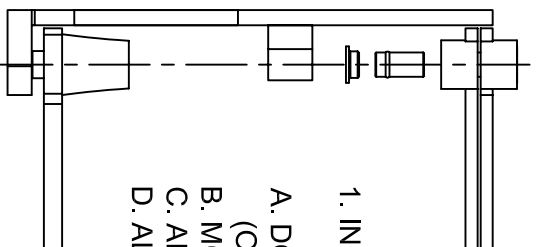


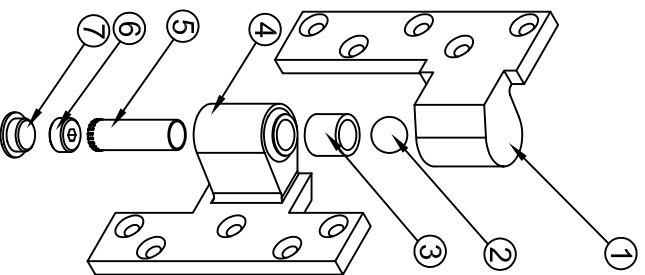


# L019 INTERMEDIATE PIVOTS FOR HEAVY OR LEADLINED 1 3/4" DOOR 3/4" OFFSET-HANDED

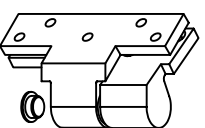


## 1. INSTALLATION INSTRUCTIONS

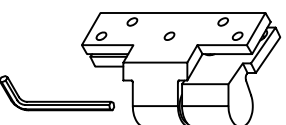
- A. DOOR SHOULD ALREADY BE HUNG WITH TOP PIVOT AND BOTTOM PIVOT (OR FLOOR CLOSER).
- B. MORTISE DOOR & FRAME PER TEMPLATE ON REVERSE SIDE.
- C. AFFIX PIVOT TO DOOR & FRAME.
- D. ALIGN PIVOT POINT FROM TOP PIVOT TO BOTTOM ARM. (SEE DIAGRAM)



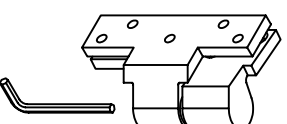
ITEM NO.	QTY.	PART NO.
1	1	L019 DOOR LEAF
2	1	L019 ALIGNMENT BALL
3	1	L019 NEEDLE BEARING
4	1	L019 JAMB LEAF
5	1	L019 PIVOT PIN
6	1	L019 RETAINER SCREW
7	1	L019 END CAP



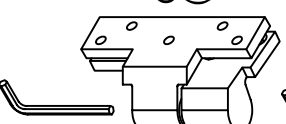
E. REMOVE END CAP. (ITEM #7)



F. TURN RETAINER SCREW (ITEM #6) CLOCKWISE. RAISE THE DOOR TO THE DESIRED HEIGHT.



G. TURN RETAINER SCREW (ITEM #6) COUNTERCLOCKWISE TO LOWER DOOR.



H. TIGHTEN RETAINER SCREW (ITEM #6) UNTIL YOU FEEL RESISTANCE. REPLACE END CAP (ITEM #7).

www.abhmtg.com

E-mail: [abhinfo@abhmtg.com](mailto:abhinfo@abhmtg.com)

Architectural Builders Hardware Mfg., Inc.

1222 Ardmore Ave., Itasca, IL 60143

630.875.9900; FAX 800.9FAXABH (932.9224)

ABH is a minority  
owned and operated  
manufacturing company.

©2004 ABH Mfg., Inc.  
printed in USA

L019-2-00.DWG

# L019

ISSUED 02-16-04

# ABH