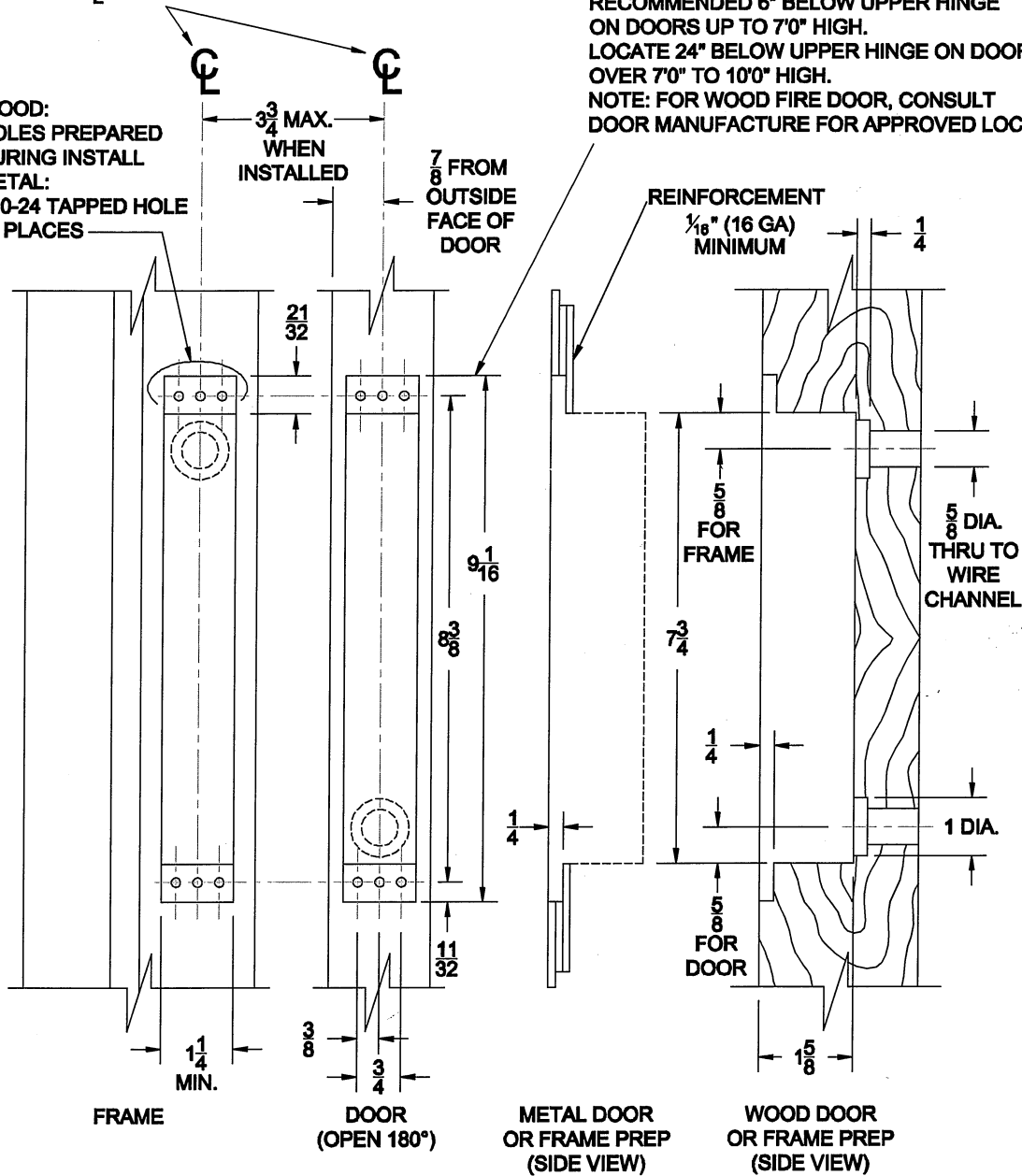


PT200 & PT1000 POWER TRANSFER INSTALLATION TEMPLATE

☉ OF PT IN FRAME MUST ALIGN
WITH ☉ OF PT IN DOOR

WOOD:
HOLES PREPARED
DURING INSTALL
METAL:
#10-24 TAPPED HOLE
12 PLACES

RECOMMENDED 6" BELOW UPPER HINGE
ON DOORS UP TO 7'0" HIGH.
LOCATE 24" BELOW UPPER HINGE ON DOORS
OVER 7'0" TO 10'0" HIGH.
NOTE: FOR WOOD FIRE DOOR, CONSULT
DOOR MANUFACTURE FOR APPROVED LOCATION.



ELECTRICAL RATINGS

PT200	(2) 18 AWG WIRES-MAX. RATING 24VDC, 5A OR 120VAC NEC CLASS 3
PT1000	(10) 24 AWG WIRES-MAX. RATING 24VDC, 1A

SCALE: FULL

PT200 & PT1000-01.DWG



www.abhmfg.com

E-mail: abhinfo@abhmfg.com

Architectural Builders Hardware Mfg., Inc.

1222 Ardmore Ave., Itasca, IL 60143

630.875.9900; FAX 800.9FAXABH (932.9224)

PT200 & PT1000

© 2010 ABH Mfg., Inc.
printed in USA

ISSUED 03-22-10