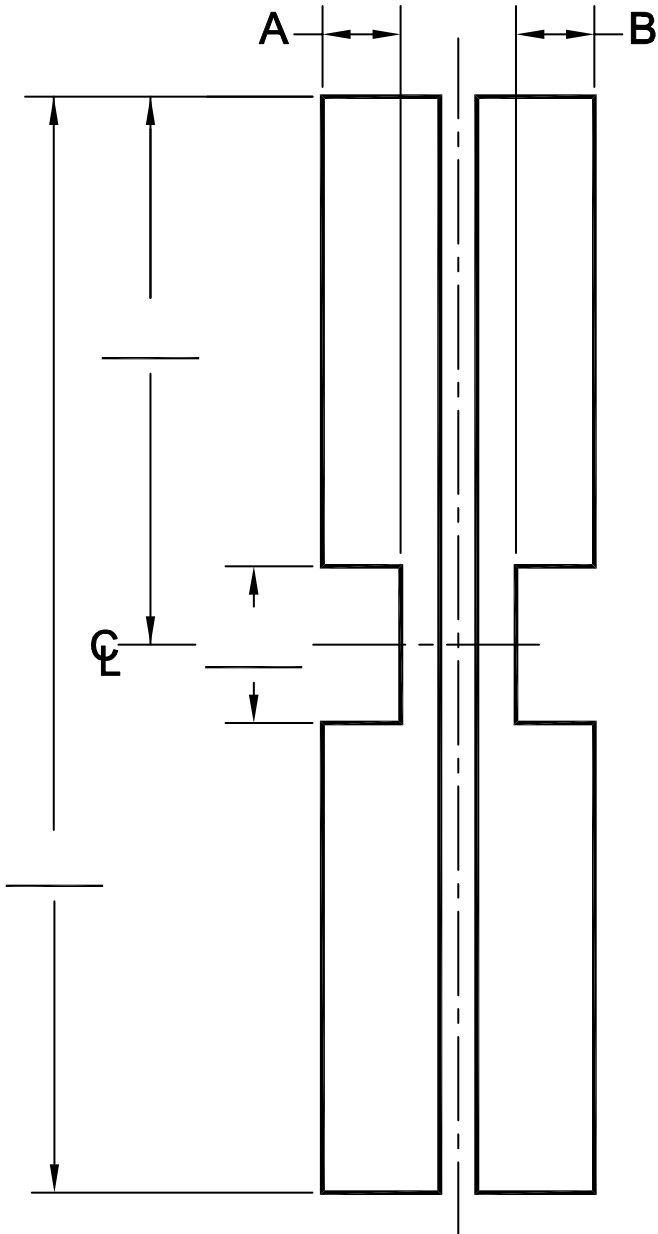


# POWER TRANSFER ORDER FORM

STANDARD/HEAVY DUTY AND LEAD LINED  
ALUMINUM GEAR HINGE CUTOUT

S/O # \_\_\_\_\_  
 GEAR HINGE P/N \_\_\_\_\_  
 HAND \_\_\_\_\_  
 DATE DUE \_\_\_\_\_ QUANTITY \_\_\_\_\_  
 CUSTOMER SIGNATURE \_\_\_\_\_ DATE \_\_\_\_\_

ABH MODEL	FRAME	A	DOOR	B
A110	ARB1	1.500	ARB2	1.500
A111	ARB8	1.790	ARB17	1.500
A211	ARB18	1.750	ARB5	NO CUT
A213	ARB21	1.250	ARB5	NO CUT
A240	ARB8	1.790	ARB7	1.750
A260	ARB1	1.250	ARB14	1.530
A270	ARB13	1.530	ARB14	1.530
A450	ARB1	1.500	ARB5	NO CUT
A460	ARB8	1.790	ARB5	NO CUT
A530	ARB1	1.500	ARB11	NO CUT
A540	ARB8	1.790	ARB11	NO CUT
A550	ARB21	1.250	ARB11	NO CUT



MANUFACTURER	POWER TRANSFER PART NO.	CUT OUT
ABH	PT105 (SQ. END)	11.500
	PT180 (SQ. END)	20.188
	PTR105 (RAD. END)	11.500
	PTR180 (RAD. END)	20.188
ADAM-RITE	4611 (SQ. END)	11.562
	4611 (SQ. END)	20.218
	4612 (RAD. END)	12.781
	4612 (RAD. END)	21.453
MARKAR	MARKAR CALLS OUT VON DUPRIN CUTOUT	-----
VON DUPRIN	EPT2, EPT10 & PNT1	9.125
RCI	9512 OLD STYLE (SQ. END)	11.562
	9513 OLD STYLE (SQ. END)	20.125
	9512 NEW STYLE (RAD. END)	12.812
	9513 NEW STYLE (RAD. END)	21.500

BRAND NAMES ARE TRADEMARKS OR REGISTERED TRADEMARKS OF THEIR REPECTIVE COMPANIES.



® [www.abhmfg.com](http://www.abhmfg.com)  
 E-mail: [abhinfo@abhmfg.com](mailto:abhinfo@abhmfg.com)  
 Architectural Builders Hardware Mfg., Inc.  
 1222 Ardmore Ave., Itasca, IL 60143  
 630.875.9900; FAX 800.9FAXABH (932.9224)

POWERTRANSFERORDERFORM-05.DWG

POWER  
TRANSFER  
ORDER FORM  
REVISED 04-27-10

©2010 ABH Mfg., Inc.  
printed in USA