

**Heavy-duty overhead door holder and stop for exterior, vestibule or interior doors, either single or double acting**

**Now available  
US32D & US32**

**1000 ADJ SERIES  
CONCEALED**



**WHEN ORDERING,  
please list:**

*Model number*

*Door closer number or other hardware*

*Mounting means of the door and butt size*

*Hold-open or dead-stop degree*

*Door opening and thickness*

*Finish*

**STANDARD FEATURES**

- For All Stainless Steel Components - Prefix N
- Non-handed/reversible
- Single point hold-open is field adjustable from from 85° to 110°
- Hold-open knob can be disengaged to act as a stop only
- 5° to 7° shock compression following hold-open point
- Steel shock absorbing spring
- Die cast end block and shock block
- Maximum opening 110°, minimum door thickness 1 3/4"
- Both wood and machine screws included
- Available in all BHMA plated and sprayed finishes

**All Stops  
Warnock Hersey  
listed**

**SPECIFICATIONS:**

**Stop only function to be Warnock Hersey listed as manufactured by ABH.**

*Material:  
steel/stainless steel channel  
3/32" thick and 1 1/8" depth;  
arm 1/4" thick and 1" wide;  
jamb track 1 1/4" wide; sliding  
block shall have easy access  
for tension adjustment.*

DOOR FRAME OPENING	HOLDER NUMBER		
	HOLD-OPEN	STOP	FRICTION
BUTTS OFFSET PIVOTS			
27" - 29 15/16"	1011A	1021A	1031A
30" - 35 15/16"	1012A	1022A	1032A
36" - 39 15/16"	1013A	1023A	1033A
40" - 43 15/16"	1014A	1024A	1034A
44" + Greater	1015A	1025A	1035A
BHMA NUMBER	C01511	C01541	C01531
FED. SPEC TYPE	1160	—	—

Contact ABH for special templating or other door opening  
Average weight/unit 6 lbs.

**www.abhmfg.com**  
**E-mail: abhinfo@abhmfg.com**  
**Architectural Builders Hardware Mfg., Inc.**  
 1222 Ardmore Ave., Itasca, IL 60143  
**630.875.9900; FAX 800.9FAXABH (932.9224)**

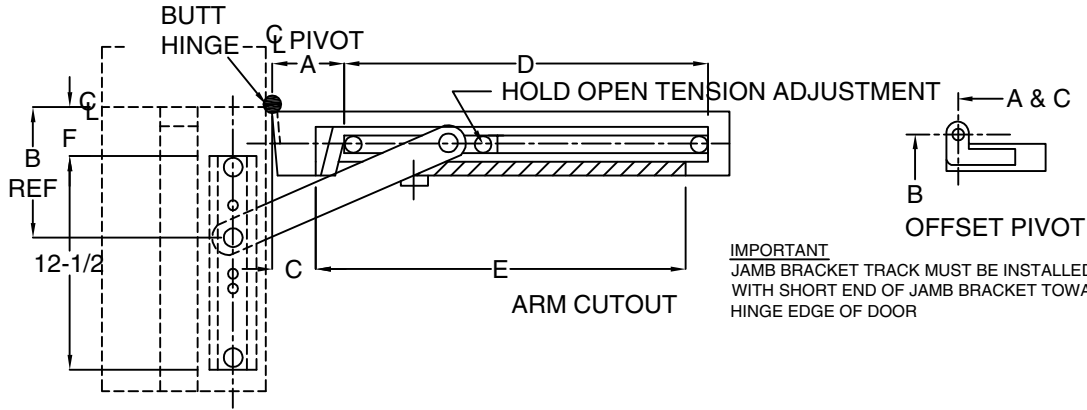
© 2005 ABH Mfg., Inc.  
Printed in USA 02/05



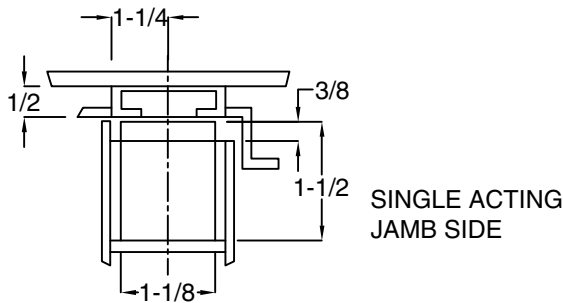
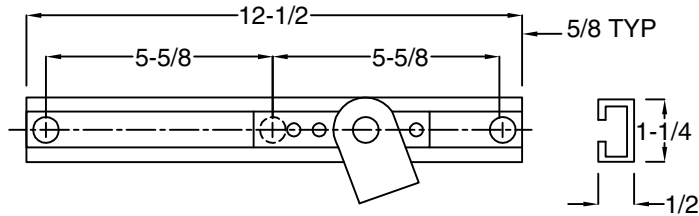
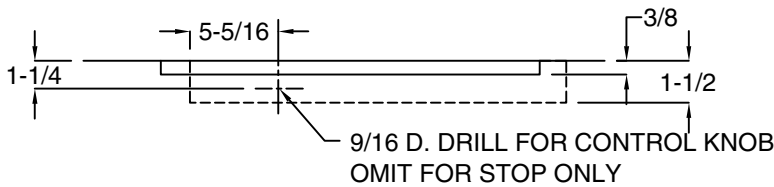
REVERSIBLE

1000 ADJ SERIES CONCEALED HOLDERS & STOPS

NON - HANDED



**IMPORTANT**  
JAMB BRACKET TRACK MUST BE INSTALLED WITH SHORT END OF JAMB BRACKET TOWARD HINGE EDGE OF DOOR



AFTER INSTALLATION TIGHTEN THREE (3) ALLEN HEAD SET SCREWS IN JAMB BRACKET AT SELECTED DEGREE USING "B" DIMENSIONS AS REFERENCE AND 5/32 ALLEN WRENCH.

NOTE: A, B, & C DIMENSIONS MEASURED AS SHOWN

SCREW DETAIL			
	QTY	WOOD	METAL
JAMB	3	No.14 x 1-1/2" F.H.W.S	1/4" -20X3/4" F.H.M.S.
DOOR	2	No.18 x 2-1/2" F.H.W.S	5/16-18 X 1-1/2" F.H.M.S.

ALWAYS REQUEST LATEST TEMPLATE DRAWINGS FOR NEW INSTALLATIONS

DO NOT SCALE DRAWINGS  
ALL DIMENSIONS ARE IN INCHES

**www.abhmfg.com**  
**E-mail: abhinfo@abhmfg.com**  
**Architectural Builders Hardware Mfg., Inc.**  
 1222 Ardmore Ave., Itasca, IL 60143  
**630.875.9900; FAX 800.9FAXABH (932.9224)**

© 2005 ABH Mfg., Inc.  
Printed in USA 02/05

