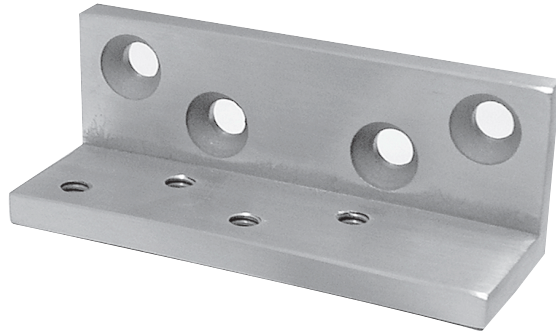


ANGLE JAMB BRACKETS



- Used to change standard surface mounted overhead holders to flush transom or hinge side mounted. Attaches to standard jamb bracket.
- **44443 for 4400 & 3300A**
- **70377 for 7000 flush transom only**
- **90541 for 8000 (hold open or stop flush transom, stop only hinge side) and 9000**
- Available in all BHMA finishes