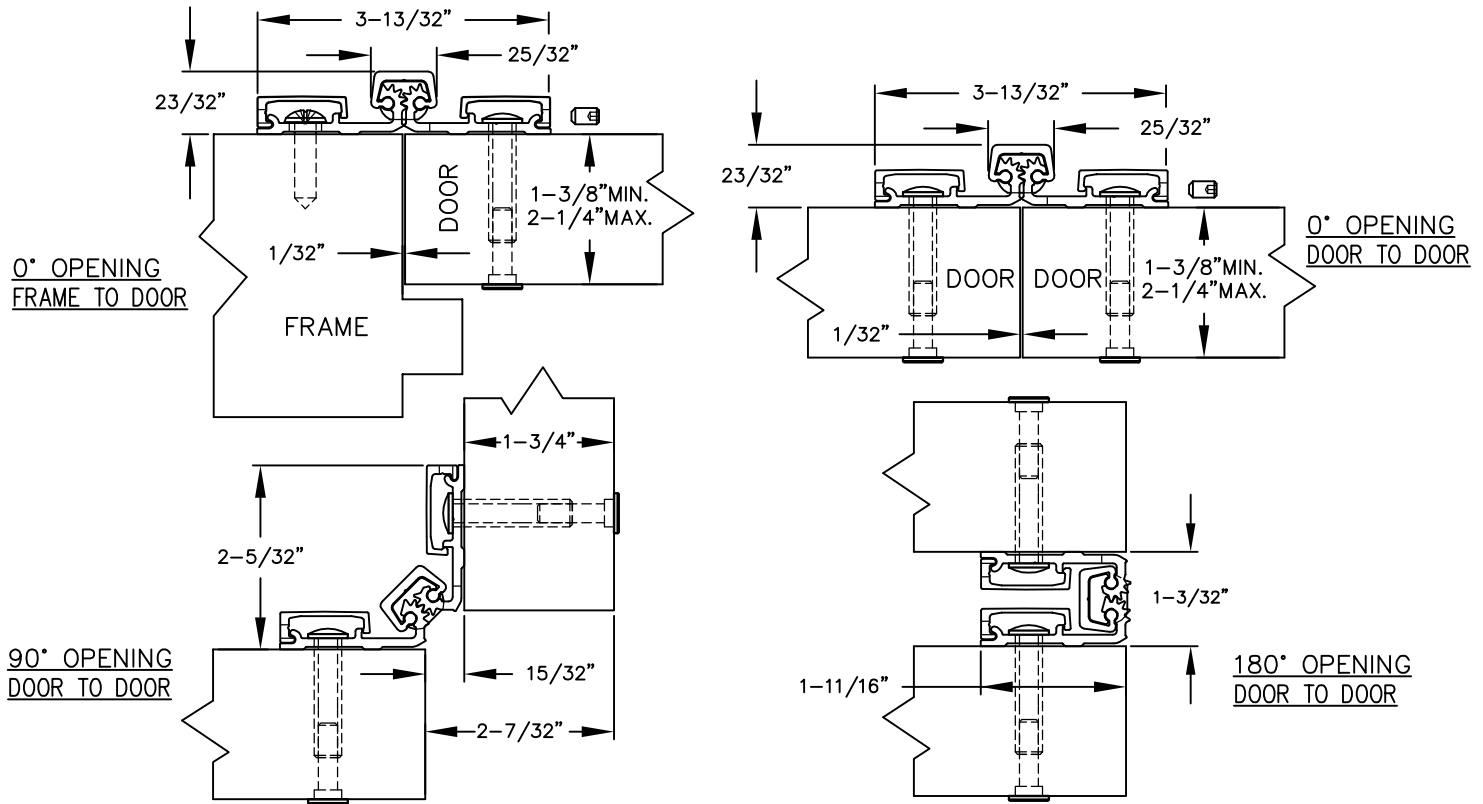
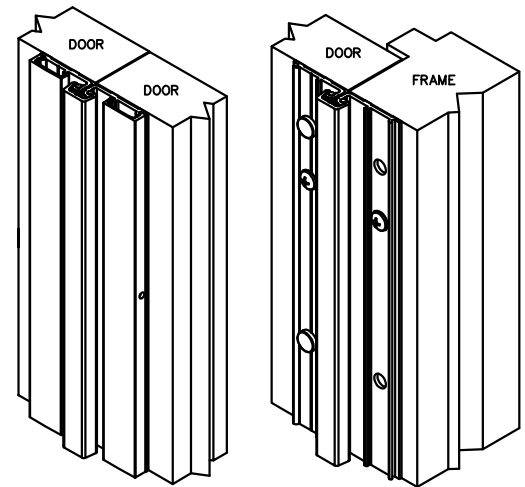


# A571 SERIES

FULL SURFACE, FRAME TO DOOR OR DOOR TO DOOR STANDARD/HEAVY DUTY



- >> MATERIAL: EXTRUDED 6063-T6 ALUMINUM ALLOY WITH POLYACETAL THRUST BEARINGS
- >> COLOR: 30 MINUTE CLEAR ANODIZED AND 2-STEP DARK BRONZE ANODIZED
- >> CUSTOM HOLE LOCATIONS: HOLE SIZES & LOCATIONS PER CUSTOMER SPECIFICATIONS.
- >> DOOR TYPE: FOR 2-1/4" DOORS MAX, STANDARD HEAVY DUTY UP TO 450 LBS. 7/8" MIN. FRAME
- >> DOOR REINFORCEMENT: NONE REQUIRED.
- >> FRAME REINFORCEMENT: OVER 200 LBS. REINFORCE WITH 16 GA. CHANNEL.
- >> SPECIAL FEATURES: FOR USE WITH FLUSH ALUMINUM, GLASS RAIL HOLLOW METAL OR WOOD DOORS.
- >> HINGE KING: TEMPLATED AND HOLE PATTERN IS THE SAME FROM HINGE TO HINGE.
- >> HANDING: HINGE IS NON-HANDED UNLESS CUT IN THE FILED.
- >> FIRE RATING: UL LISTED FOR UP TO 3 HOUR RATED DOORS WITH USE OF A STEEL STUD.
- >> SCREW DETAIL: 12-24 X 7/8" PHILLIPS PAN HEAD SELF DRILLING THREAD FORMING TEK SCREW & 1/4-20 X 1-9/16L X 3/8 DIA. SEX-BOLT WITH 1/4-20 X 1" PH. HEAD SHOULDER SCREWS, FOR THE DOOR.



ABH MODEL NUMBER	LENGTH		SCREW COUNT			
			FRAME TO DOOR		DOOR TO DOOR	
	INCHES	CENTIMETERS	# FOR FRAME	# FOR DOOR	# FOR DOOR 1	# FOR DOOR 2
A571HD83 (STD/HD)	83	210.8	14	14	14	14
A571HD85 (STD/HD)	85	215.9	14	14	14	14
A571HD95 (STD/HD)	95	241.3	15	15	15	15
A571HD120 (STD/HD)	120	304.8	18	18	18	18



www.abhmfg.com  
 E-mail: abhinfo@abhmfg.com  
 Architectural Builders Hardware Mfg., Inc.  
 1222 Ardmore Ave., Itasca, IL 60143  
 630.875.9900; FAX 800.9FAXABH (932.9224)

A571HD-02.DWG

© 2011 ABH Mfg., Inc.  
 printed in USA

**A571HD**  
 REVISED 01-31-11