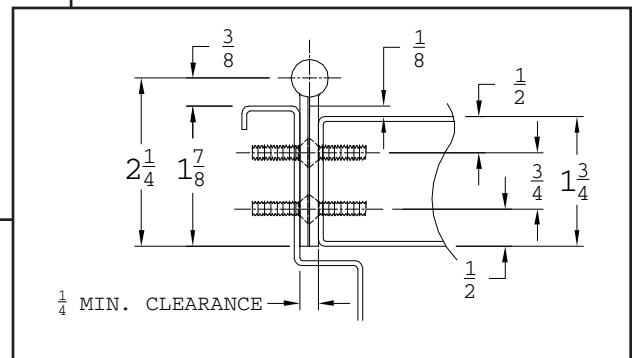


A500 Edge Mount Concealed



- For beveled or square edged doors
- For 1-3/4" doors
- For high traffic, high abuse doors
- Heavy-duty 14 Gauge 304 Stainless Steel
- US32D Satin Stainless Steel
- No exposed fasteners when door is closed
- Self drilling screws
- Supports door weights up to 600 lbs.
- 4'0" Maximum door width
- Electrical modifications available
- UL & ULC fire listed



Standard Options

- Hospital Tip- Suffix "HT"
- Dutch Door- Suffix "DD"
- Security Fasteners (Pin-in-Torx)
- Welded End Pins
- Security Studs
- Sizes: 6' 8", 7' 0", 7' 2", 8' 0", 10' 0"
- Custom Lengths- Specify Length
- Custom Powder Coated Finishes

Electrical Options

- Power Transfer Prep- Suffix "PT"
- Concealed Thru Wire
 - (2) 18ga. Wire
 - (4) 28ga. Wire
 - (8) 28ga. Wire
- Electrical Access Prep- Suffix "M"-Moveable Section
- Expose Monitoring Switch- Suffix "ES"

Fire Rating- UL and ULC fire Listed
3 hours-hollow metal door
90 min.-hollow metal and composite core wood fire door
20 min.-wood door

CROSS REFERENCE

ABH	Markar	Roton	Stanley	Ives
A500	FM300	790-900	651HD	700

* Brand names are trademarks or registered trademarks of their respective companies. It is not assured nor suggested that any two products are exactly the same. The assessment of which products are most similar comes from information provided by trade sources.