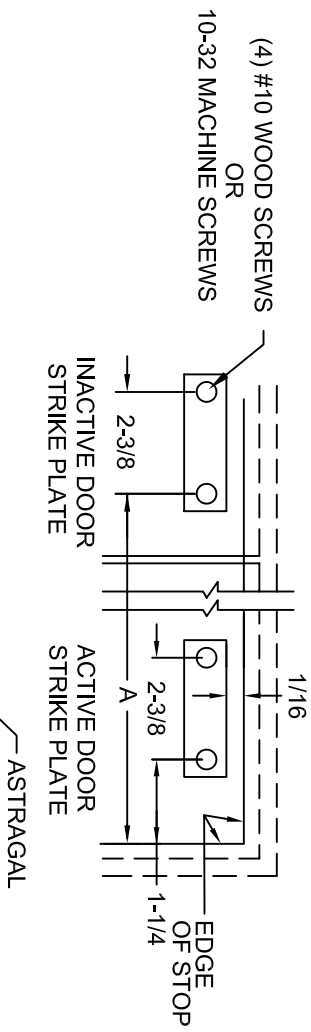
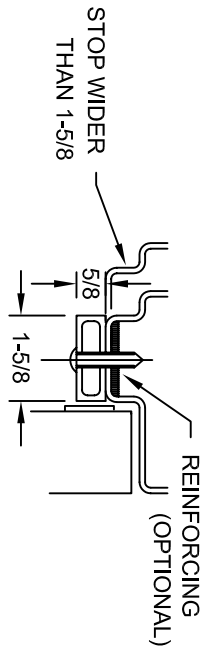
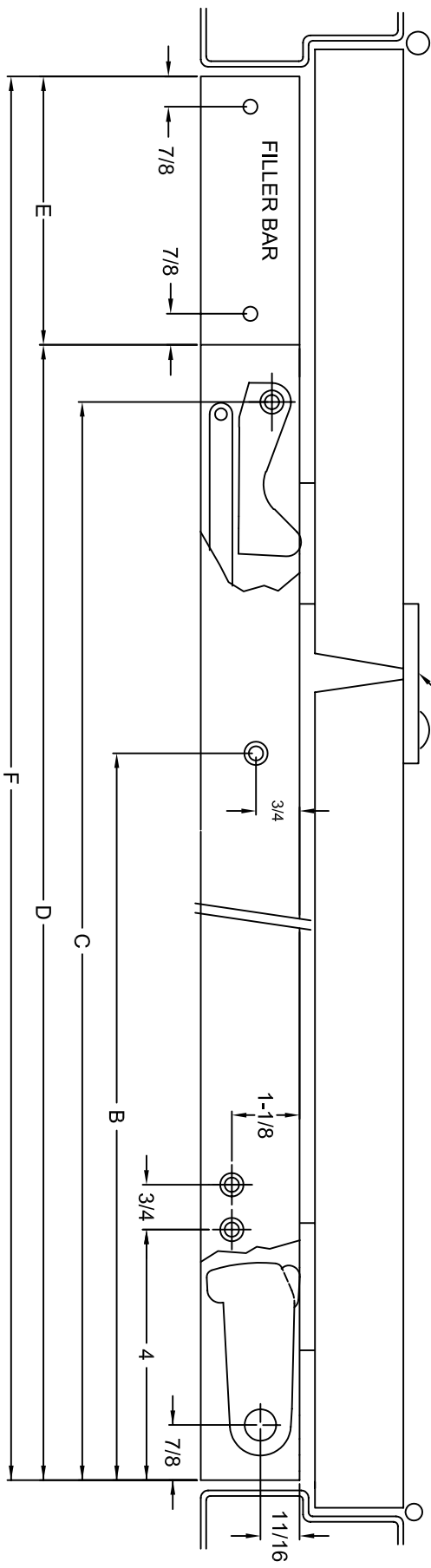


3700 SERIES COORDINATORS

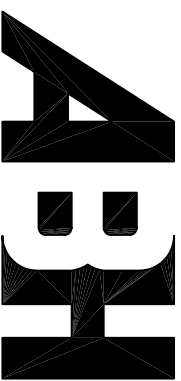
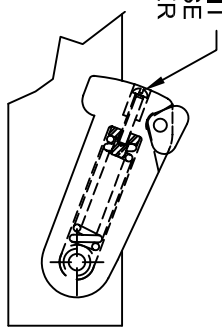
1. CLOSE DOOR AGAINST STOP. LOCATE ACTIVE & INACTIVE DOOR STRIKES AS SHOWN BELOW.
2. LOCATE COORDINATOR AS SHOWN BELOW. INSTALL COORDINATOR WITH (1) 10-32 M.S. OR #10 WOOD SCREW TO HOLD 3700 IN POSITION BEFORE DRILLING OTHER HOLES.
3. IF REQUIRED, INSTALL FILLER BAR IN GAP BETWEEN END OF COORDINATOR AND INACTIVE DOOR STOP.



| HOUSING LENGTH | DIMENSIONS IN INCHES | | | | |
|----------------|----------------------|--------|----|----|--------|
| | A | B | C | D | E |
| 32" (3710) | 27-1/2 | OMIT | 31 | 32 | VARIES |
| 52" (3720) | 47-1/2 | 27-5/8 | 51 | 52 | WITH |
| 60" (3730) | 55-1/2 | 27-5/8 | 59 | 60 | F DIM. |



LEVER TENSION ADJUSTMENT
TURN CLOCKWISE TO INCREASE
TENSION USING PHILLIPS HEAD SCREW DRIVER



www.abhmf.com
E-mail: abhinfo@abhmf.com
Architectural Builders Hardware Mfg., Inc.
1222 Ardmore Ave., Itasca, IL 60143
630.875.9900; FAX 800.9FAXABH (932.9224)

ABH is a minority owned and operated manufacturing company.
© 2004 ABH Mfg., Inc.
printed in USA

ISSUED 07-16-04
3700

3700ASY-1-00.DWG

3700 SERIES COORDINATORS

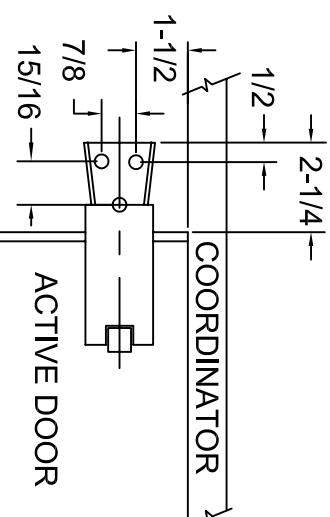
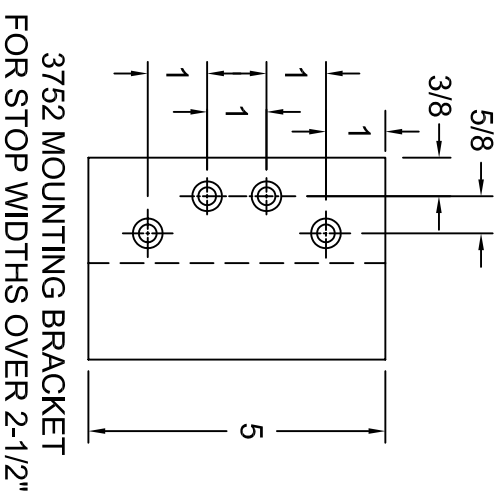
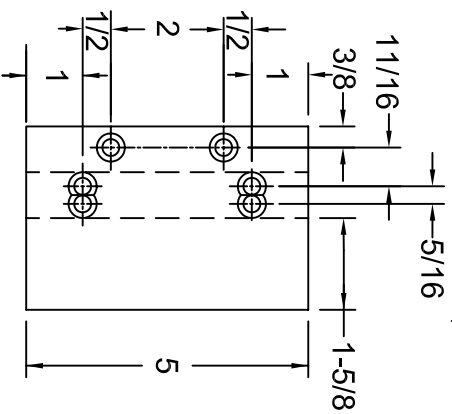
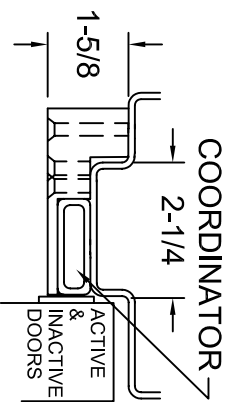
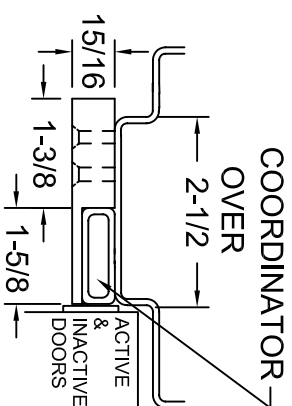
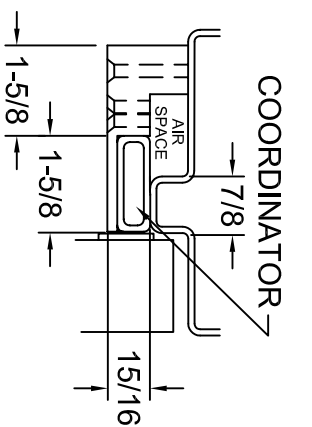
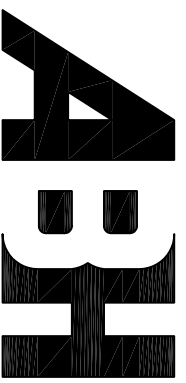


FIG. 3
DRILL FOR (3) 3/8" DIA. SEX BOLTS
3760 CARRY BAR
INSTALLATION

3751 MOUNTING BRACKET
FOR STOP WIDTHS UP TO 2-1/2"

MOUNTING BRACKETS FOR STOP APPLIED HARDWARE
BRACKETS MUST BE FIELD DRILLED AND TAPPED FOR STOP MOUNTED HARDWARE
INSTALL DOOR APPLIED HARDWARE 15/16" LOWER TO CLEAR COORDINATOR AND BRACKET.



www.abhmfg.com

E-mail: abhinfo@abhmf.com

Architectural Builders Hardware Mfg., Inc.

1222 Ardmore Ave., Itasca, IL 60143

630.875.9900; FAX 800.9FAXABH (932.9224)

© 2004 ABH Mfg., Inc.
printed in USA

3700ASY-2-00.DWG

3700

ISSUED 03-31-05