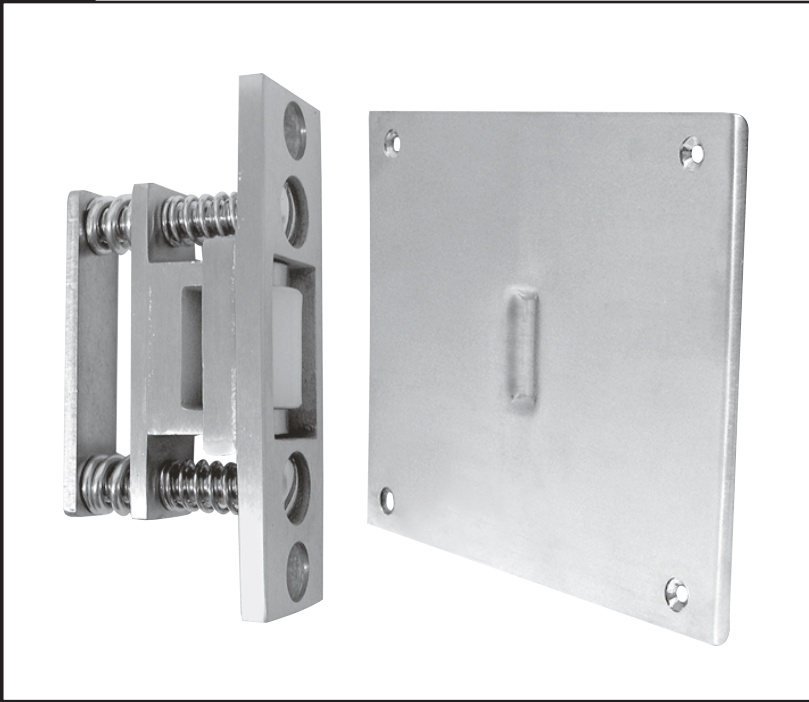


## 1890S Roller Latch with Custom Strike



### Standard Options

- *Custom Strike* for double acting doors
- Latch face 1" x 3-3/8"
- Fasteners

Body (2) #10 x 3/4" FH SMS

Strike #8 x 3/4" FH SMS

(Quantity determined by width)

- **Contact Factory for order form**