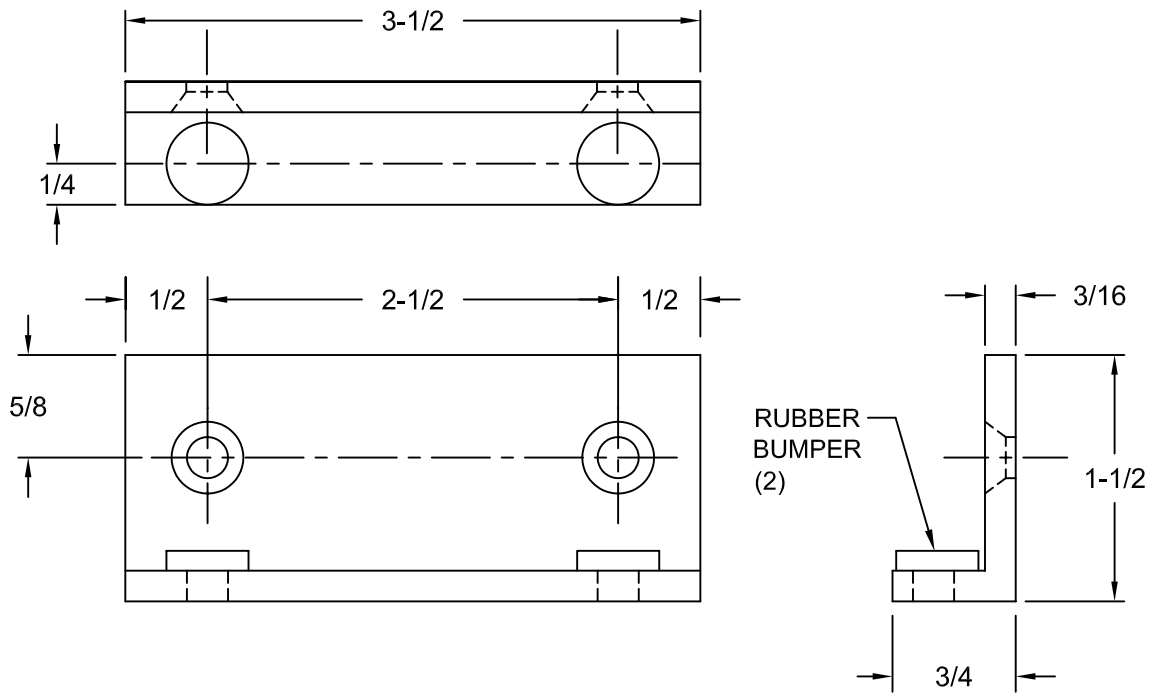


# 1801 APPLIED STOP

FOR USE WITH SINGLE OR PAIR DOORS WITHOUT STOP



### INSTALLATION:

1. PLACE STOP IN DESIRED LOCATION AND LOCATE MOUNTING HOLES.
2. PREPARE MOUNTING HOLES.
3. MOUNT STOP WITH (2) #12 X 1-1/2" F.H.W.S. OR (2) 12-24 X 3/4" F.H.M.S.



© www.abhmfg.com  
 E-mail: abhinfo@abhmfg.com  
 Architectural Builders Hardware Mfg., Inc.  
 1222 Ardmore Ave., Itasca, IL 60143  
 630.875.9900; FAX 800.9FAXABH (932.9224)

ABH is a minority  
 owned and operated  
 manufacturing company.

© 2004 ABH Mfg., Inc.  
 printed in USA

1801-00.DWG

# 1801

ISSUED 06-18-04