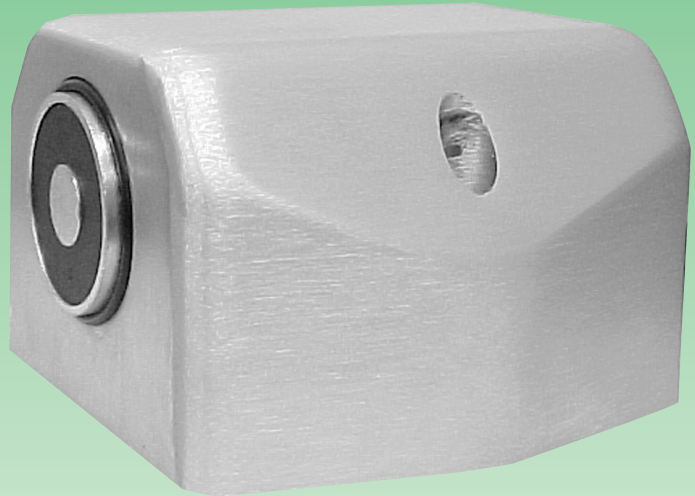
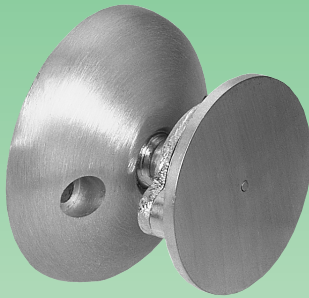
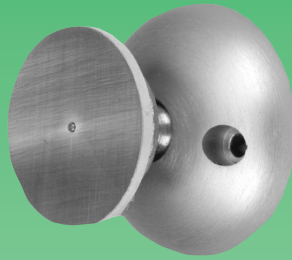


ABH[®] MAGNETIC DOOR HOLDERS

NEW Universal Voltage
12VDC 24VAC/DC 120VAC



ARCHITECTURAL BUILDERS HARDWARE MFG., INC.

Fax Toll Free: 800.9FAXABH (932.9224)
www.abhmfg.com • e-mail: abhinfo@abhmfg.com

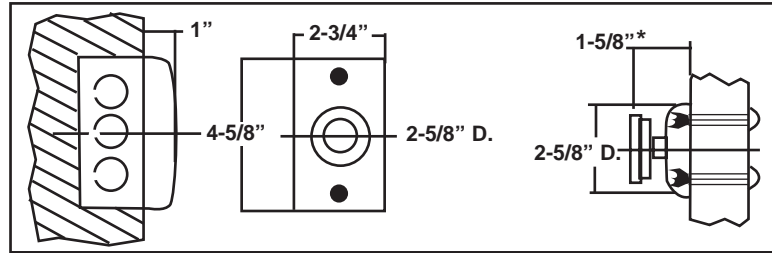
ABH is a certified minority manufacturer.

The newly designed 2000 Series Electro-magnetic Door Holders is now **Tri-Voltage**. Each model (except 2500) can be wired **12V DC, 24V AC/DC or 120V AC**. Units can be used on fire/smoke barrier doors held open until released by a remote switching device. They can also be used to just hold a door open. The armature is thru-bolted to the door for security and can be **provided with any projection required**. When ordering indicate model, total projection, finish and door thickness if other than 1-3/4".

- 30-45 pound holding power
- Underwriters US and Canada Listed
California State Fire Marshal Listed
New York City MEA
ANSI/BHMA 156.14
- Most models available in US28, sprayed finishes and US32D



2100 RECESSED WALL MOUNT

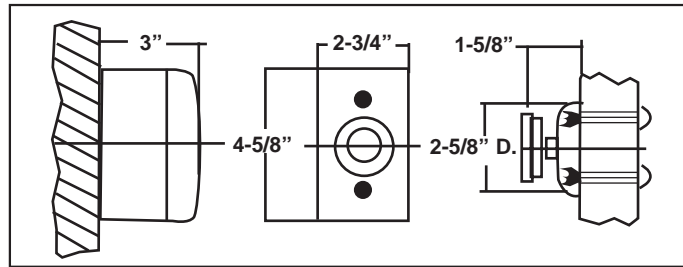


* 2-5/8 with 1" extension

BHMA
C00011



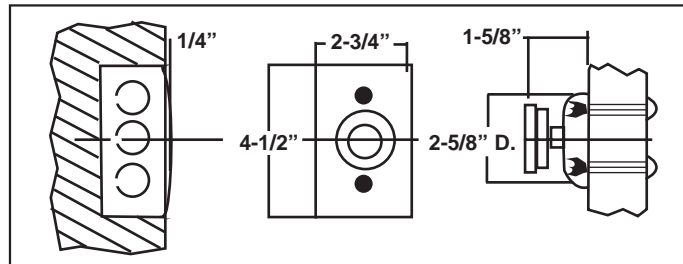
2300 SURFACE WALL MOUNT



BHMA
C00011



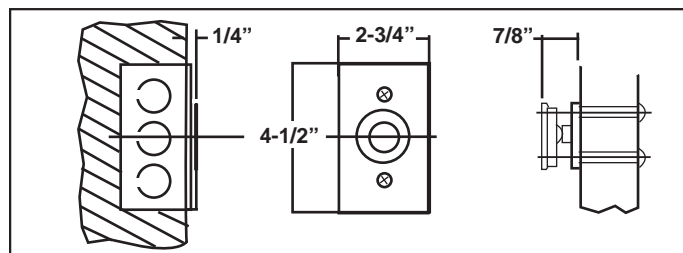
2400 FLUSH WALL MOUNTED



BHMA
C00011



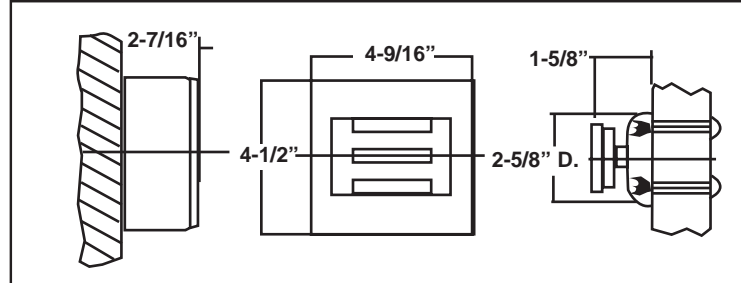
2400L FLUSH WALL MOUNTED



BHMA
C00011

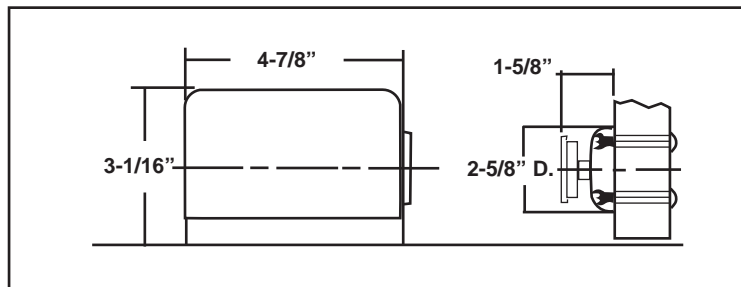
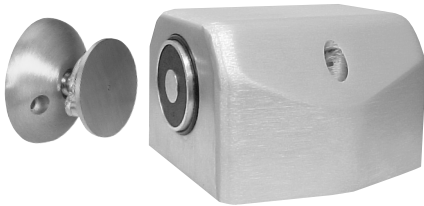
2500 SURFACE WALL MOUNTED

400# Holding Force 2510 - 24AC/DC



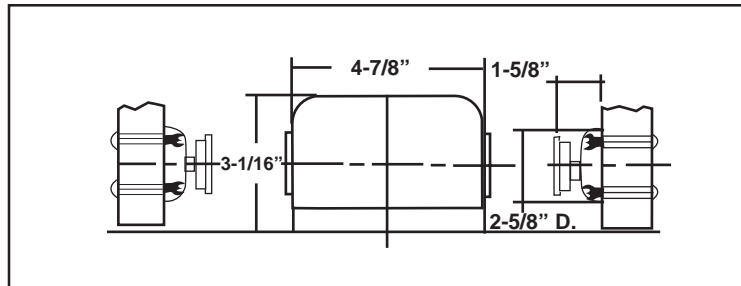
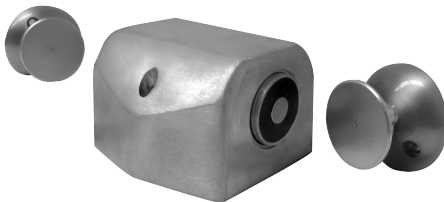
BHMA
C00011

2600 SINGLE FLOOR MOUNT



BHMA
C00031

2700 DOUBLE FLOOR MOUNT



BHMA
C00031

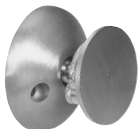
ARMATURE EXTENSIONS



S20020 - Length as requested

Mount door
portion horizontally

20020



20050



1/2"

20075



3/4"

20100



1"

Other extension lengths available on request



120° Swivel Extension

PERFORMANCE DATA			
MODEL	VOLTS	mAmps	VA
2100, 2300	12DC	60	.72
2400, 2600, 2700	24AC	30	.72
2400L	24DC	30	.72
	120AC	30	3.60
2510	24AC/DC	105	1.26

CROSS REFERENCE

FUNCTION	ABH	DORMA	RIXSON	NORTON	YALE	SARGENT	CORBIN RUSSWIN	LCN
RECESSED WALL MOUNTED 2-5/8" TOTAL PROJ	2100	EM-F24120	FM-997	6934	5934	1560	MA 203 MA 243	SEM 7840
RECESSED WALL MOUNTED 3-5/8" TOTAL PROJ	2100* w/1" extension	EM-F24120	FM-998	6933	5933	1560	MA 204 MA 244	SEM 7850
SURFACE WALL MOUNTED 4-5/8" TOTAL PROJ	2300	EM-S24120	FM-996 FM-999	6935	5935	-	-	SEM 7830
FLUSH WALL MOUNTED 1-13/16" TOTAL PROJ	2400	EM-R24120	FM-990	6936	5936	1561	-	-
1-1/8" TOTAL PROJ	2400L	-	FM-989	-	-	-	-	-
400# SURFACE WALL MOUNTED 4-1/16" TOTAL PROJ	2500	-	FM-993	-	-	-	-	-
FLOOR (SINGLE)	2600	EM-FM24120	FM-980	6931	5931	1562	MA 201	SEM 7820
FLOOR (DOUBLE)	2700	EM-DFM24120	FM-981	6932	5932	1563	-	-
SPRAYED FINISHES								
S1 - Aluminum S2 - Brass S3 - Bronze S5 - To match US10B								

*Replaces 2210 & 2220.

All models (except 2510) are universal voltage (12VDC, 24V AC/DC, 120AC).

Architectural Builders Hardware Mfg., Inc.
FAX 800.9FAXABH (932.9224)
 E-mail: abhinfo@abhmfg.com
 Visit our web site at <http://www.abhmfg.com>

ABH is a minority
 owned and operated
 manufacturing company

© 2004 ABH Mfg., Inc.
 Printed in USA 04/04

ABH[®]