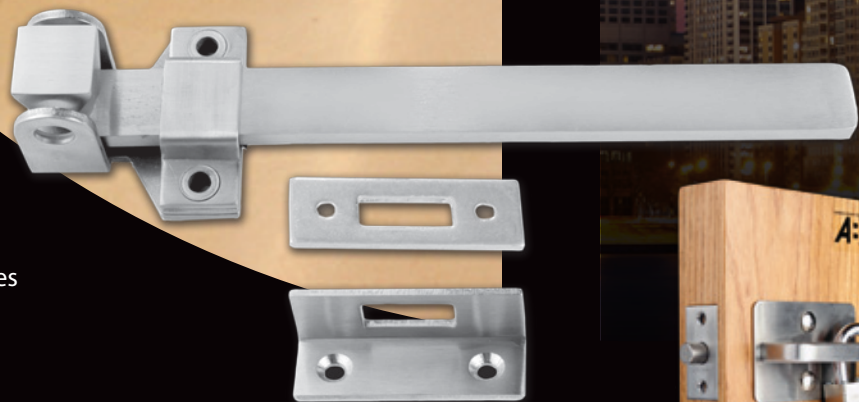




Manufacturing, Inc.



- Overhead Holders & Stops
- Hospital Push/Pull Latches
- Electro-Magnetic Door Holders
- Electrical Power Transfer Products
- Aluminum Continuous Geared Hinges
- Stainless Steel Continuous Pin & Barrel Hinges
- Stainless Steel Edge Guards
- Pivots & Pivot Sets
- Rescue Hardware
- Coordinators, Flush Bolts & Roller Latches



# Slide Bolts, Surface Bolts & Miscellaneous Products

## Surface Bolts Cross Reference Chart

ABH*	Rockwood*	Ives*	DCI*	Hager*	Trimco*	Don Jo*	Cal Royal*
N1815	580-8	SB453-8	1008F	275D	3922	1580	ESBUL50
N1815L	582-8	SBO454-8	1008P	-	3922L	1582	-
N1825	580-12	SB453-12	1012F	276D	3923	1581	ESBUL12
N1825L	582-12	SBO454-12	1012P	-	-	-	-
HD1825	585-12	SB360	-	-	-	-	-
HD1835	585-24	-	-	-	-	-	-

## Door Stops Cross Reference Chart

ABH*	Rockwood*	Ives*	Hager*	Trimco*	Don Jo*
1801	-	AS18	-	-	1420
1802	-	-	-	-	-
1803	466	FS18S	269F	1209	1462
H1803	-	-	-	-	-
EHD1803	465	FS18L	269T	-	1463
1803HO	464	-	-	-	-
1804	-	-	-	-	-

\*Brand names are trademarks or registered trademarks of their respective companies.

## Slide Bolt Padlock Latch

### Standard Features

- Ideal for lockers and temporary locking situations
- Used in numerous military base BEQs nationwide
- Stainless steel assembly
- Non-handed, reversible
- Built-in fail safe on inside ensures the ability to exit even with padlock locked
- Specify T-strike or ASA strike when ordering
- Accommodates up to 3/8" diameter padlock (not provided)
- **Patent pending**

### Models Available

- **1884A** - 2-3/4" backset & ASA Strike (161 Prep)
- **1884** - 2-3/4" backset & T-Strike (161 Prep)
- **1888A** - 2-3/8" backset & ASA Strike (160 Prep)
- **1888** - 2-3/8" backset & T-Strike (160 Prep)

### Options

- **"LO"** - Lock-out option provides an additional hole for a second padlock



*Shown as Locked*



*Shown as Unlocked*



*Shown with "LO" Option*



*T-Strike*

*ASA Strike*



## Surface Bolts

### N1805 Series

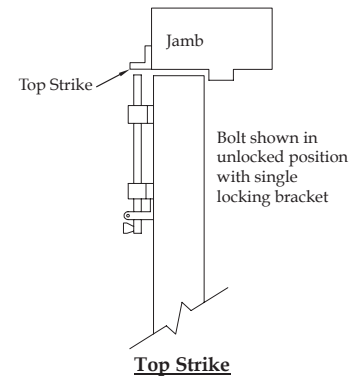
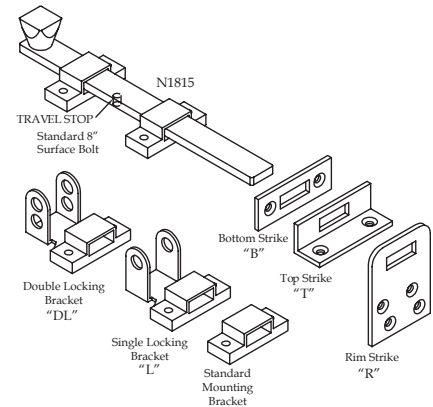
- All stainless steel components – US32D finish
- 1" throw
- Select the correct strike for your application – see drawings on right for reference
  - **B** – Bottom Strike
  - **T** – Top Strike
  - **R** – Rim Strike

### Models

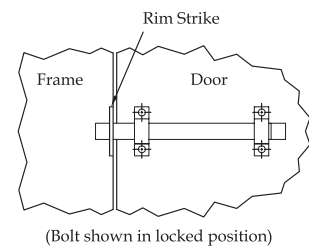
- **N1815** – 8" long bar, 3/16" thick x 3/4" wide
- **N1825** – 12" long bar, 3/16" thick x 3/4" wide

### Options

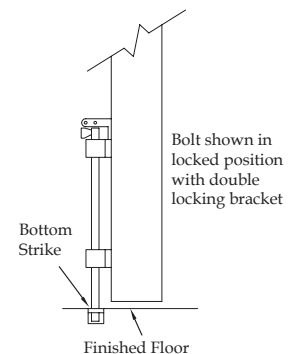
- **L** – Single locking bracket – allows for one 3/8" diameter padlock to lock the surface bolt (padlock not included)
- **DL** – Double locking bracket – allows for two 3/8" diameter padlocks to lock the surface bolt (padlocks not included)
- Custom lengths available – contact factory
- **SEC** – Security fasteners
- **SNB** – Sex bolts



**Top Strike**



**Rim Strike**



**Bottom Strike**

### HD1805 Series

- All stainless steel components – US32D finish
- 1" throw
- Comes with top and bottom strike
- Sex bolts provided standard

### Models

- **HD1825** – 12" long bar, 3/4" thick x 3/4" wide
- **HD1835** – 24" long bar, 3/4" thick x 3/4" wide

### Options

- Custom lengths available – contact factory
- **SEC** – Security fasteners



## 1801 Applied Stop

- For use on single or double doors without a stop
- Mounts on the frame
- Stainless steel base material
- Standard finishes: US32D, US32, US3, US4, US10 and US10B



## 1802 Door Silencer

- For metal doors
- ¼" projection
- Grey color only
- Only sold in quantities of 100
  - Part number 1802 = one bag of (100) silencers



## 1803 Floor Stops

- For use in high abuse areas
- Ideal for correctional facilities, schools and institutions
- Installed in quick set cement



**1803**

Bumper = 2" D x 1-3/8" H  
Rod = 3/8" D x 3" H



**1803HO**

Supplied with  
stainless steel  
door portion and hook



**H1803**

Bumper = 4" D x 1-3/8" H  
Rod = 3/8" D x 3" H



**EHD1803**

Bumper = 3-1/4" D x 2" H  
Rod = 3/8" D x 3" H

## 1804 Pipe Stop & Holder

- All stainless steel components with rubber bumper
- Rubber bumper on door portion hits the pipe when used as a stop
- Door can be held open to floor portion with stainless steel hook
- Floor portion installed in quick set cement



## Vertical Rod Protector & Latch Bolt Cover

### Standard Features

- Assist in handicap conformance
- Use in hospitals and schools, etc.
- 18 Ga. 304 Stainless Steel
- US32D is standard finish - Contact factory for other finishes
- Installs with #6 x 3/4" screws directly into the door
- Install on any type of metal, plastic, or wood door regardless of thickness
- Vertical rod cover
  - 3-1/8" wide x 24", 36" or 48" high
  - Special lengths available
  - 1-1/16" projection from door
- Latch bolt cover
  - 7" wide x 10" high
  - 2-1/8" projection from door

### How to Order

- **1811** - (2) 24" Vertical Rod Covers,  
(1) RH & (1) LH Latch Bolt Cover
- **1811-36** - (2) 36" Vertical Rod Covers,  
(1) RH & (1) LH Latch Bolt Cover
- **1811-48** - (2) 48" Vertical Rod Covers,  
(1) RH & (1) LH Latch Bolt Cover
- **1812** - (1) 24" Vertical Rod Cover &  
(1) RH Latch Bolt Cover
- **1813** - (1) 24" Vertical Rod Cover &  
(1) LH Latch Bolt Cover
  
- **1812-1-24** - 24" Vertical Rod Protector
- **1812-1-36** - 36" Vertical Rod Protector
- **1812-1-48** - 48" Vertical Rod Protector
  
- **1812-2** - RH Latch Bolt Cover
- **1812-3** - LH Latch Bolt Cover

### Options

- **SEC** - Security fasteners
- Special height vertical rod covers - specify desired length (48" max)



1811 (pair of doors)

